



Snowmobile NEWS



WWW.OREGONSNOW.ORG FREE PUBLICATION

MARCH 2025

OFFICIAL PUBLICATION OF THE OREGON STATE SNOWMOBILE ASSOCIATION



Celebrate the Women
of OSSA in March



OSSA Dealer Of The
Year 2023-2024 Season

41 Years in business.



**Thanks for all your support,
You have made us what we are today!**



MT. HOOD POLARIS

27850 SE HWY 212 BORING, OR 97009
Tuesday - Friday 9am to 6pm / Saturday 9am to 5pm

503-663-3544

www.mthoodpolaris.com

CASCADE MOTORSPORTS

BEND, OREGON

WEBSITE



33 REMAINING IN STOCK! DON'T WAIT!

**SLED
BLOWOUT!**

THE BEST DEALS OF WINTER ARE HERE!

**RMK STARTING
AT \$11,499
OR 0% APR**

SNOWCHECK
HURRY ENDS 3.28.2025



POLARIS

3 YEAR
WARRANTY

OR

1.99%
APR
FOR 36 MONTHS

OR

\$1,500 CREDIT
ON PARTS, GEAR & ACCESSORIES

+ UP TO \$250 OFF ACCESSORIES

BUILD YOURS

CALL TODAY (541) 389-0088

POLARIS

KTM

TIMBERSLED

Paulina Lake Lodge – 15% off food

(541) 536-2240

Open Friday – Sunday beginning December 26, 2024

If you have a group of 10 or more riding during the week, contact the lodge 2-3 days prior to ride and they will open for you for lunch.

Moto Aspirations – 10% off parts & 15% off service

16605 Assembly Way Ste 101

La Pine, OR. 97739

(541) 536-1077

Cascade Motorsports - 10% off parts

20445 Cady Way

Bend, OR. 97701

(541) 389-0088

Pro Caliber Motorsports– 10% off parts & service

3500 N Highway 97

Bend, OR. 97703

(541) 275-6553

Elk Lake Resort– 15% off food

(541) 480-7378

Central Oregon Adventures – 10% off groups

(541) 593-0339

Crater Lake Resort & Store -- 20% discount for resort reservations to anyone who mentions our ad in the OSSA News.

This discount is good through May, 2025

541-381-2329

50711 Crater Lake Highway, Chiloquin, Oregon 97626

Hours of Operation:

Mon - Wed Noon to 5pm

Thurs - Sun 10am to 5pm

Elk Lake Resort– 15% off food

(541) 480-7378

Central Oregon Adventures – 10% off groups

(541) 593-0339

Show your club or OSSA membership card to receive these discounts.



JOIN OSSA TODAY

membership signup link. <https://www.oregonsnow.org/become-a-member/>

ODOT has cut our budget at OSSA (Oregon State Snowmobile Association) by 30% so we had no choice other than reducing all the club's grooming funds by the same, there is strength in numbers and your support is greatly needed and appreciated.

The other groomers and I are happy to groom and open trails for all users, cross-country skiers benefit from the grooming as do snowmobilers, and here on the Malheur NF we are very fortunate to have nearly zero user conflicts.

Our local club membership is down from past years and has never been supported to the level it could be. I know there are a lot of snowmobilers, as well as X-country skiers who are not members but benefit from our efforts.

Please hit the QR code below and renew your membership or join for the first time! Membership is only \$45.00 per year.

There is a lot of effort that goes on behind the scenes to make these winter trails work, your support is greatly appreciated.

Cheers & Have a Great Season

Dave
OSSA Director of Grooming Dist. 6





504 N.W. 1ST ENTERPRISE, OR 97828
 (541) 426-3491 (888)603-1273
 OUTLAW@EONI.COM

YAMAHA
 HONDA
 ARCTIC CAT
 KAWASAKI
 KTM

Corporate Graphics & Printing ^{INC}

Serving West Coast Business and Industry for 35 years

(503) 936-9592 Customer Service
 corporate.graphics.printing@gmail.com

POLARIS

Morrow County Grain Growers
 350 Main Street
 P.O. Box 367
 Lexington, OR 97839

Ralph Klock
 Polaris Sales and Finance
 Cell: 503-819-6126
 541-989-8221
 1-800-452-7396
 ralphk@mcgg.net

ski-doo®

PRO CALIBER BEND
 YOUR LOCAL
 POWERSPORTS
 DEALER

PRO CALIBER
 www.ProCaliberBend.com

3500 N HWY 97 | BEND, OR | (514) 641-5151

Dan's
 MotorSports Outlet
 "Where Your Hobby Is Our Passion"

(503) 385-8108 1810 Lana Ave NE, Salem, OR 97301
www.dansmotorsports.com

ARCTIC CAT®

858

ARCTIC CAT
 TEXTRON
 Beta
 E
 PARTS WPS
 FXR
 MOTOR WEST
 ES
 KAWASAKI
 NAYO
 509
 Klim



2025 Mt. Bailey \$3000 Poker Run

Hello everyone,
Greg here from the Rogue Snowmobilers.

The 2025 Mt. Bailey \$3000 Poker Run was a resounding success! We were fortunate to enjoy fantastic weather and ideal snow conditions, making the event all the more enjoyable for all participants.

We extend our heartfelt gratitude to all our sponsors who contributed both financially and with door prizes. Their generous support ensured that most attendees walked away as winners, enhancing the overall experience for everyone involved.

A special thank you goes out to Diamond Lake, whose support was invaluable. We also want to acknowledge the tireless efforts of our groomers and the dedicated Rogue Snowmobiler volunteers, without whom this event would not have been possible.

Thank you to all participants and supporters for making the 2025 Mt. Bailey \$3000 Poker Run an unforgettable event!

I regretfully announce 2025 will be the last Mt. Bailey \$3000. The event has become the premier snowmobiling event in the NW over the last decade or so. Due to its success and the club wanting to give more back to attendees, we are opting to change the event next year.

Happy to announce the 2026 Mt. Bailey \$5000 Poker Run! Happening at Diamond Lake on February 14th 2026!

Riding Experience with the LaPine Snow Dodgers

The multi-club gathering held on March 1st at Paulina was a delightful experience, bringing together Roger's LaPine Dodgers and Greg's Rogue Snowmobilers. This event was a testament to the camaraderie and shared passion for snowmobiling between the two clubs. The day was filled with scenic sightseeing, allowing participants to immerse themselves in the breathtaking winter landscapes of the area.

One of the highlights of the day was the delightful lunch provided by the Paulina Lake Lodge. The warm and inviting atmosphere of the lodge, coupled with delicious food, offered a perfect respite from the cold and an opportunity for everyone to socialize and share stories of their adventures.

Those who couldn't attend missed out on a wonderful day on the snow, marked by fantastic weather and smiles all around. The clear skies and crisp air created ideal conditions for riding, enhancing the overall experience and ensuring that everyone had a memorable time. The event underscored the strong sense of community and the joy that comes from spending time outdoors, exploring nature, and enjoying the thrill of snowmobiling.

Thanks!
Greg Gulrich
President – Rogue Snowmobilers

Thank you to all our sponsors!





- Representation
- Education
- Grooming
- Community Service
- Information
- Socializing

The Rogue Snowmobilers, located in the Rogue Valley, are the largest snowmobile club in the state of Oregon.

We are a non-profit snowmobile club responsible for grooming in the area just west of Crater Lake National Park in an area known as Thousand Springs Snow Park.

Our club **maintains over 150 miles of trails**, most of which are groomed weekly.

We want to ensure not only do snowmobilers have access to these parts of the woods, but anyone.

www.roguesnowmobilers.com
Oregon's Largest Snowmobile Club



ROUGE SNOWMOBILERS SCHEDULE OF EVENTS 2025

March	2025	
1-2	No Host Ride	10-Mile Snow Park
4	General Club Meeting, & Pie Auction, 6:00pm	IOOF Central Point
TBA	Cascade Ladies Ride	TBA
15-16	Snow Drifters & Rogue Play Day	Annie Creek Sno-park
TBA	District 5 Playday	TBA
11	Board Meeting 6:00 pm	Teams
29	Last Hurrah/ Winter Banquet	Claude Lewis Sno-park
April	2025	
1	General Club Meeting 6:00 pm	IOOF Central Point
5	No Host	3-Lakes Sno-Park
8	Board Meeting 6:00 pm	Teams
TBD	Candlelighters Ride	1000 Springs Sno-park



Ready to take the next step?

You don't need to attend club functions in order to join our club. Even for those of you that don't care much about group rides/functions, your membership is the main line of defense of keeping your riding area open and accessible. Our club officers and board members work tirelessly to protect your riding areas. In some cases, we are able to restore riding rights in closed areas for your enjoyment. Without your membership, we can't do it. Join our team to get involved today!

<https://roguesnowmobilers.com/membership>





CC Riders at the Mt. Bailey Poker Run





CC Riders at the Mt. Bailey Poker Run



View of Mt. Thielsen from Diamond Lake, OR



OSSA CLUB WEB SITES

www.BurntRiverSnowmobileClub.com
www.CascadeConnection.org
www.ChiloquinRidgeRiders.com
www.columbiagorgepowersledders.com
www.FourCornersSnowmobileClub.com
www.GrantCountySnowballers.org
www.HarneyCountySnowmobileClub.com
www.HiDesertStormTroopers.com
www.kbsnowdrifters.org
www.lapinedodgerssnow.org
www.snodrifters.com
www.mcsnowbusters.wixsite.com/website

www.MtHoodSnowmobileClub.org
www.mtjefferson.org
www.NorthSantiamSnowmobileClub.com
www.OchocoSnowSports.com
www.PanhandleSnowmobileClub.com
www.roguesnowmobilers.com
www.sisterssnogofers.org
www.SumpterValleySnowmobileClub.com
www.tollgatetrailfinders.org
www.walkerrimriders.com
www.TwoRiversActivityClub.com
www.WallowaCountyGamblers.com

SNOWMOBILERS CARE ABOUT THE ENVIRONMENT





Officers & Directors

President

Dennis Jordan
(541) 821-8570

Email

Vice President

TJ Reilly
(503) 804-2075

Email

Past President

Email

Executive Director

Lisa Mahoney
PO Box 6255
Bend, OR 97708
(541) 797-8880

Email

Assistant Executive Director / Membership

Lisa Burt
(541) 480-0479

Email

Membership Director

District 1

- Mt Hood Snowmobile Club
- Columbia Gorge Power Sledders

Bruce Harblson
(512) 583-2905

Email

Membership Director

District 2

- Mt Jefferson Snowmobile Club
- North Santiam Snowmobile Club

Jim Brister
(503) 559-8391

Email

Grooming Director

Districts 1 & 2

- Mt Hood Snowmobile Club
- Columbia Gorge Power Sledders
- Mt Jefferson Snowmobile Club
- North Santiam Snowmobile Club

Anthony Kuenzi
(503) 891-0351

Email

Membership Director

District 4

- Ochoco Snow Sports
- La Pine Lodgepole Dodgers
- Walker Rim Riders
- Sisters Sno-Go-Fers
- Moon Country Snowbusters
- Two Rivers Activity Club

Roger Ellis
(503) 475-8095

Email

Grooming Director

District 4

- Ochoco Snow Sports
- La Pine Lodgepole Dodgers
- Walker Rim Riders
- Sisters Sno-Go-Fers
- Moon Country Snowbusters
- Two Rivers Activity Club

Richard Galman
(541) 480-1908

Email

Membership Director

District 5

- Klamath Basin Snowdrifters
- Rogue Snowmobilers
- Chiloquin Ridge Riders
- Cascade Connection
- Hi Desert Storm Troopers

Email

Grooming Director

District 5

- Klamath Basin Snowdrifters
- Rogue Snowmobilers
- Chiloquin Ridge Riders
- Cascade Connection
- Hi Desert Storm Troopers

Dan Riblett
(541) 892-0182

Email

Membership Director

District 6

- Harney County Snowmobile Club
- Grant County Snowbillers
- Burnt River Snowmobile Club
- Sumpter Valley Snowmobilers

Tim Holly
(541) 620-0408

Email

Grooming Director

District 6

- Harney County Snowmobile Club
- Grant County Snowbillers
- Burnt River Snowmobile Club
- Sumpter Valley Snowmobilers

Dave Hannibal
Cell (511) 820-0826

Email

Membership Director

District 7

- La Grande Sno-Drifters
- Panhandle Snowmobile Club
- Willowa County Gamblers

Duane Miles
(541) 540-5151

Email

Grooming Director

District 7 & 8

- La Grande Sno-Drifters
- Panhandle Snowmobile Club
- Willowa County Gamblers
- Four Corners Snowmobile Club
- Tollgate Trailfinders

Denny Farwell
(541) 540-1563

Email

Membership Director

District 8

- Four Corners Snowmobile Club
- Tollgate Trailfinders

Jeff Wagner
(509) 386-2425

Email

Avalanche Safety Coordinator

Safety

Email

Public Lands

John Vogel
Cell (541) 490-8114
Email

Oregon Snowmobile News

Gordon Scott
PO Box 18964
Portland, OR 97292
(503) 936-9592

Email

Webmaster

Kirk Snyder
818 SW 3rd Ave #144
Portland, OR 97204
(503) 702-2149

Email

<https://www.oregonsnow.org/become-a-member/>

Become a Member - Oregon State Snowmobile Association (oregonsnow.org)

WWW.OREGONSNOW.ORG

Visit OregonSnow.org is Oregon State Snowmobile Association's Official Website.





Assure The Future of Snowmobiling

Become a member of your local Snowmobile club.



SNOWMOBILERS.ORG

Winter Adventures Await at Diamond Lake

As the landscape changes and the lake freezes over, there is so much beauty to explore at Diamond Lake.



From simple, rustic quarters to a spacious, modern retreat cabin. Plan your next getaway.

www.diamondlake.net



SNOWMOBILE RENTALS



SNOW TUBING



ICE FISHING

Experience
DIAMOND LAKE



Motel Rooms - Cabins - Cafe
Mt. Bailey Sports Bar and Grill
South Shore Pizza Parlor - Store
Marina - Gas Station w/ Non Ethanol Fuel
Post Office - Laundromat
Diamond Room Lounge - Diamond Lake RV Park

Snow Cat Tours to Crater Lake National Park
Cat Ski Mt. Bailey - Ice Fishing
Cross Country Ski and Snowshoe Rentals
Snowmobile Rentals - Snow Tubing



Fishing Boats - Peddle Boats - Kayaks - Canoes - Patio Boats - Paddle Boards - Mountain Bikes

Mountain Bike Trails - Horseback Rides
Hunting - Fishing - Sight Seeing - Hiking
Boating - Camping - ATV Trails
and so much more...

Diamond Lake Resort is located at the summit of the Southern Oregon Cascade Mountains. On Hwy 138 just 5 miles North of Crater Lake National Park. We are the hub of 300 miles of groomed Snowmobile trails and the only snowmobile access to Crater Lake National Park.

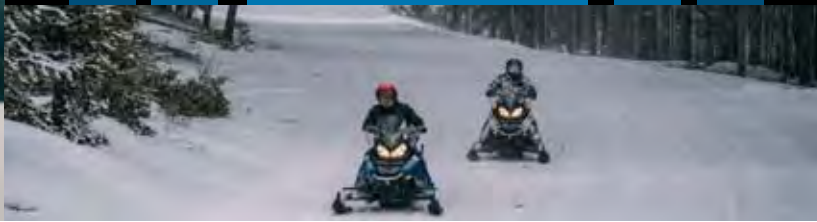
541.793.3333 | www.diamondlake.net



Schedule Your Next Event At



Oregon's Gem Of The Cascades



WINTER WONDERLAND



Winter Rates for Cabin & RV Sites Everyday!

- **Snowmobiling • X Country Skiing • Snowshoeing • Ice Fishing**
- **Resort Open Thursday Through Monday • New Menus & Offerings this Winter**

ABOUT 40 MILES FROM KLAMATH FALLS, ASHLAND AND MEDFORD

TOLL FREE 866-201-4194 WWW.LAKEOFTHEWOODSRESORT.COM



WINTER LIVE MUSIC

EVERY SATURDAY IN THE LAKE HOUSE
RESTAURANT FROM 5PM - 7PM



12/31 ~ MARTY COMBS TRIO IN THE LOUNGE 6PM - 9PM

1/4 ~ DAVE BRENDLINGER

1/11 ~ BILL SCHOLER

1/18 ~ MARTY COMBS

2/1 ~ DEVON HACKETT

2/8 ~ TIM & DENNIS MITCHELL

2/15 ~ THE MERCY DUO

2/22 ~ BILL SCHOLER

3/1 ~ DAVE BRENDLINGER

3/8 ~ DEVON HACKETT

3/15 ~ TIM & DENNIS MITCHELL

3/22 ~ MARTY COMBS

3/29 ~ COOL DISPOSTION



CALL 5419498300
FOR RESERVATIONS

Closed for Winter Season Sunday March 16th



www.paulinalakelodge.com

Re-Opening for Fishing May 14th

Paulina Lake Lodge

22440 Paulina Lake Road
La Pine, OR 97739
www.paulinalakelodge.com
541-536-2240
paulinalakelodge@outlook.com

The Elk Lake Resort advertisement features a scenic background image of a person in a red jacket standing on a snowy mountain slope, looking out over a valley. The logo for Elk Lake Resort is positioned in the upper left, showing a stylized mountain peak, a sun, and a tree. The text "ELK LAKE RESORT BEND, OR" is to the right of the logo. The website "www.elklakeresort.net" is centered below the logo. At the bottom, the closing and reopening dates are listed: "Closing for the Winter Season Sunday March 30th And Reopen Memorial Day Weekend May 23rd."/>

www.elklakeresort.net

**Closing for the Winter Season Sunday March 30th
And Reopen Memorial Day Weekend May 23rd.**



Why should I register my snowmobile?

Did you know that registering your snowmobile helps fund the groomed snowmobile trails in Oregon?

The Oregon State Snowmobile Association (OSSA) receives money from the Oregon Department of Transportation (ODOT). The money comes from the state gas tax. It is put into a fund managed by ODOT. OSSA has a contract with ODOT to facilitate trail maintenance which includes grooming the many miles of snowmobile trails in the state of Oregon. The percentage is based solely off of how many snowmobiles are registered in the state of Oregon. The more snowmobiles that are registered the more money OSSA gets to groom the trails. So, if you enjoy riding your snowmobile on the many miles of groomed trails in the state of Oregon. Please register all of your snowmobiles, whether they run or not.

Registration for a snowmobile is only \$5 per year for 2 years.

A fine for no registration is \$115.

Please register your snowmobile and help keep our snowmobile trails groomed for everyone to enjoy.



Thank you
OSSA

Groomed vs Ungroomed



KNOW THE RISKS AND BE PREPARED



Avalanche Safety Guidelines

GET THE GEAR: Ensure everyone has an avalanche transceiver, shovel, and probe on their person and knows how to use them.

GET THE TRAINING: Take an avalanche course.

GET THE FORECAST: Make a riding plan based on the current avalanche and weather forecast.

GET THE PICTURE: If you see recent avalanche activity unstable snow exists. Riding on or underneath steep slopes can be dangerous.

GET OUT OF HARMS WAY: One at a time on all avalanche slopes. Don't go to help your stuck friend. Don't group up in runout zones.



United States: www.avalanche.org

Canada: www.avalanche.ca

HELP IMPROVE AVALANCHE SAFETY

5 Minute Survey for Motorized Users

Eastern Oregon University is conducting a survey to better understand avalanche safety preparedness among motorized backcountry users. The survey will help us learn more why about who is purchasing and practicing with avalanche rescue gear (beacon, probe, shovel) and participating in avalanche education —and why some riders are not.

The survey is confidential and anonymous.

Your feedback is invaluable in improving avalanche education and awareness.
Please take a moment to share your experience and help us make a difference:

https://eoustmhs.qualtrics.com/jfe/form/SV_3L8QKAuZzcxJBL0

or use the following QR code:



Thanks for your time and for being a part of this important effort!

HAVE FUN ON YOUR RUN

BUT DON'T
DRINK 'TIL
YOU'RE DONE

This message brought to you
by the American Council of
Snowmobile Associations
www.snowmobilers.org

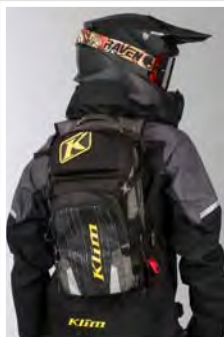


Snowmobile Safety

For more safety tips go to: www.snowmobile-ed.com
Avalanche Training: www.nwac.us

Did you know that you must have a valid driver's license or snowmobile safety card to operate a snowmobile in Oregon? OSSA offers snowmobile safety classes for all ages, even kids as young as 7 years old. See: www.oregonsnow.org/contact/safety-training/ Snowmobile safety starts before you go up to the mountain.

Are you totally prepared? Here's a partial list of items to consider carrying: Shovel, hand saw, water, protein bar, 2 way radio, SPOT unit, cell phone with spare battery, maps, first aid kit, matches, fire starter, extra socks, extra gloves, emergency blanket, whistle, tampons, compass, mirror, zip ties, duct tape, Leatherman tool pliers.



Tow Strap

Snowbunje allows you to tow a snowmobile without 2 riders (Available at most snowmobile dealers).



Backcountry must have items:

Shovel, Avalanche Probe, Avalanche Beacon, Avalanche Backpack



Trail Conditions/Grooming Reports

<https://members.oregonsnow.org/grooming>



Be sure to always check avalanche conditions before you ride!

The Oregon State Snowmobile Association provides snowmobile trail grooming in the state of Oregon with a 100% volunteer effort. Our volunteers are out on the snow almost every day grooming the trails to provide a safe and enjoyable experience for snowmobilers, snow shoeing, cross country skiing and other recreationalists.

A typical volunteer grooming day begins with arriving at the grooming shelter before sunrise to get the equipment ready for the day. Not only do our volunteers groom the trails but we also remove fallen trees and obstacles from trails. In addition we provide search and rescue assistance in emergencies. It's not uncommon for our volunteers to put in a 10 or 12 hour day grooming. It takes many many hours of training to become a primary groomer. Our groomers are trained in first aid, CPR, and equipment safety and maintenance.

Be sure to show your appreciation by joining OSSA and your local snowmobile club today!





Wallowa Avalanche Center

PO Box 324
Joseph, Oregon 97846

(503) 329-6603

Info@wallowaavalanchecenter.org

<https://wallowaavalanchecenter.org/classes-events/>

www.wallowaavalanchecenter.org

About Us

The Mission of the Wallowa Avalanche Center is to keep winter backcountry travelers safe in the mountains of Northeast Oregon through education, avalanche advisories, mountain weather information and observations.

We begin bi-weekly avalanche forecasts in the fall after enough snow accumulates in the mountains for on-snow travel in the backcountry and continue them until early April. We also offer a variety of classroom and field based educational programs, including instruction specifically aimed towards youth, backcountry skiers, snowmobilers, and professionals.



Victor McNeil, Director

victor@wallowaavalanchecenter.org

Victor began spending winters in the Wallowas in 2009, and has worked as a professional ski and mountain guide for the past 12 years. As a native of Oregon, Victor graduated from Southern Oregon University, with a degree in Small Business Management. During the spring and summer, Victor guides in Alaska, Washington and Peru on high altitude peaks and technical summits. As an American Mountain Guide, Victor has achieved the highest level of certification in Mountain Guiding, through the American Mountain Guides Association. Victor has achieved a Level 3 Avalanche Certification through the American Avalanche Institute. La Grande, OR is home for Victor with his wife and 2 Golden Retrievers. When not out backcountry skiing, Victor is working on his snowmobile skills and how to develop better avalanche education for motorized backcountry users.



Rex Stanley, Development Director

Rex hails from the small town of Baggs, WY, where he grew up snowmobiling with his family and learning to snowboard on the slopes of Steamboat Springs, CO. He attended Boise State University where he graduated with a degree in Business Management. Currently living in La Grande, OR, he is learning to explore the backcountry of the Wallowas and Elkhorns via his split-board and snowmobile. He hopes to increase the reach that the WAC has for all backcountry users, and build upon the growing backcountry culture here in Northeast Oregon. When the snow melts, he can be found hiking and riding his bike with his pup and wife. He also serves as board member of the local mountain biking chapter, Blue Mountain Singletrack Trails Club.



Michael Hatch, Avalanche Specialist

hatch@wallowaavalanchecenter.org

Michael Hatch grew up in Boise, ID and earned a B.S. in Resource Conservation/Wilderness Studies from the University of Montana, and an M.S. in Education from Eastern Oregon University. Currently Hatch is the director of the Outdoor Adventure Program and instructor of Health and Human Performance for EOU. Hatch worked for over a decade as a backcountry ski guide in the Sawtooths and Wallowas. One of Hatch's biggest passions is teaching avalanche courses, as an AIARE Course Leader for Level 1 and 2 classes. Hatch is a professional member of the American Avalanche Association and is also a board member for the WAC.



Nick Burks, Avalanche Specialist

Nick began skiing before he can remember. He started working on the Mt. Hood Meadows Pro Patrol in 2005 and became the Snow Safety Supervisor there in 2014. Nick spent the summers of 2016 and 2017 working as a ski area avalanche forecaster in the Cragburn mountains of New Zealand. He has traveled to ski in Chile, Argentina and Japan.



Caleb Merrill, Avalanche Specialist

Caleb Merrill grew up on the coast of Maine, eventually venturing west in search of more snowfall and vertical relief. He began his career in the snow and avalanche arena in 2006 as a ski patroller at Solitude in the Wasatch mountains of Utah. Early morning avalanche mitigation routes with explosives along exposed ridgelines are amongst the favored memories of this job. Caleb became a guide with Ruby Mountain Helicopter Skiing in 2014, and has enjoyed exploring the nooks and crannies of this hidden gem of a range while learning amongst some of the best guides in the industry. He is the creator, host, and producer of *The Avalanche Hour* Podcast - a side project aimed at creating more dialogue amongst the snow and avalanche community. Caleb is actively progressing through the AMGA ski guide program in hopes of certification. He completed an AIARE level 3 course in 2014, and is currently an AIARE course instructor. He looks forward to a winter in the Wallowas - getting to know the terrain, snowpack, and people.



Kelly McNeil, Avalanche Specialist

Kelly grew up in Eastern Wyoming where she started exploring the Big Horn mountains on snowmobiles and dirt bikes at an early age. During that time, she also learned to ski in the South Dakota Black Hills. Kelly moved to Montana for her undergrad and was introduced to backcountry skiing. After many years of school and earning her Ph.D. from Oregon State University in 2009, she began a career as a professor at Eastern Oregon University, where much of her work focuses on public health and research in outdoor physical activity including the study of behavior in outdoor environments. Recently Kelly has started to assess how public health theories and practices can be utilized for avalanche education and forecasting. Since 2017, Kelly has helped organize and run operations at the Wallowa Avalanche Center, including teaching avalanche courses for both motorized and non-motorized users. In 2019 Kelly took her Professional Level 1 Avalanche Course and will be taking her Professional Level 2 Course this February. Last winter Kelly completed her AIARE Instructor Training Course at Togwotee, WY on a snowmobile. Kelly is a Professional Member of the American Avalanche Association, a guest host on the *Avalanche Hour* Podcast, and has also completed her AMGA Alpine Skills Course.

WHEN NIGHT RIDING, SLOW DOWN



Expect the unexpected

A MESSAGE BROUGHT TO YOU BY



Snowmobilers Care
About Our Environment



Keeping Nature
Beautiful

www.snowmobile.org



Happy March from Grant County!

We've had quite a few club members out enjoying the plethora of snow we've been blessed with! We also had a great turnout for our club ride and a few more members attended Sumpter's vintage races for the second weekend of fun over there. Our groomers have been out some, but not on a steady basis due to the fact we are almost to our season max of allotted miles. Should the snow hold up there may be another race in March in Sumpter. Please follow us on fb under GCSC for updates! Looks like our season may be winding down but there is still a lot of snow up high for some great spring riding! Get outside and enjoy it!!!



Photo credits and content.

Groomer operator Dave Hannibal and photographer Cindy Broadwater at Antelope Lookout.

Club ride (pictures by Jay Carniglia)

Club President Garrett Carniglia out enjoying the powder on the club ride.

The Holly family out enjoying our Grant County snow!

Photo credit: Stephanie Holly.

A few of the club members competed at Sumpter Vintage ovals again.







WALKER RIM RIDERS

Crescent Lake, Oregon

EST. 1972

Representing the Eugene, Springfield, and Crescent Lake Area

President: Riley Spence

Email

Vice President: Doug Wardell

Email

Secretary:

Treasurer: Tracy Strode

Email

Grooming Co-Chairman: Cole Stuller

Email

Grooming Co-Chairman: Tyler Hovelsrud

Email

Mailing Address:

PO Box 1090

Crescent Lake OR 97733

Facebook Page

Club Map

March 2025

2 - Candlelighter's Snow Day - Junction Sno-Park - 9:00AM

8 - Timpanogas Lake Ride - Junction Sno-Park - 9:00AM

8 - Club Meeting - Fire Hall - 6:30PM

April 2025

12 - Trail/Work Party - Junction Sno-Park - 9:00AM

12 - General/Voting Meeting - Junction Sno-Park - 2:00PM

May 2025

10 - Work Party to Stain Junction Sno-Park Warming Shelter - 9:00AM

10 - Club Meeting - Fire Hall - 6:30PM

June 2025

14 - Trail/Work Party - Junction Sno-Park - 9:00AM

14 - Club Meeting - Fire Hall - 6:30PM

July 2025

12 - Diamond Lake Dirt Ride - Junction Sno-Park - 9:00AM

12 - Club Meeting - Fire Hall - 6:30PM

August 2025

9 - Kayak Float - Junction Sno-Park - 9:00AM

President

Vice President

Secretary

Treasurer

Board Member Position #1

Board Member Position #2

Board Member Position #3

Nick Bottger

Doug Wardell

Tracy Strode

Tracy Strode

Mike Strode

Diane Wardell

Cole Stuller





OSSA President Dennis Jordan

OSSA Vice President TJ Reilly

Are you a member of ACSA?

The American Council of Snowmobile Association is your National Voice.

Individual membership is only \$15 per year.

Join OSSA President Dennis Jordan and OSSA Vice President TJ Reilly by joining today!

Benefits of joining ACSA
(The American Council of Snowmobile Associations)

Click here to view:

<https://www.snowmobilers.org/ACSA-membership-levels.aspx>





The Mt Hood Snowmobile club was invited to ride in Tollgate Oregon with the Tollgate Trailfinders on Saturday March 1st. The weather was great and the views were spectacular. Tollgate definitely has a lot more snow than Mt Hood.





OSSA Club of the Year 2025

Find us on [Facebook](https://www.facebook.com/sumptersnowmobileclub) (<https://www.facebook.com/sumptersnowmobileclub>)

See upcoming events for a disclaimer

UPCOMING EVENTS

2024-2025 SNOWMOBILE SEASON

Regular Monthly Meetings (subject to change)

Our meetings are every 3rd Thursdays of each month starting in September. The Club will have our potluck starting at 6:00 PM and our meeting will start at 7:00 PM in case you just want to attend the meeting. Please be sure to bring your own table service and drinks to potluck-meetings. Dates and times are subject to change so please check the schedule each month.

These are the dates for our next meetings.

- * Thursday March 20, 2025
- * Thursday April 17, 2025

We had great weather and a great turnout for this year's 2025 Poker Run. Not only did we have our usual walk about Poker Run, but we had 4 more stations out on the trail for the snowmobilers that went riding. To be eligible for the Trial purse of \$500, the riders had to go to all 4 stations and pick up the other 3 from one of the 7 stations in town. They were also eligible for our usual \$3000 purse. Thank you to all the participants that helped make this a success. A BIG thankyou for all the donations from our Merchants from Sumpter, Baker City, LaGrande, Haines, John Day, Medford, Ontario, Hermiston and Vale Oregon and Caldwell, Meridian, and Boise Idaho. And thank you to all the volunteers that helped with all the stations and helping to put this on. Hope to see you next year.

Winners of the member only drawing went to Vickie Christensen \$150, 50/50 Raffle went to Ty Applegate \$642.50.

Our donations from our Poker Run this year will be going to **Best Friends of Baker City** and to **SAR (Search and Rescue of Baker County)**. Since it was almost as good as last year's tally the club members at our Feb. meeting voted to give \$1000 to each Charity for a total of \$2000.

The second set of Vintage Races will be on Saturday Feb. 22nd and Sunday 23rd, 2025 at fair Grounds in Sumpter. Food will be provided by Stage Stop and The Sumpter Valley Volunteers.

See you at the meetings or on the trails.





POKER RUN REGISTRATION

Sumpter Valley Blue Mountain Snowmobile Club




POKER RUN STATIONS

Sumpter Valley Blue Mountain Snowmobile Club



Blue Springs station with Dave Mills, Glen and Gail Iholt



Poker Run station at Thje Stage Stop



Down the street at Poker Run 2025



Poker Run station at The Gold Post



Poker Run Station at The Outlaws



People walking to The Stockade



Poker Run Station at the Library



Poker Run Station at the Stage Stop



Poker Run station at The Gold Post



Poker Run station at The Nugget



Poker Run Station at The Stockade

POKER RUN AWARDS

Sumpter Valley Blue Mountain Snowmobile Club



Photos provided by Jane Leatherman
Secretary/Treasurer

At Groomer shed for awards and prizes



Tim Holly presenting Club of the Year award 2025

At Groomer shed for awards and prizes

Winners from the 2025 Poker Run



President Mike Bogart
P.O. Box 295, Sumpter Or 97877
pdxbogie@gmail.com
360-241-3443

Vice President Elaine Livran
P.O. Box 10, Sumpter Or 97877
elivran@yahoo.com
541-620-1504

Secretary/Treasurer Jane Leatherman
P.O. Box 3, Sumpter, Or 97877
svbmsc-sectreas@outlook.com
208-739-3498

Groomer Chair Jim Sheller
Co-Groomer Chair Wes Christensen
Director Wes Christensen
Director Gary Applegate
Director Dale Demaris
Director John Livran
Adviser Jim Sheller
Poker Run Chairman Ron Shapland

Prize drawing

Ty Applegate getting 50 50 Raffle prize from John Livran \$642.50

Vickie Christensen winner Memebers only drawing 150 bucks

Mike Bogart (President) with the Club of the Year Award

District 6 Director Tim Holly
P.O. Box 568, Mt Vernon, Or 97865
ticah@ortelco.net



At Groomer shed for awards and prizes

Dave Hannibal giving Jim Sheller Groomer of the Year award

Tim Holly presenting Club of the Year award 2025



Moon Country Snowbusters had a chili feed for the Bachelor Dog Derby Sled Race. This year we switched it up to a Chili Cook off competition at the Wanoga snow shelter on March 2nd.

The mushers of the race voted on their favorite chili The first and second place winner was *Nate Holcomb, his white chicken chili won 1st place.*





Ready to Join the Santiam Snowmobile Club? Signing up has never been easier!

Just a few clicks and you'll be part of an amazing community that loves the outdoors as much as you do. Whether you ride snowmobiles or side-by-sides, we've got events, trails, and adventures waiting for you!

Join today: <https://members.oregonsnow.org/.../Application/QraZaqpW>

Let's ride, volunteer, and grow together!

#JoinTheClub
#Snowmobiling
#SideBySide

#OutdoorAdventure
#SantiamSnowmobileClub

#MembershipMatters
#GetInvolved



I wanted to send out a couple updates.
We are at 55 members, wahoo!!!!

Poker Run recap..... we sold 343 hands, had pretty good 50/50 raffle-\$240 brought in. The weather was nice and everyone seemed to have a good time. Congrats to the luck stop winners and to 1st, 2nd, and 3rd place winners as well. Hope to see everyone again next year.

Kiddos from all skills levels are encouraged to come and hook up with other kiddos to have a great day on the mountain, riding and learning new skills. Meet at Salt Creek Summit at 9:30 am
The Kids Play Day, games, free lunch and prizes is scheduled for March 22nd

Salt Creek Cabin Great way to kick off Spring Break. Kiddos must pre register by March 6th. For more details contact Mandy 541-263-1892

We want to encourage you to be involved in your clubs, we could use some extra volunteers, some fresh ideas and new things to do as a club. Wanna put on a ride, wanna make a pot of chili for meeting nights, wanna help with poker run, wanna help clear trails, let us know.



Snowmobile Safety Tips

Provided by the Oregon State Snowmobile Association

Never ride alone (it could be deadly)

- You could get stuck, breakdown, or get lost.
- You could have snowmobile roll over and pin you down.

New rider instruction

- Squeeze throttle slowly until you get used to the power.
- Hold tight, but do not have a death grip on handlebars. Allow handlebars to move slightly (usually an inch) from side to side.
- Do not follow too close.
- Do not cut blind corners.
- Stay on main trails. Tree stumps and rocks can be hidden under the snow off trail.

Alcohol and drugs (even prescription or over the counter)

- Impairs ability to react and think

Carrying passengers

- Most snowmobiles are not designed for carrying two passengers
- 2-Up snowmobiles are safest for two people
- Hazards of having a person sit in front of you on a non 2-Up
 - Hit head on handlebar, dash, or windshield on fast stop
 - They can accidentally grab the throttle
 - Sharp right turn will force front passenger into throttle
 - Reduce right turn will force front passenger into throttle
 - Reduce ability to handle the snowmobile safely



GPS Maps

- Free GPS maps for your mobile device are available at <http://oregonsnow.org/clubs/>

Follow the leader

- Leader should never disappear, even if followers know where the leader is going
- Leader should slow down at corners so that everyone takes corners at a safe speed (especially important if leading beginners)

Obey the laws to preserve our ride to ride

- 5 MPH in the Sno-Park
- Reduce excessive noise around Sno-Park and non-snowmobilers
- Slow down and stop if necessary when approaching sled dogs
- Slow down when passing skiers and pedestrians
- Avoid accidents, do not follow too close
- Respect the environment. You can be fined for destroying trees.

Protecting the snowmobile

- Overheating is the #1 cause for expensive repairs. Rental agencies will charge you for repairs related to overheating.
- Watch temperature gauge and use ice scratchers when needed.
- Going too slow for too long (less than 10 MPH) can cause overheating on almost any snowmobile.

Safety

- It is easier than you think to become dehydrated. Carry water and a protein bar.

What to do when stuck

- Avoid gunning the engine as you will become more stuck
- Tip sled on its side and pack snow under. When all else fails, get out shovel.

Clothing

- Avoid scarves or loose clothing that could get caught on snowmobile.
- Dress in layers. Cotton will stay wet and is dangerous in extreme conditions.
- Two or three thin layers will keep you warmer than one thick piece of clothing
- Thick gloves are great for skiing but bad for snowmobiling. Thick gloves prevent the head from heated handlebars from warming your hands and reduce your ability to hold the handlebars and work the brake and throttle.

For additional safety information go to <http://www.snowmobileinfo.org/>





Introducing the New Prinoth 3.4m Power Tiller: Optimized for Trail Grooming Excellence



Prinoth has raised the bar for trail grooming with the all-new 3.4 meter Power Tiller, designed to deliver unmatched efficiency and precision. This is a great solution for clubs who want to trail groom with a tiller instead of a drag. Built with versatility in mind, this powerhouse is available in two configurations to suit varying needs:

- 44-inch tracks paired with a 10-foot blade
- 58-inch tracks paired with a 12-foot blade

Both options offer exceptional grooming capability, even with track edges extending slightly beyond the cutter bar. This smart design ensures clean, consistent results without compromising tilling performance.

Engineered specifically for single-pass grooming, the 3.4m Power Tiller eliminates the need for pass matching—making it an ideal solution for maintaining snowmobile trails. Whether you're tackling tight trails or wide-open stretches, this tiller guarantees top-tier performance with every run.

For operators looking to streamline trail maintenance while delivering smooth results, the Prinoth 3.4m Power Tiller sets a new standard in grooming technology.

Prinoth

PROUD TO BE YOUR TRAIL GROOMING PARTNER IN **OREGON**

REACH OUT TO YOUR
LOCAL SALES REP

Nathan Vandersluis
nathan.vandersluis@prinoth.com
(541) 948-0860

SCAN THIS CODE
TO LEARN MORE!



TUCKER SNO-CAT®

CORPORATION

No road too steep...

NO SNOW TOO DEEP.

Building Quality Since 1942.



SCAN THIS CODE

**Made in
the USA!**

**Call: 866-SNO-CAT1
or 541-779-3731
www.SNO-CAT.com**

*Experience the
4-Track Advantage!*

2872 S Pacific Hwy • Medford, Oregon 97501 • Fax: 541-779-3735



WHERE PRECISION



MEETS PERFORMANCE

Piston Bully[®]

For parts, service, and sales, call
our Oregon office:

503-783-1935

Or contact Colin Hales at:

503-550-5941



#6,400 miles
of volunteer
groomed trails

A Day in the Life of a Volunteer Groomer

Did you know that OSSA has 24 clubs in Oregon and that all 24 clubs volunteer to groom the snowmobile trails?

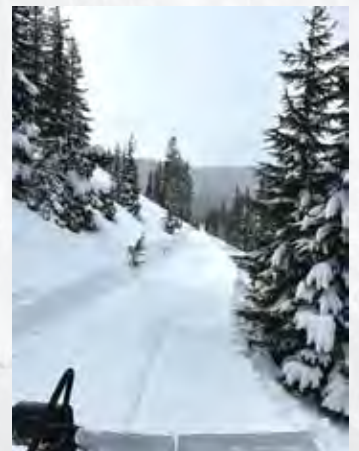
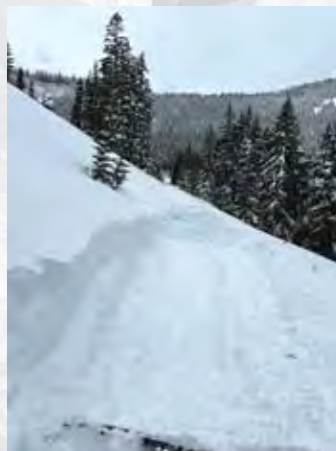
Typical Grooming Day:

- 5:00 am** Wake up.
- 6:00 am** Drive 90 minutes up to the mountain.
- 7:30 am** Prepare the Grooming Machine for the day.
- 8:00 am** Begin Grooming the trails.
- 8am to 6pm** Groom the trails, remove fallen trees, remove moguls, make roads through snow drifts.
- 6:00 pm** After grooming 50 to 60 miles return to Groomer Barn and begin refueling and cleaning the Groomer.
- 7:00 pm** Head for home.
- 8:30 pm** Arrive home and crash.

Did you know that the best way to **“THANK YOU”** to a groomer volunteer is to renew your membership every year?

Many OSSA members join every club in every area that they ride just to say, **“THANK YOU”!**

Oh yeah, if you see a Groomer Volunteer be sure to shake their hand and say **“THANKS”**.



Moon Country Snowbusters

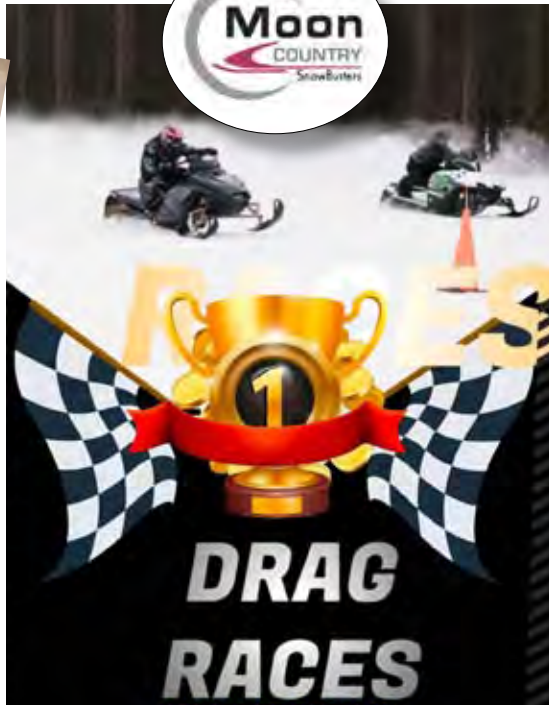


SLED DRAGS



held at Wanoga Snow Park

Races were held February 22nd. Stock, Mod(turbo, etc), Just for fun, Teen 12-18 Yr Old's and Kid's 6-11 Yr. old (200cc Max)



Stock

1- Megan	218.00
2- Cody	128.00
3- Clayton	45

Just for fun

1- Brandt	75.00
2- Josh	45.00
3- Derrick	20.00

Mod

1- Brandt	175.00
2- Cody	110.00
3- Steven	38.00

Stock Mod

1- Brandt	175.00
2- Cody	110.00
3- Steven	38.00





Oregon Vintage Snowmobile Race Circuit produced a snow oval race Feb. 22nd. Followed by Feb. 23rd with a one day Grand Prix snow race which included Leaf, IFS, and Modern Race with racers bringing anything they had up to 2025 models.

Racers and spectators all had a great and enjoyable time in Sumpter, Or

We have a number of action photos for you to enjoy from the race in the next few pages.
THANK YOU !! TO Jina McKinley Carniglia and Jake Bork for all the fantastic photos!

Spread the word and make plans to participate and attend the 2205-26 season in Sumpter Oregon!

Visit our Facebook site for information
 Oregon Vintage Snowmobile Race Circuit



VINTAGE SNOWMOBILE RACE AND SHORT CROSS-COUNTRY RACE

SUMPTER OREGON

- VINTAGE SNOWMOBILE OVAL RACES
SATURDAY FEBRUARY 22ND
- SHORT CROSS-COUNTRY RACE SUNDAY
FEBRUARY 23RD
- VINTAGE OVAL RACES FOR LEAF SPRING SNOWMOBILES
1985 AND OLDER AND IFS SNOWMOBILES 1990 AND
OLDER
- CROSS-COUNTRY RACE CLASSES
FOR VINTAGE AND NEW
SNOWMOBILES, AND
SNOWBIKE CLASSES
- MOVIES CLASSES FOR NEW RACERS
- YOUTH CLASSES



COVERED SPECTATOR AREA WITH SEATING. LIMITED FOOD AND BEVERAGES AVAILABLE ON SITE OR GRAB A DELICIOUS MEAL AT A LOCAL RESTAURANT.

RACER REGISTRATION WILL BE 6PM TO 8PM FRIDAY 21 AT THE STAGE STOP, 8AM TO 9AM SATURDAY 22 AT THE RACE, SATURDAY 6PM TO 7PM AT THE STAGE STOP, AND 8AM TO 9AM SUNDAY AT THE RACE. ALL RACERS MUST BE ENTERED BEFORE 8AM THE DAY THEY ARE RACING. PLEASE CHECK FACEBOOK FOR RULES OR EMAIL FOR MORE INFORMATION.

FOR RACER INFORMATION, RULES, AND CLASSES, CHECK OUT OREGON VINTAGE SNOWMOBILE RACE CIRCUIT ON FACEBOOK. CONTACT JAKE AT OREGONVINTAGESPC@AOL.COM WITH QUESTIONS.









THANK YOU TO: RACE SUMPTER, SUMPTER SNOWMOBILE CLUB, SUMPTER WILLY WOODENTERS, AND THE CITY OF SUMPTER









Snowmobiling Statistics and Facts

Our yearly [snowmobiling fact book](https://www.snowmobile.org/docs/isma-snowmobiling-fact-book.pdf) provides detailed information on the following:

- U.S. snowmobile registrations
- U.S. snowmobile sales
- Canadian snowmobile registrations
- Canadian snowmobile sales
- Snowmobile history
- Snowmobile lifestyle
- Economic impact
- Snowmobiling in Europe
- Snowmobile community
- Snowmobile charities
- Trails
- Snowmobile impact on wildlife
- –and much more

<https://www.snowmobile.org/docs/isma-snowmobiling-fact-book.pdf>

Snowmobiling Quick Facts

There are four major manufacturers that build snowmobiles. They are: Arctic Cat – Headquartered in Thief River Falls, MN; BRP – Headquartered in Valcourt, Quebec; Polaris Industries – Headquartered in Medina, MN; and Yamaha Motor Corporation – Headquartered in Ontario, Canada.

In 2024 there were 112,650 snowmobiles sold worldwide; 51,987 were sold in the U.S. and 38,599 were sold in Canada.

There are 1.27 million registered snowmobiles in the US and over 555,000 registered snowmobiles in Canada.

The Economic Impact of Snowmobiling

- United States—\$26 Billion annually
Canada—\$9.3 billion annually
Europe—\$4 billion annually
- Over 100,000 full-time jobs are generated by the snowmobile industry in North America. Those jobs are involved in manufacturing, dealerships, and tourism-related businesses.





Snowmobiler Profile

- The average age of a snowmobiler is 54 years old.
- The average snowmobiler spends \$2,500 each year on snowmobile-related recreation.
- 50% of snowmobilers trailer their snowmobiles to ride. 50% snowmobile from their primary residence or have a vacation home where they keep and use their snowmobiles.
- Snowmobilers are caring neighbors, they raised over \$3 million for charity annually.
- There are 3,000+ snowmobile clubs worldwide, involved in trail grooming, charity fundraising, & family activities.
- There are over 42 registered non-profit associations representing snowmobilers in the US, Canada, and Europe.
- Snowmobiling is great exercise bringing people outdoors and interacting with nature and each other. It is an invigorating sport, great for stress release and good mental health.

Snowmobile Use

The use of snowmobiles in National Parks is regulated by federal Law Enforcement. Snowmobiling occurs on roads groomed and marked for snowmobiling, the same roadways used by recreational vehicles, cars, trucks and busses. Snowmobiles are NOT used as off road vehicles in National Parks such as Yellowstone, Rocky Mountain and Grand Teton.

On US National Forest Land, most of the trails used by snowmobiles are on groomed roads used by summer recreationists. There are also secondary and seasonal roads within the forests used by snowmobilers. These roads are groomed and marked by volunteers who work closely with the local U.S. Forest Service staff in maintaining and managing those areas.

The manufacturers have always been actively involved in promoting safe riding behavior while snowmobiling. Over one million safety-related brochures and decals, and hundreds of thousands of posters and safety DVDs have been distributed free of charge to snowmobile enthusiasts throughout the world. Safety trainers, enforcement officers, Chambers of Commerce, etc. use safety materials provided by the manufacturers through the **Safe Riders! You make snowmobiling safe™ safety campaign.**

LOCALLY OWNED AND OPERATED
EST. 2023



WE'LL GET YOU THE MOST MONEY
FOR YOUR VEHICLE GUARANTEED!

■ Free Instant Cash Offer

■ 72-hour Live Auction

■ Fast, safe, and secure

■ Only pay if it sells

★ 4.9 ON GOOGLE



SELL TODAY

160+ REVIEWS

☎ (360) 718-7424

🌐 carsolve.com



500+ VEHICLES SOLD





Klamath Basin Snowdrifters **2024/2025 Schedule of Events**

General meeting locations are to be announced prior to the meeting on Facebook, due to limited seating and options. In addition, locations for club rides will also be announced on Facebook and at the general meeting prior to the ride.

Here is a link to the OSSA sign up page for the Klamath Basin snowdrifters.
<https://www.oregonsnow.org/klamath-basin-snowdrifters/>

March 2025

Tuesday 3-11-25: General Meeting 7pm, dinner at 6 PM (location TBA)

Saturday 3-22-25: Club Ride (details TBA)

April 2025

Tuesday 4-8-28 General Meeting 7pm, dinner at 6 PM (location TBA)

Saturday 4-19-25 End of Year Banquet at Trappers @ 5pm



Oregon State Snowmobile Association

OSSA Membership

We encourage everyone to join their local snowmobile club which automatically includes an Oregon State Snowmobile Association membership.

You can be a member of OSSA without joining a local club. However, please consider joining the clubs where you ride in Oregon. These clubs groom and maintain the trails that you enjoy riding on.

If you live in another state or for some other reason don't want to join a local snowmobile club you are welcome to become an OSSA only Member.

Who Can Join?

Anyone who enjoys the outdoors can be a member including cross country skiers, snow shoers, dog sledgers, snow bikers and of course snowmobilers.

Why should I join?

Our mission is to protect and enhance the sport of snowmobiling. We work closely with the Forest Service and BLM to keep areas open, resolve conflicts, and to provide the quality snowmobiling that Oregon is famous for. We work with local, state, and federal legislators to protect the rights of all snowmobilers. We fight any damaging legislation, and we support legislation that helps our sport. We coordinate with industry, national and international snowmobile groups to share knowledge, provide mutual support, and protect the sport we all love so dearly.



SNOWMOBILING IS A FUN FAMILY ACTIVITY



Join us today!



YOUTH OPERATORS
NEED SAFETY
TRAINING

KEEP THEM SAFE.
GET THEM TRAINED.

This message brought to you by the American Council of Snowmobile Associations
www.snowmobilers.org

Are you New to snowmobiling ?

Do you want to learn how to ride Safely ?

Do you want your kids under age 16
to be able to ride Legally ?

Oregon Snowmobile Law says:

ORS 821.150 drivers license or permit required. Class D Fine up to \$250

**We can CERTIFY kids 16 and under
without a driver's license.**



The OSSA Safety Program

Below is a list of current state approved snowmobile safety trainers.

Please contact your local trainer to get your kids 16 or younger without a drivers license trained and obtain their snowmobile safety certificate now.

Medford Area

Dennis Jordan (541) 826-6326

Portland Area

T.J. Relly (503) 804-2075

Roseburg Area

Glenn Shirek (541) 673-3787

Salem Area

Maria Sammons (503) 589-5552

Klamath Falls Area

David Miller (541) 884-2423

Boring Area

Brent Younker (503) 695-2911

Hood River Area

John Vogel (541)-490-8114

John Day Area

Lyle Klenski (541) 620-1324

Enterprise Area

Randy James (541) 426-3854



SNOWMOBILE RENTAL COMPANIES

Portland Area Snowmobile, ATV, Dirt Bike & SxS rentals

<https://mthoodatv.com/>

Portland snowmobile rentals

<https://skwatercraftrentals.com/Rentals-Tours/Snowmobile-Rentals>

Mt Hood guided snowmobile tours

<http://www.mthoodoutfitters.com/winter/snowmobiling>

Southern Oregon & Rogue Valley snowmobile rentals

<http://www.rentsleds.com/>

Mt Bachelor guided snowmobile tours

<http://www.coadventures.com/>

Mt Bachelor snowmobile rentals at Elk Lake Lodge

<https://outridersnw.com/> 503-298-9175

Sunriver area snowmobile rentals:

<http://floatationnation.com/>

Bend area snowmobile rentals:

<https://adventurerentals.weebly.com/>

Central Oregon snowmobile rentals

<http://www.central-oregon-rentals.com/snowmobile-rentals.html>

Elk Lake Lodge snowmobile rentals

[http://elklakeresort.net/
activities/winter/](http://elklakeresort.net/activities/winter/)

Diamond Lake Lodge snowmobile rentals

<http://www.diamondlake.net/winter-recreation#snowmobile>

Odell Lake Lodge snowmobile rentals

<http://www.odelllakeresort.com/activities/snowmobiling/>



To enjoy this...



Volunteers are needed for this!



WE ARE SO THANKFUL FOR OUR VOLUNTEERS!

Klamath Basin Snowdrifters



Always wear protective gear to stay safe

Did you know ...

Your privilege to snowmobile is being threatened?

**Do you know who's representing your snowmobile interests
in Washington DC?**

It's the American Council of Snowmobile Associations (ACSA).

Are you a member? Do you care about snowmobiling?

Make sure YOUR voice is heard.



**Join your local snowmobile club,
your state snowmobile association and
become a member of ACSA TODAY
for only \$15.00!**

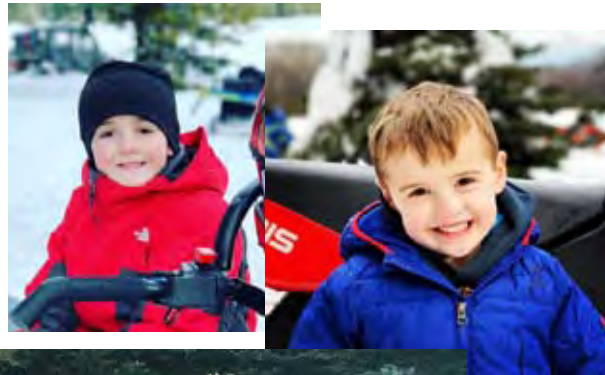
Now's the time to get involved!

www.snowmobilers.org

ACSA
equals
ACCESS



Four Corners Club



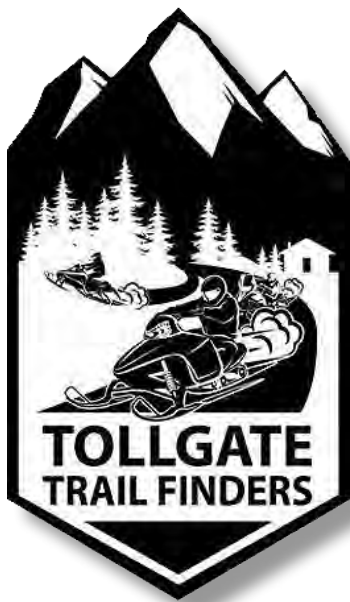
Klamath Basin
SNOWDRIFTERS





Chiloquin Ridge Riders
12080 Homedale Road
Klamath Falls, OR 97603





CC Riders Cascade Connection Snowmobile Club Roseburg, OR Douglas County

Harney County Snowmobile Club







OSSA News Is Needing
 YOUR Club group, event and
 member ACTION photos
 for publication!
 Please email them to:
gscott@oregonsnow.org

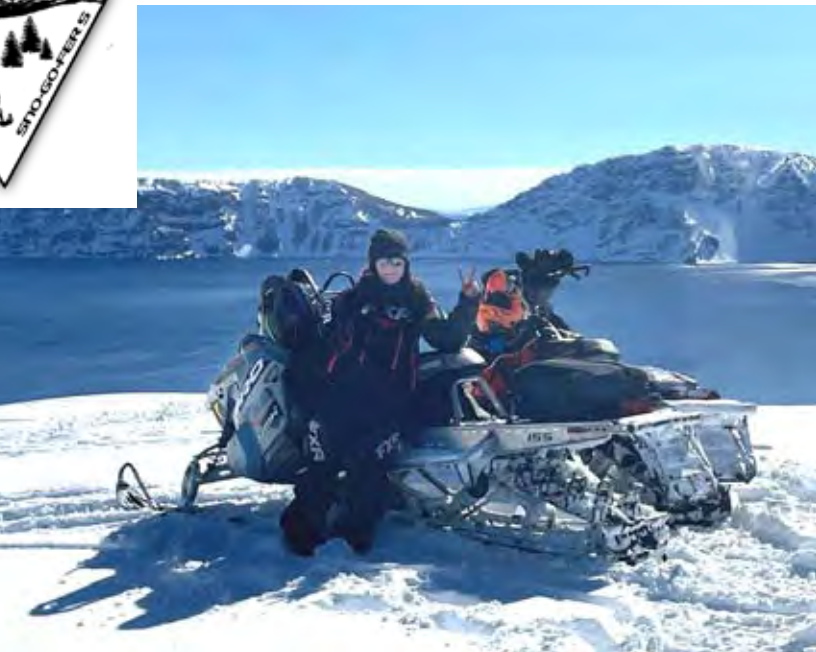


Make New Friends, Join a Snowmobile Club

You'll Never Ride Alone

International Snowmobile Manufacturers Assn.
 1640 Haslett Road • Suite 170 • Haslett MI 48840
 (517) 339-7788 • www.snowmobile.org







Two Rivers Activity Club



BE INFORMED!



BE A WINNER!

Visit snowmobileinfo.org for everything snowmobile.

Connect with snowmobiling





Oregon State Snowmobile Association

The Oregon State Snowmobile Association is a non-profit organization formed in 1972 by a small group of snowmobilers working to find a way to provide a groomed statewide trail system and to assure continued access to our public lands. We are currently an organization with twenty-five member clubs and a trail system of 6,410 miles of multi-use snowmobile trails. We promote safe and responsible snowmobiling, represent snowmobilers as an organized group and promote proper recreational use of our land by working together with the Forest Service, BLM and other land managers to develop and maintain a quality trail system and winter recreation opportunities. Our mission, briefly stated, is to protect, promote and enhance the family sport of snowmobiling.

Our Mission

Our mission is to protect and enhance the sport of snowmobiling. We work closely with the Forest Service and BLM to keep areas open, resolve conflicts, and to provide the quality snowmobiling the Oregon is famous for. We work with local, state, and federal legislators to protect the rights of all snowmobilers. We fight any damaging legislation, and we support legislation that helps our sport. We coordinate with industry, national and international snowmobile groups to share knowledge, provide mutual support, and protect the sport we all love so dearly.

******* Snowmobilers Leave No Trace *******