



WWW.OREGONSNOW.ORG FREE PUBLICATION

NOV-DEC. 2024

OFFICIAL PUBLICATION OF THE OREGON STATE SNOWMOBILE ASSOCIATION



# 2025 OSSA Convention January 16-18th



[Click this link to view event and register](https://oregonsnowmobileassociation.growthzoneapp.com/ap/Events/Register/6VF17M5TmC1CZ)

[https://oregonsnowmobileassociation.growthzoneapp.com/ap/Events/  
Register/6VF17M5TmC1CZ](https://oregonsnowmobileassociation.growthzoneapp.com/ap/Events/Register/6VF17M5TmC1CZ)



OSSA Membership signup link

<https://www.oregonsnow.org/become-a-member/>



# Oregon State Snowmobile Association Membership Update

I'd like to thank everyone for supporting our volunteers by renewing their memberships.

Our organization is growing every year.

Did you know that we have more family memberships than Washington, Idaho, Montana, Utah and California?

- **YES WE DO!**

You should be very proud of the Oregon State Snowmobile Association as we not only have the best volunteers, but we also have the best grooming program in the Northwest.

Help us grow OSSA and your local club by getting your friends to join today.

Individual/Family Memberships Application - Go to Oregon State Snowmobile Association ([oregonsnow.org](http://oregonsnow.org))

Thomas Reilly, Vice President  
Oregon State Snowmobile Association

membership signup link.  
<https://www.oregonsnow.org/become-a-member/>

Individual/Family Memberships Application - Oregon State Snowmobile Association([oregonsnow.org](http://oregonsnow.org))

---

## *Hello Snowmobilers!*

Christmas is a time for expressing gratitude and appreciation for the blessings in our lives. As I look back over this year with heartfelt thanks, I also look forward to all of the exciting events coming up.

The 2025 OSSA Convention will be held on January 16-18, 2025, at Diamond Lake Resort. Sign up at [2025 OSSA Convention - Event Registration](#)

Clubs have a fun-packed schedule planned for this 2024-2025 season. Join a club today!  
[Become a Member - Oregon State Snowmobile Association](#)

I wish you all a Merry Christmas and a Happy New Year.

Think Snow

Lisa Mahoney, Executive Director

Oregon State Snowmobile Assn.

---



<https://www.facebook.com/AmericanCouncilofSnowmobileAssociations>

International Snowmobile Safety Week January 11-19, 2025

Take a Friend Snowmobiling Campaign February 8-17, 2025





# Motorized Avalanche Rescue Class

## Ten Mile Sno-Park

### January 31, 2025 8:30 AM

LINK FOR TICKETS: [oregonsnowmobileassociation.growthzoneapp.com/ap/Events/Register/AnFBjgliVCdCN](https://oregonsnowmobileassociation.growthzoneapp.com/ap/Events/Register/AnFBjgliVCdCN)

OSSA is offering this avalanche class to OSSA members.

Certified class by American Avalanche Association. Prerequisite for level II, but can be taken anytime. Fast paced eight hour class with minimum of six hours in field. This is a motorized specific class and you will be traveling to areas with your snowmobile or snow bike. Classroom portion will be online at your own pace on your time. No scheduled video conferences.

Who? For recreational riders, pros, guides, and search and rescue teams.

Class content: Escape and survival techniques, rescuer safety/response, scene safety, communication, transceiver, shoveling and probing techniques, victim basic care, deep burials, close proximity rescues, using advanced features on your transceiver, three ways to utilize snowmobiles in rescue, leading a rescue, rescue scenarios, timed transceiver searches and much more.

These are the advanced skills that were previously taught in level II classes, it is now a separate course and a prerequisite for level II.

Location: 10 Mile Snow Park. LaPine, OR 97739

Cost: \$300

Refund policy: No refunds will be given within 30 days of class start date.

Date: Friday January 31, 2025

Time: 8:30 am -5:00 pm

Class starts: Friday 8:30 am at the 10 Mile Snow Park and then we travel by snowmobile or snow bike into the backcountry. Be ready with gear and all gassed up. Tight schedule, please don't delay the group.

What to do for preparation: Read your transceiver manual and know the features of your transceiver. Practice single and double burial transceiver drills before class. Make sure all your gear is ready. Make notes on questions you have for class.

The riding in class. We are using Jeep roads and single track to access terrain in class. Have your machines in excellent working order.

What to bring: Snowmobile or Snowbike. Transceiver (3 antenna), shovel, probe, tunnel bag, backpack or airbag pack, sunglasses, multiple pairs of gloves, sunscreen, face protection, survival and first aid gear, hat, food (lunch) and water for in the field, extra layers, head lamp, camera. If you don't have gear, please let me know and I can supply it.

Dress warmer than expected. We are out in the elements for long periods of time at high elevation. Bring a thermos with hot liquids if it is going to be cold. We do not cancel for cold weather.

What we supply: I can supply digital 3 antenna transceiver if you do not have one. Let me know.

Instructor: Mike Duffy. Professional member and Certified instructor American Avalanche Association. Teaching at American Avalanche Institute, Alaska Avalanche School, Colorado Mountain College and Silverton Avalanche School. Rescue/avalanche team leader/ Vail Mountain Rescue Group. Graduate of National Avalanche School, National Academy of Winter Guiding, AVPRO & Professional Avalanche Search & Rescue. Mountain Snowmobiler for 25 years. Provided training for Arctic Cat, Polaris, Ski-Doo, FBI and Navy Seals. Backcountry Guide/riding instructor. 24 years' experience in proven, effective avalanche education.

Looking forward to this! Any questions or running late, please contact Mike Duffy at 970-390-9433 or [duffyavalanche1@gmail.com](mailto:duffyavalanche1@gmail.com).

# 2025 OSSA Convention



## Description

Diamond Lake Resort

350 Resort Dr

Diamond Lake, OR 97731

Call Diamond Lake Resort (541) 793-3333 for room reservations. Mention OSSA Convention for discount.

## Event Schedule:

### **Thursday, January 16th - Brews, Brats, & Brap**

Starts at 6:00 PM - Mt. Thielsen Room/Diamond Room Lounge

- \* Includes 1 Bratwurst either plain, w/chili, or w/sauerkraut.
- \* 1 Draft Beer or Glass House Wine
- \* Snowmobile movies on the big screen
- \* Additional brews and brats available at menu prices.

### **Friday, January 17th - Pizza Night**

Starts at 6:00 PM - Mt Thielsen Room/Diamond Room Lounge

- \* Provided by PistenBully, Prinoth, and Tucker Sno-Cat®
- \* This is a free event but please register. We need to get a head count.
- \* No Host Bar

### **Saturday, January 18th - Buffet Dinner**

Starts at 6:00 PM - Mt Thielsen Room/Diamond Room Lounge

- \* Carved to order Herb Crusted Prime Rib with Horseradish and Au Jus Sauces
- \* Marinated Chicken Served on Wild Rice Topped with Bacon, Mozzarella Cheese, Diced Tomatoes and Green Onion
- \* Roasted Yukon Gold Potatoes
- \* Macaroni and Cheese
- \* Fresh Vegetables
- \* Toss Green Salad w/dressing
- \* Pasta Salad
- \* Fresh Baked Bread
- \* House Made Cheesecake
- \* Coffee, Tea, Milk or Soda
- \* No Host Bar



**[Click this link to view event and register](https://oregonsnowmobileassociation.growthzoneapp.com/ap/Events/Register/6VF17M5TmC1CZ)**

[https://oregonsnowmobileassociation.growthzoneapp.com/ap/Events/  
Register/6VF17M5TmC1CZ](https://oregonsnowmobileassociation.growthzoneapp.com/ap/Events/Register/6VF17M5TmC1CZ)

## Contact Information

Oregon State Snowmobile Association

Name: Lisa Mahoney

Phone: (541) 797-6880

Email: [Lmahoney@oregonsnow.org](mailto:Lmahoney@oregonsnow.org)

# Have You Ever Wanted to Operate a Snow Groomer?

Come to the 2025 OSSA Convention at Diamond Lake Resort!

We will be having a Grooming Seminar on Friday, January 17, 2025, from 9-5.

Representatives from PistenBully, Prinoth, and Tucker Sno-Cat® will be on-site to answer questions and take you for a test drive.



**52nd OSSA Convention**  
**January 16 -18th, 2025**  
Diamond Lake Resort



The OSSA Convention Backcountry Riding Clinic will be hosted by Luke Youngberg, a true Backcountry athlete. After graduating from college, Luke spent two winters as a guide and instructor in McCall, Idaho for CM Backcountry Adventures. After that he has been racing in the Rocky Mountain States Hill climb circuit, the last two years racing in the pro division.

Luke's ability to quickly identify what skills and techniques will help you to improve. He will break them down in easy-to-follow segments. Luke will then coach you through the process to help you master the skill. His talent to identify those skills and translate them into an easy-to-follow steps has made him a highly sought after instructor on the mountain. Luke's clinic will focus on true backcountry riding skills like, wrong foot forward, side hilling, downhill U-turns, brake control, how to get unstuck easier, and some avalanche rescue practice. OSSA is excited to bring Luke and his clinic back to the OSSA Convention on Friday January 17th and Saturday January 18th at Diamond Lake Resort. The clinics will begin at 9:00 AM. Space is very limited for these riding clinics. If you're interested, sign up now. This will sell out fast!

**What to bring:** Mountain sled, transceiver, shovel, probe, and backpack. Lunch, snacks, and water.

<https://oregonsnowmobileassociation.growthzoneapp.com/>.



# HAPPY NEWS FOR THE NEW YEAR !!

📺 Huge News: McKenzie Pass Grooming is ON for 2024-2025! 📺

🔥 Big win for the Mt. Jefferson Snowmobile Club and all our awesome riders! After months of hard work, we've officially locked in grooming operations on McKenzie Pass Highway 242 for the 2024-2025 season. Get ready for epic trails, smooth rides, and another killer winter on the mountain! 🍃

This is a game-changer for everyone who loves winter adventures on McKenzie Pass. We couldn't have done it without YOU—our community of over 3,000 supporters who signed the petition, shared the message, and proved just how much this place means to all of us. 🏔️🍃

So get your sleds prepped, your gear ready, and let's make this season unforgettable. This is just the beginning, and we're not slowing down. Next up: working toward a long-term solution to keep these trails open and legendary for generations to come. 🌟

Thank you for being the heart and soul of this incredible win. Stay tuned for updates, and let's ride into this season stronger than ever. Let's show everyone what this snowmobile family is made of! 🙌

-Jack Reynolds

[#braap](#) [#backcountry](#) [#sledLife](#) [#sendit](#)  
[#mountains](#) [#snowmobilenation](#)



take a friend  
**Snowmobiling**  
GoSnowmobiling.org



# Winter Adventures Await at Diamond Lake

As the landscape changes and the lake freezes over, there is so much beauty to explore at Diamond Lake.



From simple, rustic quarters to a spacious, modern retreat cabin. Plan your next getaway.

[www.diamondlake.net](http://www.diamondlake.net)



## SNOWMOBILE RENTALS



## SNOW TUBING



## ICE FISHING

Experience **DIAMOND LAKE**



- Motel Rooms - Cabins - Cafe
- Mt. Bailey Sports Bar and Grill
- South Shore Pizza Parlor - Store
- Marina - Gas Station w/ Non Ethanol Fuel
- Post Office - Laundromat
- Diamond Room Lounge - Diamond Lake RV Park

Snow Cat Tours to Crater Lake National Park  
 Cat Ski Mt. Bailey - Ice Fishing  
 Cross Country Ski and Snowshoe Rentals  
 Snowmobile Rentals - Snow Tubing



- Fishing Boats - Peddle Boats - Kayaks - Canoes - Patio Boats - Peddle Boards - Mountain Bikes
- Mountain Bike Trails - Horseback Rides
- Hunting - Fishing - Sight Seeing - Hiking
- Boating - Camping - ATV Trails and so much more...

Diamond Lake Resort is located at the summit of the Southern Oregon Cascade Mountains. On Hwy 138 just 5 miles North of Crater Lake National Park. We are the hub of 300 miles of groomed Snowmobile trails and the only snowmobile access to Crater Lake National Park.

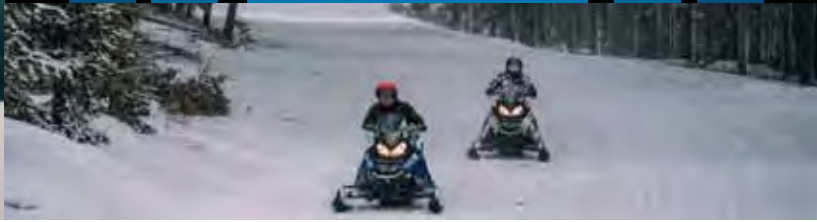
**541.793.3333 | [www.diamondlake.net](http://www.diamondlake.net)**




Schedule Your Next Event At



Oregon's Gem Of The Cascades





**ski-doo**



**GET FINANCING  
STARTING AT 0%**

for 36 months on select 2025 Ski-Doo models



**NORTHWEST  
POWERSPORTS**

**503 872-0000**

DISCOVER MORE AT [SKI-DOO.COM](https://ski-doo.com)

250 SE Division Place Portland, OR 97202 503-872-0000

Offer expires January 9th, 2025



©2024 Bombardier Recreational Products Inc. [BRP]. All rights reserved. \*,™ and the BRP logo are trademarks of BRP or its affiliates. In the U.S.A., products are distributed by BRP US Inc. Offers valid in U.S.A. only from December 4, 2024 to January 9, 2025. The conditions may vary depending on your location and this offer is subject to termination or change at any time without notice. This offer is not refundable, exchangeable or transferable (including from dealership to another), cannot be redeemed for cash, credit or other products of equivalent value and cannot be combined with any other offer or rebate. Null where prohibited by law. Until supplies last. Eligible models are new and unused 2025 Ski-Doo and Lynx models (excl. Youth and NEO models). 1 Financing starting at 0% APR (Annual Percentage Rate) for 36 months. Examples of monthly payments required over a 36-month term at a 0% APR rate: \$27.78 per \$1,000 financed. An example of a monthly payment with \$1,320 down, no rebate, an APR of 0% APR for 36 months at an MSRP of \$15,000 is \$379.99/mo. Total cost of borrowing \$0.00 with a total repayment obligation of \$13,679.84 Down payment may be required. Other financing offers may be available. Minimum and Maximum Amount Financed may vary. Not all buyers will qualify. Higher rates apply for buyers with lower credit ratings. Other qualifications and restrictions may apply, depending on the participating financial institution(s). BRP is not responsible for any of the financing terms and conditions. Offer subject to change without notice. Financing promotions void where prohibited. Carefully read the operator's guide and safety instructions. All adult snowmobile models are meant to be used by drivers of age 16 and older. Observe applicable laws and regulations. Always wear appropriate protective clothing, including a helmet. Riding and alcohol/drugs don't mix. Always ride responsibly and safely. See your authorized BRP dealer for details and visit <https://ski-doo.com/>.



Discover Your Dream Winter Getaway

# CRATER LAKE RESORT - YOUR NEXT VISIT INTO THE WILD

Sign up to unlock exclusive deals on your next hotel stay. Receive early access to limited-time promotions and personalized offers tailored just for you.

[www.craterlakeresort.com](http://www.craterlakeresort.com)

(541) 381-2349

We strive to provide our guests with hospitality, comfort & tailor-made service.

### 10 out of 10 - David (Expedia Reviews)

"Everything from the reservation system to the location of the resort was awesome. The very friendly staff definitely have a good eye on the quiet comfortable and safe accommodations. We just loved the peace and harmony afforded. Very clean and hot showers. My wife and I are really grateful to Crater Lake Resort for good vibes, accommodations and a starry night. Thank you!"

### 10 out of 10 - John (Expedia Reviews)

"We stayed in quaint little cabins that were just perfect, and incredibly clean. The deck overlooked a little stream (that we canoed in with the free canoe), and the office/store was nicely stocked with snacks, food, and refreshments. The staff was very friendly. It is a beautiful, uncomplicated place that was very enjoyable. We will be back!"

#### EXTRAORDINARY ACCOMMODATIONS

## Indulge in a diverse array of activities at our Premium Resort

We offer a variety of amenities to make your stay comfortable and convenient, including full RV hookups, laundry facilities, a general store stocked with groceries, supplies and adult beverages; propane exchange stations; free WiFi; EV charging station; pickleball court; hiking trails featuring a floating bridge and a covered bridge; canoes to navigate Fort Creek; a children's playground; and recreation center available for weddings, conferences, and parties.

## Welcome to Crater Lake Resort

Discover the beauty and tranquility of Crater Lake, Oregon, at Crater Lake Resort.

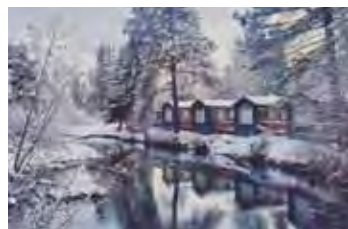
Nestled in the heart of nature, our resort offers a perfect getaway for outdoor enthusiasts, families, and those seeking peaceful relaxation. Whether you're here to explore the world-famous Crater Lake, hike the scenic trails, or unwind by the campfire, Crater Lake Resort is your home base for adventure.

## Just 6 miles from Annie Creek Sno-Park.

## 541-381-2329

## [www.craterlakeresort.com](http://www.craterlakeresort.com)

Cabins, RV Sites with full hookups, Tent sites and much more...



#### INTRODUCING OUR SERVICES & FACILITIES

## Everything you need to ensure your journey is flawless.

At Crater Lake Resort, we foster a friendly and welcoming community of RV enthusiasts, hikers, campers, and nature lovers. Join us for social events, live music, and more.



50711 Crater Lake Highway, Chiloquin, Oregon 97626

Hours of Operation:

Mon - Wed Noon to 5pm

Thurs - Sun 10am to 5pm



## Budget Cuts Impacting Trail Grooming In Oregon

The Oregon Snowmobile Association (OSSA) manages around 6,400 miles of trails in the state and our dedicated volunteers typically groom about 32,000 miles each year, but we're facing significant changes ahead. The Oregon Department of Transportation (ODOT) has informed us that our budget will be cut by 30% for the upcoming season, and we will only be reimbursed for approximately 22,000 miles instead of the usual 32,500 miles. In response, OSSA has instructed all grooming clubs in Oregon to reduce their grooming mileage by 30% and tighten their belts wherever possible on overhead costs.

To minimize the impact on the trails you enjoy, club grooming chairmen across the State will take the following measures:

- **Prioritize:** reduce or eliminate grooming on the least popular trails while trying to keep the more popular trails groomed on a regular basis
- **Groom Wisely:** groom trails only when they are most in need.
- **Optimize Conditions:** Grooming will only occur when conditions allow for the most effective use of our equipment.
- **Efficiency:** cut grooming program overhead costs wherever possible such as cat shed heating bills, optimize SPOT satellite tracking accounts, optimize Serius radio accounts, etc.

At the end of each winter season, OSSA reports the total miles groomed to ODOT, which then allocates funding for the next year's operations. This funding is based on mileage groomed but cannot exceed 32,500 miles per season. The funds come from gas taxes collected by ODOT, which are intended for highway maintenance. Since snowmobiles don't use highways, ODOT estimates the gas tax contributions from registered sleds in the State and that money is allocated to support the snowmobile program. The snowmobile program had built up some reserves but, in recent years, reserves for the snowmobile program have dwindled and ODOT has indicated that projected income will not cover historical expenses.

# Budget Cuts Impacting Trail Grooming In Oregon

The existing formula for funding the snowmobile program has been in place for decades, and it has worked for decades, so let's examine that formula and see what has changed to make it not work any longer. Snowmobile registration fees in Oregon are only \$10 per year and most, if not all, of this money is spent for the administration process of registering the sleds by ODOT. Oregon's snowmobile program sees very little of the registration fees but the State estimates that each registered snowmobile in the State purchases 170.76 gallons of gas per year and the State highway fuel tax on those gallons is \$.40 per gallon. So for every registered sled in Oregon, ODOT is instructed to spend  $170.46 \times .40$ , or a total of \$68.30 per registered sled, on the State's snowmobile program. This fuel tax money provides the primary funding for our grooming program and while the fuel tax figures in this formula have remained mostly constant, the critical variable of the formula is the number of registered sleds in Oregon.

The total number of sleds registered in Oregon has been declining for the past several years. In 2018 the total number of snowmobiles registered in Oregon was 13,259 and that number has declined every year since, to the current total of 10,790 in 2023 ... nearly a 20% reduction in just 6 years. New sleds are automatically registered with the DMV as they leave the showroom floor. Annual sales of new sleds in the US reached a high in 1997-1998 of 160,000 and declined steadily until around 2010. Since 2010, annual sales of new sleds in the US have been steady at around 60-65,000 each year. Oregon stats for new sales of sleds are unavailable but it is reasonable to assume that Oregon's new snowmobile sales stats reflect the national trend. This would suggest that registration of NEW snowmobiles in the State have remained steady for the last 14 years and does not contribute to the decline in Oregon registrations.

This raises questions about the renewal rate of snowmobile registrations and the number of unregistered sleds in use. There are various reasons that might lead to an unregistered snowmobile; a sled only operated on private land, a sled that sits in a garage all winter and is not actively used and a sled that is not in compliance. While there is no way to determine how many unregistered snowmobiles are in Oregon, a Montana poll suggests that 65% of all sleds in that state are not registered, hinting that Oregon may face a similar issue. Also at issue is the popular use of snowbikes as a replacement for snowmobiles. The snow kit part of a snowbike does not require registration as it is not motorized. However the motorcycle part of a snowbike does need to be registered but it is required to be registered as the same type of vehicle that it is titled as. This means that a motorcycle that is titled for highway use or as an ATV can not be registered as a snowmobile. However, any motorcycle can be registered as a snowmobile but as a snowmobile it would be illegal as a highway vehicle or an ATV for summer use when the snowbike kit has been removed and the wheels re-installed. Confusing? Yes, it's even confusing for the folks down at the DMV office.



# Budget Cuts Impacting Trail Grooming In Oregon

1. **Encourage Registration:** First and foremost is that we all register each and every one of our snowmobiles, even if it's the old 2-Up boat anchor that only gets used once a year at the Candlelighter's event.
2. **Snowbike Registration:** Riders that use a dedicated motorcycle for their snow kit can title and register their motorcycle as a snowmobile and renew that registration annually.
3. **Spread Awareness:** Educate fellow riders, and use a bit of peer pressure, on the important piece that snowmobile registration plays in the funding of our grooming program. Every unregistered sled on our trail system is costing the trail grooming program almost \$70 per year.
4. **Lobby for a Trail Fee:** Advocate for an additional fee that every user of a groomed trail would pay ... including skiers, fat bike riders, dogsled teams, etc.
5. **Support Inclusion of Other Vehicles:** Push for allowing tracked side-by-sides on our groomed trails and ask for a similar gas tax share for their use on trails.
6. **Non-Resident Permits:** Propose a non-resident permit for our out-of-state visitors to use groomed snowmobile trails.
7. **Increase Registration Fees:** Consider raising Oregon's annual registration fee, with the additional funds raised being dedicated to the grooming program. Currently, Oregon's annual registration fee stands at \$10, significantly lower than fees in neighboring states. Here are a few examples of how other states are supplementing the funding of their programs:
  - In Washington, registration fee is \$50 per year and includes an annual snopark permit
  - In Idaho, registration fee for resident is \$45 per year and \$60 for non-resident
  - In California, registration fee for resident is \$25 per year and \$30 for non-resident
  - In Montana, resident registration is a one time fee of \$60 plus a trail fee of \$20 for residents and \$35 for non-residents
  - Utah snowmobile registration is \$22 for residents and \$30 for non-residents

We must work together to formulate a sustainable plan. Now is the time for OSSA members to engage in discussions and share ideas with board members, either via email or at membership meetings. Together, we can find effective solutions to ensure the future of our trail grooming programs.

Submitted by Jack Reynolds

# Discounts for OSSA Members

**Paulina Lake Lodge** – 15% off food

(541) 536-2240

Open Friday – Sunday beginning December 26, 2024

If you have a group of 10 or more riding during the week, contact the lodge 2-3 days prior to ride and they will open for you for lunch.

**Moto Aspirations** – 10% off parts & 15% off service

16605 Assembly Way Ste 101

La Pine, OR. 97739

(541) 536-1077

**Cascade Motorsports** - 10% off parts

20445 Cady Way

Bend, OR. 97701

(541) 389-0088

**Pro Caliber Motorsports**– 10% off parts & service

3500 N Highway 97

Bend, OR. 97703

(541) 275-6553

**Elk Lake Resort**– 15% off food

(541) 480-7378

**Central Oregon Adventures** – 10% off groups

(541) 593-0339

Show your club or OSSA membership card to receive these discounts.



## JOIN OSSA TODAY

ODOT has cut our budget at OSSA (Oregon State Snowmobile Association) by 30% so we had no choice other than reducing all the club's grooming funds by the same, there is strength in numbers and your support is greatly needed and appreciated.

The other groomers and I are happy to groom and open trails for all users, cross-country skiers benefit from the grooming as do snowmobilers, and here on the Malheur NF we are very fortunate to have nearly zero user conflicts.

Our local club membership is down from past years and has never been supported to the level it could be. I know there are a lot of snowmobilers, as well as X-country skiers who are not members but benefit from our efforts.

Please hit the QR code below and renew your membership or join for the first time! Membership is only \$45.00 per year.

There is a lot of effort that goes on behind the scenes to make these winter trails work, your support is greatly appreciated.

Thanks to Glen Johnston for posting these updates

Cheers & Have a Great Holiday Season

Dave

OSSA Director of Grooming Dist. 6



## About Us

Established in 2004, ArcticFX Graphics is the original online sled wrap brand and has grown to become the go-to graphics company for the snowmobile industry's top athletes and brands.

Our success in the graphics industry stems from years of trial and error working out the perfect combination of materials and processes. Our sled wraps have been rigorously tested by some of the top athletes in the world and are proven to withstand the toughest conditions. We are proud to provide our customers with the best graphics money can buy.



## Arctic FX Graphics Custom Sled Wrap Manufacturer Partners with OSSA

We are excited to announce a State Association Partnership Program with OSSA and ArcticFX Graphics. This program is an incredible opportunity for snowmobile associations to generate additional revenue while providing discounts to their members.

ArcticFX Graphics: Custom Sled Wrap Manufacturer

Established in 2004, ArcticFX Graphics is the original online sled wrap brand and has grown to become the go-to graphics company for the snowmobile industry's top athletes and brands. Learn more about us on our website!

## Benefits of the Partnership Program

- Discount: ArcticFX partner OSSA members will receive a 15% discount on ArcticFX website products.
- Support your association, OSSA through our sales:  
A portion of all sales made through the partner association's unique links will be directly contributed back to Oregon State Snowmobile Association.
- Attend your association's events and unlock bigger discounts on ArcticFX products!

As of today, the states that have joined the program are Nebraska, Utah, Wisconsin and Minnesota and Oregon. If you belong to one of these associations, Turn to the next page for your exclusive code and designated state membership link.



## OSSA is excited to announce that we have partnered with ArcticFx Graphics!

Established in 2004, ArcticFx Graphics is the original online sled wrap brand and has grown to become the go-to graphics company for the snowmobile industry's top athletes and brands.

Learn more about ArcticFx Graphics on their website.

Sled Graphics: [www.arcticfxgraphics.com](http://www.arcticfxgraphics.com)

SxS/UTV Graphics: [www.utvfxgraphics.com](http://www.utvfxgraphics.com)

Moto/SnowBike Graphics: [www.motofxgraphics.com](http://www.motofxgraphics.com)

**Use code OSA15 to receive a 15% discount on your order!**



### **SledWrapR Design Studio 4**

At ArcticFX Graphics, we are continually thinking of new and innovative ideas to make the process of designing, buying, and installing graphics easier than ever. The result of this continuous mission is the SledWrapR Design Studio. The SledWrapR delivers a simple and engaging online design experience that gives you the creative freedom to edit colors of any sled wrap graphics kit in real time. With 80 colors available for each design layer, the SledWrapR puts the power of over 134 quadrillion color combinations in your hands.

Our interactive editor has been rebuilt from the ground up to give you more convenience and control than ever before. Over eighteen years of experience in the industry backs the creation of the new SledWrapR Design Studio 4.

**MATERIALIZER YOUR VISION INTO A REALITY.**

**EMPOWER YOUR CREATIVE SIDE.**

*MAKE IT YOURS.*



**MOTOR SPORTS**  
www.outlawmotorsportsinc.net

504 N.W. 1ST ENTERPRISE, OR 97828

(541) 426-3491 (888)603-1273

OUTLAW@EONI.COM



## Corporate Graphics & Printing LLC

Serving West Coast Business and Industry for 35 years

(503) 936-9592 Customer Service

corporate.graphics.printing@gmail.com

**POLARIS**

Morrow County  
Grain Growers

350 Main Street  
P.O. Box 367  
Lexington, OR 97839

**Ralph Klock**  
Polaris Sales and Finance  
Cell: 503-819-6126  
541-989-8221  
1-800-452-7396  
ralphk@mcgg.net



## SWS Mountain Guides Certified Avalanche Courses Diamond Lake Resort, OR 2025

A-3 Avalanche Level 1

Cost: \$625.00

January 12-14  
February 23 - 25



AMERICAN  
AVALANCHE  
ASSOCIATION

A-3 Avalanche Rescue

Cost: \$295.00

January 11  
February 22  
March 8

A-3 Avalanche Level 2

Cost: \$775.00

March 9-11

**SWS MOUNTAIN GUIDES**  
EST. 1981

Call or Book online:  
swsmountainguides.com

209-753-6556 888-797-6867



(503) 385-8108 1810 Lana Ave NE, Salem, OR 97301

www.dansmotorsports.com

**ARCTIC CAT**

**858**







 OSSA Dealer Of The  
Year 2023-2024 Season

**41 Years in business.**

 ACCREDITED  
BUSINESS  
BBB Rating A+

**Thanks for all your support,  
You have made us what we are today!**



# MT. HOOD POLARIS

**27850 SE HWY 212 BORING, OR 97009**  
Tuesday - Friday 9am to 6pm / Saturday 9am to 5pm

**503-663-3544**

**[www.mthoodpolaris.com](http://www.mthoodpolaris.com)**



## **Announcements**

Another reminder to renew your memberships to OSSA and the Snowdrifters, if you haven't already! Go to the link below and select whether you want an Individual/Family Membership, or a Business Membership. Check the box for the Klamath Basin Snowdrifters Club/OSSA Membership. If you wish to join the Chiloquin Ridgeriders Club also, go down to the "Club Only Memberships" section and check the appropriate box. Go to the bottom of the page to complete the sign-up and payment process.

Klamath Basin snowdrifters membership signup link.  
<https://www.oregonsnow.org/become-a-member/>

From the November club meeting:

- Dave Hernandez elected the new Snowdrifters Vice President – congratulations, Dave!
- It was decided to form a committee to start planning for the possibility of hosting the state convention in 2026 or 2027. The committee will be chaired by Wes French, others volunteering to serve are Wes Adams, Jacob McCarty, Clif McMillan, and Gregg Waterman.
- The club voted to spend \$300 of club funds to put together a gift basket for the OSSA convention. Additional donations of money or gift items are welcome. The proceeds from auction of the basket go to the OSSA legal defense fund.

## **News**

Thanks to Larry, Mike, and Kristi Redd, Clif McMillan, George Gregory, and Dan Riblett for splitting and delivering firewood to the Brown Mountain and Big Meadow Shelters.

In January the club will be receiving a Piston Bully demo cat for several months. This will be sized smaller than the cat used last year, which was wide enough to be difficult to use on some of our trails. Our former cat "Big Red" will also be in action.

Please keep an eye on our website ([www.kbsnowdrifters.org](http://www.kbsnowdrifters.org)) and our Facebook page for the most updated information on club events, pictures, and the grooming report.

Thank you for your support,  
Gregg Waterman – KBSD Newsletter Editor



photo by Clif McMillan



## **Klamath Basin Snowdrifters** **2024/2025 Schedule of Events**

*General meeting locations are to be announced prior to the meeting on Facebook, due to limited seating and options. In addition, locations for club rides will also be announced on Facebook and at the general meeting prior to the ride.*

Here is a link to the OSSA sign up page for the Klamath Basin snowdrifters.  
<https://www.oregonsnow.org/klamath-basin-snowdrifters/>

### **January 2025**

Tuesday 1-14-25: General Meeting 7pm, dinner at 6 PM (location TBA)

Thursday 1-16 through 1-18: OSSA Convention at Diamond Lake / No Host Event

Saturday 1-18-25: Club Ride (details TBA)

### **February 2025**

Tuesday 2-11-25: General Meeting 7pm, dinner at 6 PM (location TBA)

Saturday 2-22-25: Club Steak Feed and club ride (location TBA)

### **March 2025**

Tuesday 3-11-25: General Meeting 7pm, dinner at 6 PM (location TBA)

Saturday 3-22-25: Club Ride (details TBA)

### **April 2025**

Tuesday 4-8-28 General Meeting 7pm, dinner at 6 PM (location TBA)

Saturday 4-19-25 End of Year Banquet at Trappers @ 5pm



NEWS FROM THE PANHANDLE. . . .

Merry Christmas and Happy New Year!!

We have had a few snowmobilers in enjoying the snow. The groomers have started, and things are looking good. Fish Lake has 9 ½ Feet of snow as of the 20<sup>th</sup>. Schneider Meadow is about 70 inches. Town doesn't have much snow, but it's piling up in the mountains.

Thank you to those who have paid their dues. Remember you can pay online at [oregonsnow.org](http://oregonsnow.org).

The club has been somewhat active:

\*\*\*At the first meeting Whitey Bloom turned over the reigns to Jake Roe. Whitey received a nice plaque for his 20 years as President. Many of you know Whitey from all the Poker Runs. I have attached a photo.

\*\*\* In October we picked up trash on Hwy 86 between Halfway and Richland.

\*\*\*The guys went up and cut the tree for the City and set it up. We also put the "stars" up on the telephone poles. It looks like we will have to do battery or solar next year as Idaho Power is taking out the outlets on the poles.

\*\*\*Halfway had their Light Parade and Tree lighting on Dec. 8. We decorated the Sno-Cat and truck and had a good time in the parade, handing out lots of candy. I have included a picture. We decorated pretty good for our first year and already have plans for next year.

\*\*\*The "Are You Beeping" stations went up a couple weeks ago. Duane & Jason said they won't fall down.

\*\*\*Dec 15 was our annual Christmas Dinner. 27 members had a good prime rib dinner at Sara's Restaurant in Richland.

The POKER RUN & RAFFLE will be FEBRUARY 16<sup>TH</sup>, 2025. Get your reservations and plan to attend. There is the Halfway Motel, Pine valley Lodge, Cornucopia Lodge and many Bed & Breakfasts (Airbnb's).

Submitted by Mary Herold, Secretary/Treasurer  
Panhandle Snowmobile club





**CHRISTMAS TIME IS HERE**

We had 21 members attend our Nov. Thanksgiving dinner/meeting. Thanks to all that attended.

Next meeting will be our Christmas gift exchange/dinner which we usually get a good attendance. If you want to participate, make sure you bring a gift. If you don't want to, just come for the food and company. The gift amount is suggested to be no more than \$20. Hope to see you there.

We still only have 67 family members that have joined up so far this season. Still a long way from the 100 members from last season. Remember the money to OSSA helps fight for our trails to stay opened in our forests. There is an application that is in this newsletter or go online to [oregonsnow.org](http://oregonsnow.org) and join there.

At Nov. meeting, the members finalized who they wanted to have for our charity donation for Poker Run this season. It will be **Best Friends of Baker City and SAR (Baker County Search and Rescue)**. We will donate at least 25% of the net proceeds from our Poker Run.

I have purchased another dinner of \$150 for the Baker County Community Senior Center and should come out sometime in January. As soon as I know the day, I will get it out to the membership. For seniors it costs \$5 and for others it's \$7.50 I think. They have great food for sure. Elaine Livran was the member that represented our club at the last dinner. Thanks Elaine.

Hope to see you all at the December dinner/gift exchange/meeting.

**2024 – 2025 CALENDAR OF EVENTS**

**Regular Monthly Meetings (subject to change)**

POTLUCK starts at 6:00 PM at **Sumpter Community Center**. Bring your own-table service and drinks. **The Club meeting starting at 7:00 PM on the third Thursday of each month from September through April.** If you can't make the potluck, you can still come for the meeting.

Dates and times are subject to change so please check the schedule for each month. **Regular Monthly Meetings (subject to change)**

- \* **Thursday Dec. 19, 2024, 6:00pm**
- \* Thursday Jan. 16, 2025, 6:00pm
- \* Thursday Feb. 20, 2025, 6:00pm
- \* Thursday March 20, 2025, 6:00pm
- \* Thursday April 17, 2025, 6:00pm

**Special Events**

- **Poker Run Feb. 15, 2025**

**CLUB NEWS**

**President's Corner**

Holy Moly, it's December already? I'm sure we're all on the same page, we need snow. If not for our winter recreation, but certainly for the summer wildfire threats and of course rancher and farmer irrigation. So far, our only big event scheduled is the Walk-About Poker Run, Presidents Day weekend. Many of our Active Membership (club meeting attendees) don't sled anymore. These folks are committed to the Walk-About Poker Run, and we use random volunteers to man town stations, usually the same one's every year. More on that later.

Having said that, the Trail Poker Run is up in the air for two reasons. Snowpack and Station Volunteers. We can get away with only 3 trail stations maned for the Trail Poker Run. However, I'd like to have 5 stations maned. It's a hustle to get your cards marked but it's do-able. You must total 7 stations to give you poker advantage, the balance in town.

The dilemma, having enough people to rotate and keep this going year after year. We can't expect the same folks to man the trail stations every year. Step up and donate your time. Two folks per station is desired. Decision on that later. Commit and shoot me email to stand a station by February 1st, ([pdxbogie@gmail.com](mailto:pdxbogie@gmail.com)).



# Sumpter Valley Blue Mountain Snowmobile Club



Troy Pointer, Matt Case, Kathy Reedy at Cable Cove



Matt Case at Cable Cove



Troy Pointer, at Cable Cove



Gary Olson at Cable Cove



Troy Pointer,



Troy Pointer, Matt Case, Kathy Reedy at Cable Cove



Unless I'm trumped by the Active Membership, I will call it February 2nd, as "lack of participation". Last minute cancellations after you have committed could kill the Trail Poker Run. We can hold off on calling it for snow until we get closer to President's Day weekend (say a weekend before).

Mike

### Volunteers Hours Needed

I need **members only** volunteer hours, that you do, thru out each month to report to OSSA. Please let Jane know, thru email [Svbmsc-secytreas@outlook.com](mailto:Svbmsc-secytreas@outlook.com) or you can text me at 208-739-3498. We report it as Charity and it helps with funding for new groomers, fuel, new groomer sheds, etc. If you need info on what can be counted, please call me.

#### **Membership:**

A new season starts September 1<sup>st</sup>. Even if you don't have a snowmobile, you might have an ATV or just want to drive around the roads to enjoy the great outdoors, remember the money that goes to OSSA is for a good cause. It keeps our trails and forest roads open for all of us to use, ATV/UTV's, Snowmobiles. We can't let them shut it down.

#### **Grooming/Trail Cleaning Report**

Nothing to report currently. Just waiting for more snow.



Dallas Buck, Jim Valentine, Richard & Dawn Kludt, John & Elaine Livran Cable cover

### LINKS TO ISSUES OF INTEREST TO SNOWMOBILERS

#### **American Council of Snowmobile Associations**

<http://www.snowmobilers.org/>

#### **Blue Ribbon Coalition**

<http://www.sharetrails.org/>

#### **Blue Mountains Forest Plan Revision**

<http://www.fs.usda.gov/goto/BlueMtnsPlanRevision>

#### **Forest Access for All**

<http://forestaccessforall.org/>

#### **OPRD Statewide Trails Plan**

[http://www.oregon.gov/oprd/Trail\\_Programs\\_Services/Pages/Trail-Plans.aspx](http://www.oregon.gov/oprd/Trail_Programs_Services/Pages/Trail-Plans.aspx)

#### **Oregon State Snowmobile Association**

[oregonsnow.org](http://oregonsnow.org)

#### **Wallowa Whitman NF Travel Management Plan**

[http://www.fs.usda.gov/detail/wallowa-whitman/landmanagement/projects/?cid=fsbdev7\\_008909](http://www.fs.usda.gov/detail/wallowa-whitman/landmanagement/projects/?cid=fsbdev7_008909)

### **SNOWMOBILE NEWS**

Go to [oregonsnow.org](http://oregonsnow.org) for their news updates and where you can join the club's memberships.

#### **SVBMSC Newsletter**

If you have questions or suggestions about content or advertising in the SVBMSC newsletter, please email the Secretary/Treasurer Jane Leatherman at [svbmsc-secytreas@outlook.com](mailto:svbmsc-secytreas@outlook.com).

*The Sumpter Valley Blue Mountain Snowmobile Club Newsletter is published monthly, from September through April and from May through August as is deemed advisable by club officers.*

- |                     |                 |
|---------------------|-----------------|
| President           | Mike Bogart     |
| Vice President      | Elaine Livran   |
| Secretary/Treasurer | Jane Leatherman |
| Groomer Chair       | Jim Sheller     |
| Co / Groomer Chair  | Wes Christensen |
| Director            | Wes Christensen |
| Director            | Gary Applegate  |
| Director            | Dale Demaris    |
| Director            | John Livran     |
| Advisor             | Jim Sheller     |
| Poker Run Chair     | Ron Shapland    |
| District 6 Director | Tim Holly       |

The newsletter will be sent by email or USPS to all members in good standing.





The Lodgepole Dodgers participated in the 5th annual central Oregon sled swap at Pro Caliber of Bend. Lodgepole Dodgers was the only club that participated this year. Had many used snowmobiles and parts there for sale. Everyone had a good time. Pro Caliber raffled off some very nice prizes.

Big thank you to clubs grooming chairman, Jack Reynolds. Jack rebuilt all our trail sign poles to make it much easier to install trail signs. Jack also has installed trail signs, bring on the snow.

Our grooming team this year consists of 4 members. Jack Reynolds grooming chairman, Chuck Ehlert, Dennis Wallan and Daniel Maestas. Thank you to all of them for volunteering their time to groom the trails for all of us.

Club's Christmas party this year was held at the La Pine Moose Lodge. Saturday December 14, 2024. WE enjoyed dinner a short meeting and a white elephant gift exchange.

Paulina Lake lodge is offering 15% discount on food order. Show your OSSA membership card to receive the discount. Lodge is only open Friday, Saturday & Sunday. If you have a group of 10 or more riding during the week, give them a 2-3 day notice and they will open for lunch. Lodge number is (541) 536-2240.

Just a reminder the Best Western Newberry Station in La Pine is offering a special rate to snowmobilers. Between November 1, 2024 – March 1, 2025 you can get a single queen room for \$105.00 plus tax a night. When making a reservation please mention Lodgepole Dodgers to receive the special rate.

Let's all do our snow dance!  
Thank you,

Roger Ellis  
President  
Lodgepole Dodgers  
lodgepoledodgers72@yahoo.com  
(503) 475-8095



If you would like to join and support the La Pine Lodgepole Dodgers and the grooming efforts of the Paulina Lake trail system. Please scan the QR code to do so.

Annual membership to the Lodgepole Dodgers is only \$20 a year. To be a member you must also be a member of the Oregon State Snowmobile Association (OSSA). Annual membership to OSSA is only \$35 a year.

Thank You





# CASCADE MOTORSPORTS

BEND, OREGON

*Happy  
Holidays*



WEBSITE



**POLARIS**

**KTM**

**TIMBERSLED**

 **GIFT THE  
OUTDOORS**  
HOLIDAY SALES EVENT



**BUY A SLED IN DECEMBER  
FOR THE CHANCE FOR US  
TO PAY YOU BACK!**

**5 LUCKY WINNERS**

**UP TO  
\$3,000 OFF\***

SELECT 2023 MODELS DURING POLARIS  
GIFT THE OUTDOORS SALES EVENT

\*MSRP. EXcludes taxes, license, and other available equipment. Excludes dealer-installed accessories. Offer good in the U.S. only. Offer ends 12/31/23. See dealer for details. ©2023 Polaris Inc.

**POLARIS**

# ski-doo®

PRO CALIBER BEND  
YOUR LOCAL  
POWERSPORTS  
DEALER

**PRO CALIBER**  
www.ProCaliberBend.com

3500 N HWY 97 | BEND, OR | (514) 641-5151

## LANDOWNERS DESERVE YOUR RESPECT



### Protect Land Use Privileges

*•Stay on the Trail! •If you Don't know - Don't Go.*



## TUCKER SNO-CAT®

CORPORATION

*Building Quality Since 1942.*

No road too steep...

*NO SNOW TOO DEEP.*



SCAN THIS CODE

**Made in  
the USA!**

**Call: 866-SNO-CAT1**  
**or 541-779-3731**  
**www.SNO-CAT.com**

*Experience the  
4-Track Advantage!*

2872 S Pacific Hwy • Medford, Oregon 97501 • Fax: 541-779-3735



# FOUR-ON-THE-SNOW

NO SNOW TOO DEEP...NO ROAD TOO STEEP

*Happy New Year 2025!*



## Service Department Notes: **WHEEL SPINDLES**

Tucker Sno-Cat® vehicles are essential for traversing tough, snow-covered terrain, often used for snow grooming, search and rescue, and remote exploration. To maintain optimal performance, it's crucial to regularly inspect and maintain the wheels. It is recommended that the wheels be pulled every other year for a thorough inspection and cleaning. This helps identify any wear or damage early, preventing costly repairs. Additionally, applying anti-seize lubricant to the spindle ensures they remain free from corrosion, making it easier to remove or adjust the wheels when needed. Regular maintenance keeps your Tucker Sno-Cat® vehicle running efficiently and prolongs its service life.

As always, feel free to call us at the factory with any questions. We are here to help!





*Holiday*  
**MOODBOARD**



*Happy Holidays*  
*from*  
*Tucker Sno-Cat®*  
*Corporation*





## **To Blade or Not to Blade? (The answer is always to blade.)**

Using the blade on a snowcat effectively is crucial for grooming, clearing trails, or leveling terrain. If you didn't learn how to groom by using the blade, don't worry – it's something everyone can pick up with just a few practice runs. Remember the old adage: *practice makes perfect*. Give yourself a chance, try it out, and you'll probably be surprised how much of a difference it really makes.

The first step is to understand the controls. This is typically a joystick or lever that raises or lowers the blade. A nice feature of all the Prinoth Stage V vehicles is that they all contain the same operating system, which makes going between models effortless, boosting operator confidence. The ergonomic joystick hand rest allows for hours of smooth, comfortable operation.

Here are some tips to keep in mind when using the blade and to help to increase your comfort level with the tool.

- The angle of the blade adjusts (side-to-side movement). Depending on that angle, you can push snow to the side of the trail or straight ahead.
  - For general snow pushing, set the blade angle to direct the snow.
  - For more precise grooming, adjust the angle as needed based on where you want the snow to end up.
- Adjust the blade angle to control the direction of the snow.
  - For wider coverage, angle the blade slightly. This will push the snow to the outside of the blade making the trail a bit wider.
  - For more precise control, keep it straight.
- Tilting the blade up or down allows you to change its pitch. This affects how the snow is cut and moved.
  - Sometimes you'll want a higher angle, allowing the snow to roll inside the blade. Other times, in different snow conditions, you'll use a lower angle to get the snow to roll. This takes a bit of trial and error to figure out.
- Adjust the blade to the desired height, usually slightly above the ground. The blade should glide just over the snow to avoid unnecessary wear or snagging debris that is sticking up on the trail.
  - Gradually lower the blade to make contact with the snow.
  - Avoid dropping it too quickly to prevent sudden resistance or a divot in the trail.
- While grooming, lower the blade, flat position and move slowly to create an even surface.
  - Make multiple passes if needed, adjusting the blade height for consistency.
  - Remember, you can always back up and fix it.
- When clearing trails, adjust the blade angle to push snow to the sides.
  - Ensure you cover the entire width of the trail with each pass.
  - If you encounter rocks, stumps, or other obstacles, raise the blade to avoid damage. Adjust the blade position carefully when maneuvering around these obstacles.
  - Use the tilt control to adjust how the blade interacts with uneven surfaces or obstacles.

*Prinoth*

# PROUD TO BE YOUR TRAIL GROOMING PARTNER IN **OREGON**

## REACH OUT TO YOUR LOCAL SALES REP

Nathan Vandersluis  
[nathan.vandersluis@prinoth.com](mailto:nathan.vandersluis@prinoth.com)  
(541) 948-0860

SCAN THIS CODE  
TO LEARN MORE!



- Use smooth and controlled movements to push snow allowing the blade to work efficiently. Let the machine do the work!

Spend time operating the blade in various snow conditions to understand how different settings affect performance. Adjust techniques as needed based on your experience, refine your techniques to improve efficiency and results. By mastering the use of the blade on your snowcat, you'll enhance your ability to manage snow and maintain trails effectively, whether you're operating in a recreational or professional setting.

If you want to learn more, reach out to your local Prinoth Sales Representative, Nate Vandersluis, at [Nathan.vandersluis@prinoth.com](mailto:Nathan.vandersluis@prinoth.com) or (541) 948-0860. He'll be happy to take a ride, provide training, and bring a demo to your club.





#6,400 miles  
of volunteer  
groomed trails

# A Day in the Life of a Volunteer Groomer

Did you know that OSSA has 24 clubs in Oregon and that all 24 clubs volunteer to groom the snowmobile trails?

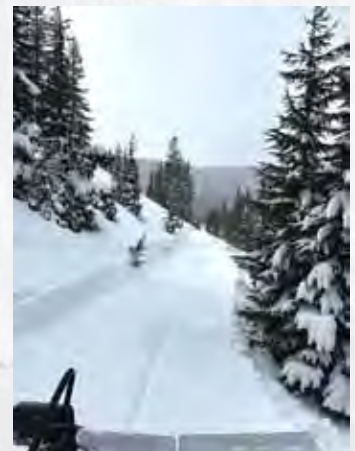
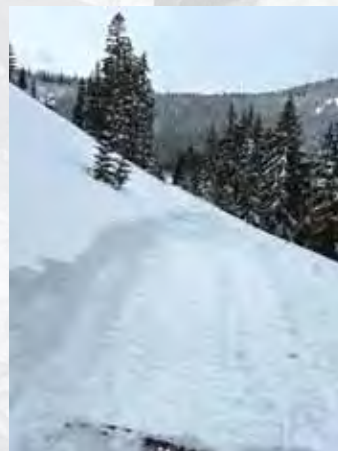
## Typical Grooming Day:

- 5:00 am** Wake up.
- 6:00 am** Drive 90 minutes up to the mountain.
- 7:30 am** Prepare the Grooming Machine for the day.
- 8:00 am** Begin Grooming the trails.
- 8am to 6pm** Groom the trails, remove fallen trees, remove moguls, make roads through snow drifts.
- 6:00 pm** After grooming 50 to 60 miles return to Groomer Barn and begin refueling and cleaning the Groomer.
- 7:00 pm** Head for home.
- 8:30 pm** Arrive home and crash.

Did you know that the best way to ***“THANK YOU”*** to a groomer volunteer is to renew your membership every year?

Many OSSA members join every club in every area that they ride just to say, ***“THANK YOU”!***

Oh yeah, if you see a Groomer Volunteer be sure to shake their hand and say ***“THANKS”***.



**WHERE PRECISION**



**MEETS PERFORMANCE**

**Piston Bull<sup>®</sup>**

For parts, service, and sales, call  
our Oregon office:

503-783-1935

Or contact Colin Hales at:

503-550-5941





# **The PB100E is Coming to North America This Winter**

By Liz Worgan

This winter, PistenBully's PB100E machines will operate on North American soil for the first time. The PB100E is a groundbreaking technological advancement in the snow groomer world. Unlike competing products, the PB100E has an all-electric drive – the first of its kind. It is a maneuverable, capable machine that was designed with trail grooming in mind.

The stats for the PB100E speak for themselves: the machine is 100% emission-free, with an increase of 20% efficiency compared to an electric motor, and a 20% increase in range per rapid charging cycle. It takes about 2 hours for the machine to charge and, on average, allows for 3 hours of operation.

Development of the PB100E aligns closely with the trends and goals of the snow grooming industry. The environment – and working to preserve natural snowfall – is crucial for the success of our business and our customers. Innovative technologies such as the all-electric hydrostatic drive help push snow grooming to a higher standard, a goal that PistenBully is consistently aiming for.

Inside the cab of the PB100E, you'll find the standardized features that you know and enjoy, allowing for ease of operation. You'll be met with the same intuitive interfaces and the same level of adaptive control for your blade and tiller.

The PB100E was designed with trail and Nordic grooming in mind. North America's first PB100E will be headed to Idaho's Blaine County Recreation District in early 2025, where it will be used to service one of the premier Nordic destinations in the United States. It is sure to be a popular machine for snowmobile trails, as well. Demos can be booked through your regional PistenBully representative, Colin Hales.

The PB100E is a prime example of PistenBully's commitment to both innovation and sustainability. Now with the leading electric machine on the market, we're proud to be taking the next step forward in snow grooming technology.



**ELK LAKE**  
RESORT  
BEND, OR

[elklakeresort.net](http://elklakeresort.net)



## WINTER HOURS

### Non-Holiday Weekends Thursday – Sunday

Thursday 11 am – 7 pm

Friday 11 am – 8 pm

Sat 9 am – 8 pm

Sun 9 am – 6 pm

\*Front Desk/Retail/Gasoline Service open daily at 10 am

### MLK Weekend and President's Day weekend

Thursday thru Monday

### Holiday Weeks

December 19 thru Jan 5th (Open Daily)

Monday – Thursday 11 am – 7 pm

Friday 11 am – 8 pm

Sat 9 am – 8 pm

Sun 9 am – 6 pm

\*On Thanksgiving Day, Christmas Eve, and New Year's Eve the Lodge and Restaurant close at 3 pm for Private Holiday Dinners

\*Advanced reservations required

\* Snowmobile and Snowshoe Rentals – 10 am – 5 pm



BEST SKIING SERVICE – DESIGNATED BY THE MOUNTAIN



BEST SKI RENTAL – DESIGNATED FOR BEST SKI RENTAL SERVICE BY THE MOUNTAIN



BEST SKI RENTAL SERVICE – DESIGNATED FOR BEST SKI RENTAL SERVICE BY SOURCE MOUNTAIN



BEST SKI RENTAL SERVICE – DESIGNATED FOR BEST SKI RENTAL SERVICE BY THE MOUNTAIN



BEST SKI RENTAL SERVICE – DESIGNATED FOR BEST SKI RENTAL SERVICE BY THE MOUNTAIN



BEST SKI RENTAL SERVICE – DESIGNATED FOR BEST SKI RENTAL SERVICE BY THE MOUNTAIN

We are Open to Mid-March for Winter Season



[www.paulinalakelodge.com](http://www.paulinalakelodge.com)



Dec 31st 8am to 8pm Breakfast, Lunch and Dinner.

*Snowmobile from the front door of your cabin*

## Paulina Lake Lodge

22440 Paulina Lake Road

La Pine, OR 97739

[www.paulinalakelodge.com](http://www.paulinalakelodge.com)

541-536-2240

[paulinalakelodge@outlook.com](mailto:paulinalakelodge@outlook.com)

Opening day  
after Christmas Dec 26th  
Until Mid March

Sno cat shuttles

Restaurant and Bar Hours

Friday 11am to 7pm

Sat 11am to 8pm

Sunday 11am to 5pm

Saturday night

Our Famous Prime Rib

5pm to 8pm

Cocktail Bar

Bloody Marys Hot Drinks





**SAFE RIDERS HAVE MORE FUN!**



*Stay educated on the basics of snowmobile safety at [gosnowmobiling.org](http://gosnowmobiling.org).*



The Snow is starting to fall and activities are ramping up on the mountain, **Tollgate Trailfinders** hosted two snowmobile safety classes the weekend of November 2-3 with 33 kids signed up.

Kids of all ages had a good time learning about the operation of a snowmobile. A Big thank you goes out to OSSA Vice President Tj Reilly for putting on multiple classes around the state that weekend.





YOUTH OPERATORS  
NEED SAFETY  
TRAINING

---

KEEP THEM SAFE.  
GET THEM TRAINED.

This message brought to you by the American Council of Snowmobile Associations  
[www.snowmobilers.org](http://www.snowmobilers.org)

# Are you New to snowmobiling ?

Do you want to learn how to ride Safely ?

Do you want your kids under age 16  
to be able to ride Legally ?

**Oregon Snowmobile Law says:**

ORS 821.150 drivers license or permit required. Class D Fine up to \$250

**We can CERTIFY kids 16 and under  
without a driver's license.**



## **The OSSA Safety Program**



Below is a list of current state approved snowmobile safety trainers.

Please contact your local trainer to get your kids 16 or younger without a drivers license trained and obtain their snowmobile safety certificate now.

<b>NAME</b>	<b>LOCATION</b>	<b>PHONE</b>	<b>EMAIL</b>
TJ Reilly	Portland	503-804-2075	treilly@oregonsnow.org
Brent Younker	Boring Or	503-695-2911	b_totalrental@yahoo.com
Randy James	Enterprise	541-426-3854	
Dennis Jordan	Medford Area	541-826-6326	Djordan@oregonsnow.org
Lyle Klenski	John Day	541-620-1324	
David Miller	Klamath Falls	541-884-2423	DavesATVrepair@gmail.com
Glenn Shirek	Roseburg	541-673-3787	
John Vogel	Hood River	541-386-5584	Jvogel@oregonsnow.org
Maria Sammons	Salem	503-569-5552	cm97383@gmail.com





# SNOWMOBILING IS A FUN FAMILY ACTIVITY



**Join us today!**

# WINTER WONDERLAND



*Winter Rates for Cabin & RV Sites Everyday!*

**Snowmobiling • X Country Skiing • Snowshoeing • Ice Fishing**

**• Resort Open Thursday Through Monday • New Menus & Offerings this Winter**

**ABOUT 40 MILES FROM KLAMATH FALLS, ASHLAND AND MEDFORD**

**TOLL FREE 866-201-4194 [WWW.LAKEOFTHEWOODSRESORT.COM](http://WWW.LAKEOFTHEWOODSRESORT.COM)**

**Lake of the Woods**  
MOUNTAIN LODGE & RESORT

**HOLIDAY HOURS OF OPERATION**

**LAKEHOUSE RESTAURANT**  
 THANKSGIVING 11/28 - 10AM - 6PM  
 SERVING BUFFET ONLY. LAST SEATING AT 5PM  
 CHRISTMAS EVE 12/24 - 11AM - 6PM  
 SERVING BUFFET ONLY. LAST SEATING AT 5PM  
 CHRISTMAS DAY 12/25 - 9AM - 3PM  
 SERVING REGULAR RESTAURANT MENU  
 NEW YEARS EVE 12/31 - 3PM - 9PM  
 SERVING BUFFET ONLY. LAST SEATING AT 8PM  
 NEW YEARS DAY 1/1/25 - 9AM - 7PM  
 SERVING REGULAR RESTAURANT MENU

**GENERAL STORE**  
 THANKSGIVING 10AM - 6PM  
 CHRISTMAS EVE 11AM - 6PM  
 CHRISTMAS DAY 9AM - 4PM  
 NEW YEARS EVE 9AM - 5PM  
 NEW YEARS DAY 8AM - 5PM

**MARINA**  
 7 DAYS A WEEK 9AM-6PM\*  
 \*CLOSED CHRISTMAS DAY

**PIZZERIA**  
 THANKSGIVING 9AM - 6PM  
 CHRISTMAS EVE 9AM - 6PM  
 CHRISTMAS DAY - CLOSED  
 NEW YEARS EVE 9AM - 6PM  
 NEW YEARS DAY 9AM - 6PM

**20** **24**

**New Year's Eve Buffet**  
**3pm - 9pm**

\$45/Adult, \$21/Children under 12,  
 Under 5 Free

Carved Prime Rib Au Jus  
 Herb Stuffed Pork Loin  
 Shrimp Scampi  
 Smoked Tri-Tip  
 Coconut Shrimp with Dipping Sauces  
 Baked Potato Bar  
 Sautéed Asparagus  
 Tri-Colored Carrots  
 Meat & Cheese Board  
 Pear Brie & Mixed Green Salads  
 Seafood Bisque  
 Assorted Rolls  
 Amaretto Chocolate Mousse  
 Assorted Cheesecakes

Complimentary Glass of Champagne\*  
 \* Must be 21 years old

Live Music In The Upstairs Lounge  
 With the Marty Combs Trio 5pm-9pm

Call now for reservations  
**541.949.8300**



## GREAT SNOWMOBILE GETAWAY DEAL

We were sent this information from Elizabeth Graves and she is the Sales Manager for Springhill Suites in Island Park, Idaho. They are a prime-time location for snowmobiling, and have a deal for snowmobilers that come to the area. They sent us a rate code YRN8 that secures \$109.00 per night at their hotel.

Here is more information about this location:

Our hotel has 111 rooms which are all suites. This means the rooms are spacious and include a large sofa, office space, king or double queen rooms, many rooms have a large walk-in closet, mini refrigerator, TV, and free Wi-Fi. This is our website so you can check the property out. <https://www.marriott.com/en-us/hotels/idasl-springhill-suites-island-park-yellowstone/overview/>

SpringHill Suites By Marriott Island Park Yellowstone | Marriott Bonvoy  
 Book Directly at SpringHill Suites By Marriott Island Park Yellowstone & Get Exclusive Rates.  
 Plan Your Next Vacation or Business Trip at Our Hotel.

[www.marriott.com](http://www.marriott.com)

We have parking for trailers and snowmobiles, you can ride right out of the hotel onto trails. Our amenities include complimentary hot American breakfast. This includes sausage, eggs, bacon, bagels, yogurt, fruit, mini waffles, etc. This is available every morning. We have a heated indoor pool and oversized outdoor hot tub that overlooks Henry's Fork River. There is a conference center as well. We have had safety demonstrations, public showcasing's, avalanche awareness meetings, etc. We have a bar/restaurant inside of the hotel with a pool table.

We do close the bar on Wednesday's and Thursday's, but you can always ride to local restaurants for a meal.

Places to eat:

- Lakeside Lodge 7 miles by trail from the hotel 208-558-9770
- Ponds Lodge 5.6 miles along HWY 20 by trail 208-558-7221
- Trout Hunter 10 miles by trail along HWY 20 208-558-8006
- The Pines 4 miles by trail from the hotel -unreliable hours 208-558-0192
- Cafe Sabor -walking distance 208-558-9300
- Connies Restaurant 1.9 miles by trail from hotel-unreliable hours call ahead 208-558-6987
- Meadow Creek Lodge 7.9 miles only by snowmobile-closed on W and TH in the winter 208-351-2787

There are over 950 miles of groomed trails, the trails are touted as one of the best-groomed trails in the world (maybe you would beg to differ). When talking with people from other states they have brought up how well Island Park takes care of their trails. They groom 600 miles of the trails every single night no matter how bad the weather is.

At this time if someone in your group is interested in booking or has questions, please have them call my cell at 435-632-9436.



**\*JOIN US FOR MOON COUNTRY SNOWBUSTERS  
SNOWMOBILE POKER RUN**

**SATURDAY, JANUARY 11TH, 2025**

**REGISTRATION WILL BE AT THE WANOGA SHELTER  
BREAKFAST STARTS AT 9AM, POKER RUN STARTS AT 10AM,  
LAST RIDER OUT BY 11am TOKENS TURNED IN BY 2PM  
RIDERS CAN DEPART AT ANY TIME**

**\$10 PER HAND**

**HERE ARE THE DETAILS:**

**REGISTRATION STARTS AT 9 AM AT WANOGA SHELTER  
THIS IS NOT A RACE!**

**YOUR TIME BETWEEN STOPS DOES NOT MATTER!**

**ENJOY THE RIDE-BUT PLAY SAFE FRIENDS!**

**THE BEST POKER HAND WINS**

**CASH PRIZES WILL BE AWARDED TO THE 1st, 2nd & 3rd PLACE  
HAND.**

**AWARDS AND RAFFLES TAKE PLACE AT WANOGA @ 3PM**

**PARTICIPANTS MUST BE PRESENT TO RECEIVE ANY  
WINNINGS!**

**CHILIDOG HOLIDAY FEED AFTER FREE TO ALL MEMBERS**



**Our Moon Country Snow Busters meeting at the Elks in Bend, the 2nd Monday of every month.**

We did a toy drive and gave out raffle prizes to everyone who brought a toy. Raffle prizes were \$100 to use at Cascade Motorsports, we gave away 2 sweatshirts, a t-shirt and 3 hats!

**If your a member of Moon Country and bring a friend who signs up as a member, you get a free hat of your choice!**

**New Year's party and poker run event will be January 11th** starting at 9:00 at the Wanoga Snow shelter, with breakfast and lunch later when we do prizes for winners and raffles. More detailed info to come. Follow us on Facebook and if you, are a Moon Country Snow Buster member, you will get an email sent to you.

**Photos from the Know Before You Go free avalanche seminar presented by: Central Oregon Avalanche Center at Cascade Motorsports**

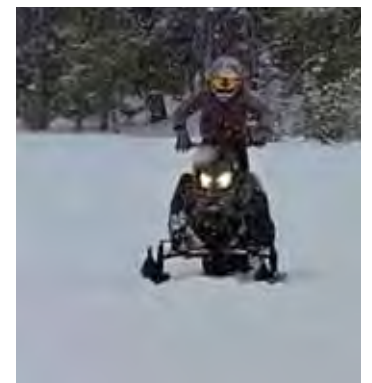




Moon Country Snowbusters Grooming Team



Here are pictures from the meeting with Selina speaking on behalf of the Dog Sled Derby happening on the weekend of Feb. 28th. She brought in one of her sleds to show us.



Cascade Motorsports had their trailer up at Dutch man flats testing out the snow and new demos.

# A New Era for Hood River's Largest Toy Store

*New ownership at powersports and bikes store*



**Story and Photos by HRP**

**P**lease welcome Hood River Powersports & Marine and Post Canyon Bikes to Hood River! Established in 2024 and owned and operated by Jamie Hull of Mt. Hood & Parkdale, they are bringing a new kind of adventure and community to the Gorge.

At HRP and Post Canyon Bikes, they're here to help families and folks make the most of their time outdoors, whether you're enjoying the outdoors solo, with friends, or exploring with loved ones. Everything they offer is designed to help you enjoy life, build your skills, and recharge — while always delivering the best service and support to keep the adventure going.

In just a few months of ownership, Jamie has already made huge changes to the dealership, including a major rebrand (with new signage coming soon!). They are also carrying even more world-class brands, such as RH Fishing boats, G3 Boats, Kawasaki, Sherco offroad and trail bikes, Kove Adventure and Rally bikes, CFMOTO UTVs, ATVs & motorcycles, Arctic Leopard Electric motorbikes, and Kayo pit bikes and ATVs.

For all you boaters and fisherman out there, they have big plans in the works, bringing 20+ years of boat design and building experience to ensure HRP becomes the go-to store in the Portland and Gorge areas. The Big Fishing store launches early 2025! New staff from the Hood River area — with professional expertise in moto and mountain biking — have

also joined the team to provide even better support and service for these exciting outdoor sports.

Post Canyon Bikes, located right next door, focuses on e-bike sales and service, featuring the largest and most capable manufacturer of e-bikes in the world: Yamaha. Most people

are not aware that Yamaha has built more e-bikes than any other manufacturer in the world, and just recently began to focus on the US market with the introduction of the very best e-bikes available. Post Canyon Bikes also sells RFN and RAWRR (similar to Surron), with even more brands coming soon!

Jamie Hull is a Mechanical and Marine Engineer, life-long gearhead and outdoorsman. So naturally, he saw this opportunity as the holy grail of combining many of his outdoor activities and passions under one roof, as well as to build a venue and share this experience with the Hood River community he loves so much.

Formerly Mid-Columbia Marine & MotorSports (MCM), this company has been in the Hood River's boating, fishing and powersports culture for more than 30 years, and HRP & Post Canyon Bikes is excited to continue this legacy! A big shout out to Jim Drennen for making this possible!



*Jamie Hull, Owner*

*HRP and Post Canyon Bikes provides sales, service and parts support for powersports, MTB and road bikes, e-bikes, marine and fishing. Hood River PowerSports & Marine and Post Canyon Bikes are located at 3335 Cascade Ave. in Hood River. For more info, visit our website at [www.hoodriverpowersports.com/](http://www.hoodriverpowersports.com/) or give us a call at (541) 386-2477.*

- ✓ Watersports
- ✓ Post Canyon Bike
- ✓ Full Service Bike Shop
- ✓ Sales Service
- ✓ Boat Re-Power
- ✓ Fishing

# THE GORGE'S **BIGGEST** TOY STORE



Check out our Website!



**HOOD RIVER POWERSPORTS & MARINE**

**POST CANYON BIKES**

3335 Cascade Ave. • Hood River  
 HOODRIVERPOWERSPORTS.COM | 541-386-2477



## COUPON SPECIALS



**\$3,400**  
Discount

New Yamaha  
Moro E-Mnt  
Bike

While Supplies Last

**\$1,800**  
Discount

New Yamaha  
Crosscore  
E-Tourbike

While Supplies Last

**\$2,000**  
Discount

New Yamaha  
Mountain Max  
Snowmobile

While Supplies Last

**\$2,500**  
Discount

New Sherco  
300SEF

While Supplies Last

**\$3,000**  
Discount

New RH Boats  
Pro-V16 with  
40HP

While Supplies Last

**\$350**  
OFF

3,000 watt  
Generator

While Supplies Last





## Oregon State Snowmobile Association

# OSSA Membership

We encourage everyone to join their local snowmobile club which automatically includes an Oregon State Snowmobile Association membership.

You can be a member of OSSA without joining a local club. However, please consider joining the clubs where you ride in Oregon. These clubs groom and maintain the trails that you enjoy riding on.

If you live in another state or for some other reason don't want to join a local snowmobile club you are welcome to become an OSSA only Member.

## Who Can Join?

Anyone who enjoys the outdoors can be a member including cross country skiers, snow shoers, dog sledders, snow bikers and of course snowmobilers.

## Why should I join?

Our mission is to protect and enhance the sport of snowmobiling. We work closely with the Forest Service and BLM to keep areas open, resolve conflicts, and to provide the quality snowmobiling that Oregon is famous for. We work with local, state, and federal legislators to protect the rights of all snowmobilers. We fight any damaging legislation, and we support legislation that helps our sport. We coordinate with industry, national and international snowmobile groups to share knowledge, provide mutual support, and protect the sport we all love so dearly.



# Assure The Future of Snowmobiling

Become a member of your local Snowmobile club.



[SNOWMOBILERS.ORG](http://SNOWMOBILERS.ORG)



LOCALLY OWNED AND OPERATED  
EST. 2023



WE'LL GET YOU THE MOST MONEY  
FOR YOUR VEHICLE GUARANTEED!

■ Free Instant Cash Offer

■ 72-hour Live Auction

■ Fast, safe, and secure

■ Only pay if it sells

★ 4.9 ON GOOGLE



**SELL TODAY**

**160+ REVIEWS**

☎ (360) 718-7424

🌐 carsolve.com



**500+ VEHICLES SOLD**

# CASCADE MOTORSPORTS

BEND, OREGON



WEBSITE



**POLARIS**

**KTM**

**TIMBERSLED**

**GIFT THE OUTDOORS**  
HOLIDAY SALES EVENT

**\$50 OFF** ANY \$250+ OR **\$150 OFF** ANY \$750+  
PURCHASE IN PARTS, ACCESSORIES AND APPAREL

**POLARIS**

**WORK SMARTER.  
NOT HARDER.**

UP TO  
**\$3,000 OFF\***

SELECT  
RANGER MODELS

**EXPLORE INVENTORY**

**POLARIS**



Another great and productive snowmobile club work weekend involved hanging diamonds and clearing trails/roads. Thank you to everyone who helped; we couldn't have done it without you. A huge thank you to Tim Holly for the great dinner the crew enjoyed, and an equally huge thank you to Chris and Julie Larsen for all the extra work they put in!!





Thank you to everyone who has renewed their membership. Our volunteers really appreciate your support!

Our volunteers have been very busy getting ready for the season. We had a crew take out wood to our wood locker at our remote Warm Springs Cabin. This cabin is 20 miles from Skyline Sno-park and is only accessible by snowmobile in the winter time. The key for the wood locker is the same key for the wood storage at Skyline Sno-park. We are currently using a yellow key. If you don't have a key, let me know and I can mail a key to you. In addition, our volunteers have been very busy getting our sno-cat ready for the season, servicing the generator, repairing the locks on the Skyline Woodshed, repairing the woodstove (new bricks), cleaning the Skyline Shelter, clearing fallen trees from Skyline Sno-park and getting the trail signs ready to put up.

Our annual OSSA convention is at Diamond Lake January 16-18. This is a smaller venue than other conventions, so if you are thinking about going be sure to sign up right away. We've been told that all the rooms at Diamond Lake have been sold out, so you will need to commute from a nearby town.

Todd Call has stepped down as the director of grooming and Tony Kenzi has stepped up into his position

New gate has been installed on 42 and trying to put one up at Ripplebrook. OSSA is BIGGER than WA, ID UT & CA snowmobile clubs! It's good to be in Oregon!

TJ gave three safety classes in November. Trained 30 kids!

We have laminated sno-park permits for sale. \$30  
If you would like one you can click on the link below and we can mail it to you.

[Mt Hood Snowmobile Club – Mt Hood Oregon Snowmobile Club](#)

Renewing your membership is a great way to say "Thank you" to all our hardworking volunteers.

Here's the link to renew your membership: Individual or Family [Oregon State Snowmobile Association](#)



[www.MtHoodSnowmobileClub.org](http://www.MtHoodSnowmobileClub.org)  
Thank you for your support!  
TJ Reilly, President  
[TReilly@OregonSnow.org](mailto:TReilly@OregonSnow.org) 503-804-2075



Wallowa Avalanche Center has opened up an AIARE 1 class Jan 11-12 out of Catherine Creek.

AIARE is the abbreviation for AMERICAN INSTITUTE FOR AVALANCHE RESEARCH AND EDUCATION

**La Grande Sno Drifters has a \$500 scholarship for current paid La Grande Sno Drifters club members to go towards attending an Avalanche training. If you are interested, apply ASAP.**

Visit Wallowa Avalanche Center web page for more information on this and other training they offer. OR you can email WAC (Wallowa Avalanche Center) at [info@wallowaavalanchecenter.org](mailto:info@wallowaavalanchecenter.org)

***Don't wait too long to apply for a scholarship or to register for an AIARE training.***

- Lonni  
La Grande Sno Drifters  
PO Box 1271  
La Grande OR 97850  
[lgsnodrifters@gmail.com](mailto:lgsnodrifters@gmail.com)





# Wallowa Avalanche Center

PO Box 324  
Joseph, Oregon 97846

(503) 329-6603

Info@wallowaavalanchecenter.org

<https://wallowaavalanchecenter.org/classes-events/>

[www.wallowaavalanchecenter.org](http://www.wallowaavalanchecenter.org)

## About Us

The Mission of the Wallowa Avalanche Center is to keep winter backcountry travelers safe in the mountains of Northeast Oregon through education, avalanche advisories, mountain weather information and observations.

We begin bi-weekly avalanche forecasts in the fall after enough snow accumulates in the mountains for on-snow travel in the backcountry and continue them until early April. We also offer a variety of classroom and field based educational programs including instruction specifically aimed towards youth, backcountry skiers, snowmobilers, and professionals.



### Victor McNeil, Director

[victor@wallowaavalanchecenter.org](mailto:victor@wallowaavalanchecenter.org)

Victor began spending winters in the Wallowas in 2009, and has worked as a professional ski and mountain guide for the past 12 years. As a native of Oregon, Victor graduated from Southern Oregon University, with a degree in Small Business Management. During the spring and summer, Victor guides in Alaska, Washington and Peru on high altitude peaks and technical summits. As an American Mountain Guide, Victor has achieved the highest level of certification in Mountain Guiding, through the American Mountain Guides Association. Victor has achieved a Level 3 Avalanche Certification through the American Avalanche Institute. La Grande, OR is home for Victor with his wife and 2 Golden Retrievers. When not out backcountry skiing, Victor is working on his snowmobile skills and how to develop better avalanche education for motorized backcountry users.



### Rex Stanley, Development Director

Rex hails from the small town of Baggs, WY, where he grew up snowmobiling with his family and learning to snowboard on the slopes of Steamboat Springs, CO. He attended Boise State University where he graduated with a degree in Business Management. Currently living in La Grande, OR, he's learning to explore the backcountry of the Wallowas and Elkhorns via his split-board and snowmobile. He hopes to increase the reach that the WAC has for all backcountry users, and build upon the growing backcountry culture here in Northeast Oregon. When the snow melts, he can be found hiking and riding his bike with his pup and wife. He also serves as board member of the local mountain biking chapter, Blue Mountain Singletrack Trails Club.



### Michael Hatch, Avalanche Specialist

[hatch@wallowaavalanchecenter.org](mailto:hatch@wallowaavalanchecenter.org)

Michael Hatch grew up in Boise, ID and earned a B.S. in Resource Conservation/Wilderness Studies from the University of Montana, and an M.S. in Education from Eastern Oregon University. Currently Hatch is the director of the Outdoor Adventure Program and instructor of Health and Human Performance for EOU. Hatch worked for over a decade as a backcountry ski guide in the Sawtooths and Wallowas. One of Hatch's biggest passions is teaching avalanche courses, as an AIARE Course Leader for Level 1 and 2 classes. Hatch is a professional member of the American Avalanche Association and is also a board member for the WAC.



### Nick Burks, Avalanche Specialist

Nick began skiing before he can remember. He started working on the Mt. Hood Meadows Pro Patrol in 2005 and became the Snow Safety Supervisor there in 2014. Nick spent the summers of 2016 and 2017 working as a ski area avalanche forecaster in the Cragleburn mountains of New Zealand. He has traveled to ski in Chile, Argentina and Japan.



### Caleb Merrill, Avalanche Specialist

Caleb Merrill grew up on the coast of Maine, eventually venturing west in search of more snowfall and vertical relief. He began his career in the snow and avalanche arena in 2006 as a ski patroller at Solitude in the Wasatch mountains of Utah. Early morning avalanche mitigation routes with explosives along exposed ridgelines are amongst the favored memories of this job. Caleb became a guide with Ruby Mountain Helicopter Skiing in 2014, and has enjoyed exploring the nooks and crannies of this hidden gem of a range while learning amongst some of the best guides in the industry. He is the creator, host, and producer of *The Avalanche Hour* Podcast- a side project aimed at creating more dialogue amongst the snow and avalanche community. Caleb is actively progressing through the AMGA ski guide program in hopes of certification. He completed an AIARE level 3 course in 2014, and is currently an AIARE course instructor. He looks forward to a winter in the Wallowas- getting to know the terrain, snowpack, and people.



### Kelly McNeil, Avalanche Specialist

Kelly grew up in Eastern Wyoming where she started exploring the Big Horn mountains on snowmobiles and dirt bikes at an early age. During that time, she also learned to ski in the South Dakota Black Hills. Kelly moved to Montana for her undergrad and was introduced to backcountry skiing. After many years of school and earning her Ph.D. from Oregon State University in 2009, she began a career as a professor at Eastern Oregon University, where much of her work focuses on public health and research in outdoor physical activity including the study of behavior in outdoor environments. Recently Kelly has started to assess how public health theories and practices can be utilized for avalanche education and forecasting. Since 2017, Kelly has helped organize and run operations at the Wallowa Avalanche Center, including teaching avalanche courses for both motorized and non-motorized users. In 2019 Kelly took her Professional Level 1 Avalanche Course and will be taking her Professional Level 2 Course this February. Last winter Kelly completed her AIARE Instructor Training Course at Togwotee, WY on a snowmobile. Kelly is a Professional Member of the American Avalanche Association, a guest host on the *Avalanche Hour* Podcast, and has also completed her AMGA Alpine Skills Course.



Visit our website @ <https://wallowaavalanchecenter.org/>



## **2025 WAC Motorized Course Schedule**

- **Rescue Course - La Grande (Catherine Creek Sno-park) Jan 11th**
- **Rescue Course - Joseph (Salt Creek summit Sno-park) Jan 12th**
- **AIARE 2 Course - Halfway (Clear Creek Sno-park) Jan 18th-19th**
- **AIARE 1 Course - Halfway (Clear Creek Sno-park) Jan 25th-26th**
- **Snowmobile Riding Clinic - Halfway Jan 23rd**
- **Snowmobile Riding Clinic - Halfway Jan 24th**



Scan to Sign Up

Visit our website @ <https://wallowaavalanchecenter.org/>





# Wallowa Avalanche Center

PO Box 324  
Joseph, Oregon 97846

(503) 329-6603

Info@wallowaavalanchecenter.org

https://wallowaavalanchecenter.org/  
classes-events/

www.wallowaavalanchecenter.org

January 2025

THU 3  
**AIARE Level 1 Avalanche Course Jan 3-5, 2025 Hut Based La Grande**

What: New for this winter the WAC is teaming up with local outfitter Eagle Cap Mountain Guides to offer a hut-based AIARE Level 1 Course. Participants will meet Friday at 8 am, and head into the Buck Creek Yurt after a quick breakfast and intro in town. This course is a hybrid design with pre-course online learning that [...]

\$275

THU 4  
**AIARE Companion Rescue Jan 4, 2025 Anthony Lakes**

Student Learning Outcomes At the end of the Avalanche Rescue course, the student should be able to: Describe what to do if they or a member of their party is caught in an avalanche. Identify and be able to use gear necessary for avalanche rescue. Set up a realistic scenario in order to practice an [...]

\$160

THU 4  
**AIARE Level 1 Jan 4-5, 2025 Anthony Lakes**

What: This course is a hybrid design with pre-course online learning that should take on average 8 hours to complete. Students will also be required to participate in a 2-hour Zoom session approximately 1 week before the start of the two field sessions. Pre-course online learning materials will be sent out a month before the course [...]

\$200

THU 10  
**AIARE Level 2+Companion Rescue Jan 10-12, 2025 Hut Based La Grande**

New for 2025 we are offering a 3-day hut-based AIARE Level 2 Course combined with a Companion Rescue Course at the Buck Creek Hut operated by Eagle Cap Mountain Guides. Course Description The AIARE 2 is a three-day/24-hour course that allows backcountry travelers to advance their decision-making skills in more complicated situations such as being a leader when [...]

\$225

THU 11  
**AIARE Motorized Rescue Course January 11, 2025 La Grande**

Who Should Take This Course The Avalanche Rescue Course is a one-day course aimed both at new and experienced recreational backcountry travelers and aspiring avalanche professionals. Student Learning Outcomes At the end of the Avalanche Rescue course the student should be able to: Describe what to do if they or a member of their party [...]

\$160

THU 11  
**AIARE Level 1 Jan 11-12, 2025 Anthony Lakes**

What: This course is a hybrid design with pre-course online learning that should take on average 8 hours to complete. Students will also be required to participate in a 2-hour Zoom session approximately 1 week before the start of the two field sessions. Pre-course online learning materials will be sent out a month before the course [...]

\$200

THU 12  
**AIARE Motorized Rescue Course January 12, 2025 Joseph**

Course Description AIARE Avalanche Rescue is a one-day stand alone course that is intended to be taken on a regular basis in order to keep oneself up to date on rescue techniques and gear. New participants will learn the basics of companion rescue, while returning participants will expand their skill set with advanced topics and [...]

\$180

THU 17  
**AIARE Level 1 Avalanche Course Jan 17-19, 2025 Hut Based La Grande**

What: New for this winter the WAC is teaming up with local outfitter Eagle Cap Mountain Guides to offer a hut-based AIARE Level 1 Course. Participants will meet Friday at 8 am, and head into the Buck Creek Yurt after a quick breakfast and intro in town. This course is a hybrid design with pre-course online learning that [...]

\$275

THU 18  
**Motorized AIARE 2 January 18-19, 2025 Halfway**

This course will utilize a hybrid model, in which all participants will receive online pre-course learning materials that should take around 8-hours to complete. A Zoom session will be held before the two field sessions to answer questions about the pre-course material, cover the AIARE Framework and mapping tools. It is imperative that participants [...]

\$200

THU 23  
**Snowmobile Riding Skills Clinic Jan 23, 2025 Halfway**

The WAC is hosting a snowmobile riding clinic in Halfway, OR January 23. Ride with Backdoctors Legends DJ Osborne, Aaron Case, and Ryan Sears. Regardless of your skill level, these amazing instructors will elevate your riding game. We will break riders into groups with a maximum ratio of 6:1. Cost is \$250 per day. You [...]

\$250

FRI 24  
**Snowmobile Riding Skills Clinic Jan 24, 2025 Halfway**

The WAC is hosting a snowmobile riding clinic in Halfway, OR January 24. Ride with Backdoctors Legends DJ Osborne, Aaron Case, and Ryan Sears. Regardless of your skill level, these amazing instructors will elevate your riding game. We will break riders into groups with a maximum ratio of 6:1. Cost is \$250 per day. You [...]

\$250

FRI 25  
**Motorized AIARE 1 Jan 25-26, 2025 Halfway**

Details: Jan 25-26 in Halfway, OR. Field sessions will take place over 2 days from the Clear Creek Creek area park. 6:1 student-to-instructor ratio. Participants must have: snowmobile or snow bike (reliable and appropriate for mountain riding) - avalanche rescue gear (digital avalanche transceiver, shovel, probe) - backpack (sling pack optional) - DOT-approved helmet - the ability to ride off trail in [...]

\$200

February 2025

SAT 8  
**AIARE Level 1 Feb 8-9, 2025 Joseph**

What: This course is a hybrid design with pre-course online learning that should take on average 8 hours to complete. Students will also be required to participate in a 2-hour Zoom session approximately 1-week before the start of the two field sessions. Pre-course online learning materials will be sent out a month before [...]

\$200

SAT 15  
**AIARE Level 1 Feb 15-16, 2025 Joseph**

AIARE Level 1 Feb 15-16, 2025 Joseph \$200.00 What: This course is a hybrid design with pre-course online learning that should take on average 8 hours to complete. Students will also be required to participate in a 2-hour Zoom session approximately 1-week before the start of the two field sessions. Pre-course online learning materials will be [...]

\$200



# Motorized Avalanche Rescue Class

Friday, January 31, 2025

8:30 am - 5:00 pm

## Description



### **Certified class** by American Avalanche Association

Prerequisite for level II, but can be taken anytime. Fast paced eight hour class with minimum of six hours in field. This is a motorized specific class and you will be traveling to areas with your snowmobile or snow bike. Classroom portion will be online at your own pace on your time. No scheduled video conferances.

**Who?** For recreational riders, pros, guides, and search and rescue teams.

**Class content:** Escape and survival techniques, rescue safety/response, scene safety, communication, transceiver, shoveling and probing techniques, victim basic care, deep burials, close proximity rescues, using advanced features on your transceiver, three ways to utilize snowmobiles in rescue, leading a rescue, rescue scenarios, timed transceiver searches and much more.

These are the advanced skills that were previously taught in level II classes, it is now a separate course and a prerequisite for level II.

**Location:** 10 Mile Snow Park. LaPine, OR 97739

**Cost:** \$300

**Refund policy:** No refunds will be given within 30 days of class start date.

**Date:** Friday January 31, 2025

**Time:** 8:30 am -5:00 pm

**Class starts:** Friday 8:30 am at the 10 Mile Snow Park and then we travel by snowmobile or snow bike into the backcountry. Be ready with gear and all gassed up. Tight schedule, please don't delay the group.

Register >>

📍 **10 Mile Sno-Park**  
21498 Paulina-  
East Lake Rd  
La Pine, OR  
97739 United  
States

<https://oregonsnowmobileassociation.growthzoneapp.com/ap/Events/Register/AnFBjgliVCdCN>

Event Contact: Lisa Mahoney  
(541) 797-8880  
[info@oregonsnow.org](mailto:info@oregonsnow.org)

**What to do for preparation:** Read your transceiver manual and know the features of your transceiver. Practice single and double burial transceiver drills before class. Make sure all your gear is ready. Make notes on questions you have for class.

**The riding in class.** We are using Jeep roads and single track to access terrain in class. Have your machines in excellent working order.

**What to bring: Snowmobile or Snowbike.** Transceiver (3 antenna), shovel, probe, tunnel bag, backpack or airbag pack, sunglasses, **multiple pairs of gloves**, sunscreen, face protection, survival and first aid gear, hat, food (**lunch**) and water for in the field, extra layers, head lamp, camera. If you don't have gear, please let me know and I can supply it.

**Dress warmer than expected.** We are out in the elements for long periods of time at high elevation. Bring a thermos with hot liquids if it is going to be cold. We do not cancel for cold weather.

**What we supply:** I can supply digital 3 antenna transceiver if you do not have one. Let me know.

**Instructor:** Mike Duffy. Professional member and Certified instructor American Avalanche Association. Teaching at American Avalanche Institute, Alaska Avalanche School, Colorado Mountain College and Silverton Avalanche School. Rescue/avalanche team leader/ Vail Mountain Rescue Group. Graduate of National Avalanche School, National Academy of Winter Guiding, AVPRO & Professional Avalanche Search & Rescue. Mountain Snowmobiler for 25 years. Provided training for Arctic Cat, Polaris, Ski-Doo, FBI and Navy Seals. Backcountry Guide/riding instructor. 24 years' experience in proven, effective avalanche education.

Looking forward to this! Any questions or running late, please contact Mike Duffy at 970-390-9433 or [duffyavalanche1@gmail.com](mailto:duffyavalanche1@gmail.com).



AMERICAN  
AVALANCHE  
ASSOCIATION

Learn the skills to  
save a life! **Avalanche1.com**

Professional avalanche education for mountain riders.



# Motorized Level 1 Avalanche Class

Saturday, Feb 1, 2025 8:30am to Sunday, Feb 2, 5:00pm

Register >>

<https://oregonsnowmobileassociation.growthzoneapp.com/ap/Events/Register/VeF4J20HNCeC9>

📍 **10 Mile Sno-Park**  
21498 Paulina-  
East Lake Rd  
La Pine, OR  
97739 United  
States

Event Contact: Lisa Mahoney  
(541) 797-8880  
[info@oregonsnow.org](mailto:info@oregonsnow.org)

**Class content:** Class follows American Avalanche Association guidelines. Taught by AAA pro member and certified instructor, Mike Duffy. Covers: equipment, rescue, nine different types of avalanche problems, forecasts, stability tests, transceiver, shoveling and probing skills, terrain recognition, terrain traps, route finding, islands of safety, backcountry guidelines, group dynamics, communication, deep burials, multiple burials, observations, contributing factors, using snowmobiles in rescue and much more.

**Format for winter 24-25.** Classroom session will be online using a special level 1 version of Backcountry Ascender. Online is self-paced on your time using the fun and engaging Backcountry Ascender platform. No scheduled video meetings and more time on the snow. This is a snowmobile/snow bike specific class and we will be travelling to areas by snowmobile or snow bike. Certified American Avalanche Association instructor and course provider.

**Who?** For recreational riders, pros, guides, and search and rescue teams.



**Location:** 10 Mile Snow Park, La Pine, OR

**Class start:** Saturday 8:30am in 10 Mile Snow Park LaPine, OR

Be dressed to ride and spend the day outside.

**Dates:** February 1-2, 2025. Saturday 8:30am – 5pm. Sunday 9:00am -5:00pm.

**Cost:** \$650

**Refund policy:** No refunds will be given within 30 days of class start date.

## Schedule:

### Saturday 8:30 am-5:00pm

Group meeting/discussion outside: 8:30am-9:30am.  
Daily preparation-4 steps. Waivers.

Bring a lunch. Dress warm.

### 9:30-5:00 Travel into Backcountry.



### Sunday 9:00am -5:00pm

#### 9:00-9:45 Daily plan in Snow Park.

9:45-4:00. In the backcountry. Bring lunch.

4:00-5:00 Course wrap up. Course evaluations, certifications, coupons.

**What to do for preparation:** Read your transceiver manual. Practice single transceiver burial. Make sure all your gear is ready. Bring notebook and pen to class. Read the avalanche forecast. Make notes on questions you have for class.

#### Apps that you will need for class:

Inclinometer or inclinometer app: Suggest BCA-free. Avalanche Inclinometer-Iterum, LLC,

Google Earth:

Slope shading for steepness: Gaia, Caltopo or a topo map.

Avalanche Forecast: Avalanche Forecast.

Weather: My Radar

**The riding in class.** We are using Jeep roads and single track to access terrain in class. Have your machines in excellent working order, fueled and ready.

**What to bring: Snowmobile or Snow Bike.** Transceiver (3 antenna), shovel, probe, tunnel bag, backpack or airbag pack, sunglasses, **multiple pairs of gloves**, sunscreen, face protection, survival and first aid gear, hat, food (lunch) and water for in the field, extra layers, head lamp, notebook, pens, pencil, camera. **If you don't have avalanche gear, please let me know and I can supply it.**

**Dress warmer than expected.** We are out in the elements for long periods of time at or above timberline. Bring a thermos with hot liquids if it is going to be cold. We do not cancel for cold weather.

**What we supply:** I can supply digital 3 antenna transceiver if you do not have one. Let me know.

**Instructor:** Mike Duffy. Professional member and Certified instructor/school American Avalanche Association. Teaching at American Avalanche Institute, Colorado Mountain College and Silverton Avalanche School, Rescue/avalanche team leader/ Vail Mountain Rescue Group. Graduate of National Avalanche School, National Academy of Winter Guiding, AVPRO & Professional Avalanche Search & Rescue. Mountain Snowmobiler for 25 years. Provided training for Arctic Cat, Polaris, Ski-Doo, Mountain Rescue Teams, FBI and Navy Seals. Backcountry Guide/riding instructor, 26 years' experience in proven, effective avalanche education.

Looking forward to this! Any questions or running late, please contact Mike Duffy at 970-390-9433 [duffyavalanche1@gmail.com](mailto:duffyavalanche1@gmail.com).



## Trail Conditions/Grooming Reports

<https://members.oregonsnow.org/grooming>



Be sure to always check avalanche conditions before you ride!

The Oregon State Snowmobile Association provides snowmobile trail grooming in the state of Oregon with a 100% volunteer effort. Our volunteers are out on the snow almost every day grooming the trails to provide a safe and enjoyable experience for snowmobilers, snow shoeing, cross country skiing and other recreationalists.

A typical volunteer grooming day begins with arriving at the grooming shelter before sunrise to get the equipment ready for the day. Not only do our volunteers groom the trails but we also remove fallen trees and obstacles from trails. In addition we provide search and rescue assistance in emergencies. It's not uncommon for our volunteers to put in a 10 or 12 hour day grooming. It takes many many hours of training to become a primary groomer. Our groomers are trained in first aid, CPR, and equipment safety and maintenance.

Be sure to show your appreciation by joining OSSA and your local snowmobile club today!



BURNT RIVER SNOWMOBILE CLUB  
Unity, Oregon



## POKER RUN



**Saturday, February 1, 2025**

\$1000 Total Pot! Guaranteed Payout!

**\$500-1<sup>st</sup> place, \$200-2<sup>nd</sup> Place, \$100-3<sup>rd</sup> place, 2X\$50-4<sup>th</sup> place  
Plus Five \$20 Cash Prizes for a Loser's Draw!**

**Plus  
GREAT RAFFLE PRIZES!**

**Buy your Cards & Tickets**  
Burnt River Market and Community Hall in Unity,  
or Austin House

Buy in \$5 per Hand-Best of 7 Wins  
Raffle tickets \$1 per ticket or 6 for \$5

8:00AM - 4:00PM! **Return cards by 4:00PM**

Parking at Blue Mt Snopark (Snow Park Permit Req.)  
or Phipps (west of Unity)  
Ride where you want, Trails are groomed

**Payout & Drawings will be held at 4:30PM at Community Hall, Unity, OR**  
Unity Volunteer Fire Dept will be selling hamburgers and hot dogs.  
The Comity will be serving Beer and Wine

**PLAN TO BE THERE!! YOU MAY BE A WINNER!!**

Need not be present to win

For information or to get raffle tickets, contact: Rick 541-881-6069,  
Casey 541-473-2073, or Dan 541-823-3069.  
**(Proceeds will help support Emergency Services in Baker and Malheur Counties.)**

# THIS IS THE BIG ONE!™

**Central Oregon Sportsman's Show**  
**March 6 – 9, 2025**  
**Deschutes Fair & Expo Center**  
**Redmond, OR.**

**Show hours;**

Wednesday – Friday 11am – 8pm

Saturday 10am – 8pm

Sunday 10am – 6pm

**Move-in hours**

Tuesday March 4<sup>th</sup> 12pm – 8pm

Wednesday March 5<sup>th</sup> 8am – 8pm

**Booth Info;**

\$900.00

10 x 10 booth

8' draped back wall and 3' draped side walls

One electrical outlet up to 600-watt capacity

Exhibitor sign

24-hour security staff

Master passes and discount coupons



Presented by  **LEUPOLD®**

If all 6 clubs in central Oregon plus OSSA join in the booth. The cost to each club would be \$128.50, 5 clubs \$150.00, 4 clubs \$180.00, 3 clubs \$225.00, 2 clubs \$300.00 and 1 club \$450.00 We would need volunteers from each club to help run the booth. Clubs involved would be;

Ochoco Snow Sports -

La Pine Lodgepole Dodgers -

Walker Rim Riders - No

Sister's Sno-Go-Fers - Yes

Moon Country - Yes

Two Rivers Activity Club (TRAC) - *Yes*

Oregon State Snowmobile Association (OSSA) - Yes

If you have any questions, please feel free to contact me.

Thank you,

Roger Ellis

OSSA Membership Director

District 4

[Rellis@oregonsnow.org](mailto:Rellis@oregonsnow.org)

(503) 475-8095

# NOTICE

## FROM BEND-FORT ROCK RANGER DISTRICT

Pursuant to 16 U.S.C. 551, 36 C.F.R. § 261.50(a) and (b), the following acts are prohibited on National Forest System lands, roads and trails within the following described area on the Deschutes National Forest, Bend-Fort Rock Ranger District, as described below and in the attached Exhibit A. This Order supersedes Order #06-01-01-24-19 (October 10, 2024) with an effective date of November 15, 2024, and will remain in effect through May 1, 2025, unless rescinded sooner.

### **PROHIBITIONS:**

1. Going onto or being within an area closed for public health and safety. **36 CFR § 261.53(e).**
2. Being on the road within the Closure Area, with the exception of NFSR 45. **36 CFR 261.54(e).**
3. Being on a trail within the Closure Area. **36 CFR 261.55(a).**

The area described below will be closed to public access/entry due to hazards and hazardous conditions created because of the Lucky Fire and Little Lava Fire burning west of Bend, Oregon.

### **AFFECTED AREA/CLOSURE AREA:**

All lands managed by the US Forest Service within the perimeter of the Lucky Fire, in the Three Sisters Wilderness. This includes T19S, R7E, S21, 22, 23, 26, and 28.

All lands managed by the US Forest Service east of NFSR 4529 beginning at the junction with Edison-Lava Trail (#31). Continue northeast along Edison-Lava Trail (#31) to the junction with Trail #4. Then continue northeast along Trail #4 to the junction with Trail #34. Continue southeast along Trail #3 to the junction with Edison Sno Park. From Edison Sno Park continue north along NFSR 45 to the junction with Dynah Moe Humm Trail. Continue northeast along Dynah Moe Humm Trail to the junction with Kapka Butte Road. Then continue south along Kapka Butte Road to the junction with NFSR 4140. Continue southwest on NFSR 4140 to the junction with NFSR 45. Continue southeast to the junction with NFSR 40. Then continue west along NFSR 40 to the junction with NFSR 4270. Continue northwest along NFSR 4270 to the junction with NFSR 4525. Continue northeast along NFSR 4525 to the junction with NFSR 4529. Then continue north on NFSR 4529 to the junction with Edison-Lava Trail (#31).

### **Closed Developed and Dispersed Recreation Sites Included:**

- Edison Shelter
- Edison SnoPark
- Sheridan Shelter

# NOTICE

## FROM BEND-FORT ROCK RANGER DISTRICT

ORDER NO 06-01-01-25-01

### Roads:

All National Forest System Roads found within the area closure are closed. NFSR 45 will remain open for public use.

### Trails:

- All National Forest System Trails found within the closure area are closed
- Snowmobile Trail #2 is closed between Junction #158 to junction #126.
- Snowmobile Trail #3 is closed between Edison Sno Park and Junction #133
- Snowmobile Trail #4 is closed between Junction #146 and Junction # 129
- Snowmobile Trail #34 is closed between Edison Sno Park and Junction #143
- Snowmobile Trail #43 is closed
- Snowmobile Trail #5300 is closed between Junction #146 and Junction #137
- OHV Trail #31 is closed from Edison Sno Park west to the junction with Trail #7
- OHV Trail #7 is closed south of the junction with trail #31
- OHV Trail #7.3 is closed
- OHV Trail #7.43 is closed
- Dynah Moe Humm Trail closed for winter use but open for summer use

### EXEMPTIONS:

Pursuant to 36 CFR § 261.50(e), the following are exempt from this Order:

- (1) Persons with Forest Service Permit No. FS-7700-48 (Permit for Use of Roads, Trails, or Areas Restricted by Regulation or Order) specifically authorizing the otherwise prohibited act or omission.
- (2) Any Federal, State, or Local Officer, or member of an organized rescue or fire fighting force in the performance of an official duty.
- (3) Owners or lessees of land in the affected area.

This prohibition is in addition to the general prohibitions in 36 CFR Part 261, Subpart A.

Violations of this prohibition are punishable by a fine of not more than \$5,000 for an individual or \$10,000 for an organization, or imprisonment for not more than 6 months, or both (16 USC § 551; 18 USC§ 3551, 3559, 3571, and 3581).

Completed in Bend, Oregon on November 15, 2024.

HOLLY  
JEWKES

Digitally signed by  
HOLLY JEWKES  
Date: 2024.11.15  
15:06:09 -08'00'







## 2025 KEN HAEVERNICK OSSA SCHOLARSHIP



OSSA scholarship is available to either graduating high school seniors or a person currently enrolled in a college or trade school full time (12 semester credits), either physically or online. Scholarships will be given to the winners regardless of other grants or scholarships that the students may receive.

2025 OSSA Scholarship Application [Link](#)

<https://www.oregonsnow.org/assets/pdf/2025+Ken+Haevernick+OSSA+Scholarship+Application/>

### Requirements are as follows:

1. The applicant or immediate family must be a paid member of Oregon State Snowmobile Association.
2. The applicant must submit the completed application form.
3. The applicant must submit a cover letter. This letter must include the student ID number and college/trade school name and the address to which a scholarship check would be sent.
4. The applicant must submit a resume detailing his/her involvement in snowmobiling as well as extra-curricular/volunteer activities.
5. The applicant must include an essay (essay subject on the application form). The essay **MUST** follow the format below to be accepted and should be sent in Word or Google Docs:
  1. Minimum of 2 pages – typed.
  2. Double-spaced.
  3. Font – Times New Roman.
  4. Font size – 12 point.
  5. Margins – set to 1 inch for all margins (top, bottom, left side, right side).
  6. Page numbers (if included) should be .5 inch from the top of the page (not within the 1" margin).
  7. A header (for example, the essay question) can be added 1 inch from the top of the first page, and then enter a double space to begin your essay.
  8. Do **NOT** use bold-faced type or other special settings.
  9. If work is cited, add an additional "work-cited" page at the end of the essay. This information will **NOT** be counted as part of the 2-page minimum.

The applicable documents must be received via email at the OSSA Office by April 1, 2025. Please email to [Lmahoney@oregonsnow.org](mailto:Lmahoney@oregonsnow.org) using a subject line of OSSA Scholarship Application. All applicants will be notified of the final scholarship selection by April 15, 2025. The scholarship winner will be announced at the OSSA Board Meeting in May 2025.

**6. Any entry that does not meet ALL of these requirements will be disqualified. NO EXCEPTIONS.**

### Additional rules:

1. Students must use the scholarship within one year of receiving it.
2. All scholarship checks will be written directly to the college and not to the student. **NO EXCEPTIONS.**

**KEN HAEVERNICK OREGON STATE SNOWMOBILE ASSOCIATION  
2025 SCHOLARSHIP APPLICATION**

OSSA scholarship is available to either graduating high school seniors or a person currently enrolled in a college or trade school full time (12 semester credits), either physically or online. Scholarships will be given to the winners regardless of other grants or scholarships that the students may receive.

**Requirements are as follows:**

1. The applicant or immediate family must be a paid member of Oregon State Snowmobile Association.
2. The applicant must submit the completed application form.
3. The applicant must submit a cover letter. This letter must include the student ID number and college/trade school name and the address to which a scholarship check would be sent.
4. The applicant must submit a resume detailing his/her involvement in snowmobiling as well as extra-curricular/volunteer activities.
5. The applicant must include an essay (essay subject on the application form). The essay **MUST** follow the format below to be accepted and should be sent in Word or Google Docs:
  - a. Minimum of 2 pages – typed.
  - b. Double-spaced.
  - c. Font – Times New Roman.
  - d. Font size – 12 point.
  - e. Margins – set to 1 inch for all margins (top, bottom, left side, right side).
  - f. Page numbers (if included) should be .5 inch from the top of the page (not within the 1" margin).
  - g. A header (for example, the essay question) can be added 1 inch from the top of the first page, and then enter a double space to begin your essay.
  - h. Do **NOT** use bold-faced type or other special settings.
  - i. If work is cited, add an additional “work-cited” page at the end of the essay. This information will **NOT** be counted as part of the 2-page minimum.

The applicable documents must be received via email at the OSSA Office by April 1, 2025. Please email to [Lmahoney@oregonsnow.org](mailto:Lmahoney@oregonsnow.org) using a subject line of OSSA Scholarship Application. All

applicants will be notified of the final scholarship selection by April 15, 2025. The scholarship winner will be announced at the OSSA Board Meeting in May 2025.

6. **Any entry that does not meet ALL of these requirements will be disqualified. NO EXCEPTIONS.**

**Additional rules:**

1. Students must use the scholarship within one year of receiving it.
2. All scholarship checks will be written directly to the college and not to the student. **NO EXCEPTIONS.**



OREGON STATE SNOWMOBILE SCHOLARSHIP  
2025 APPLICATION FORM

Applicant Name: \_\_\_\_\_

Email: \_\_\_\_\_ Phone: (\_\_\_\_) \_\_\_\_\_

Mailing Address: \_\_\_\_\_

City: \_\_\_\_\_ State: \_\_\_\_\_

Postal Code: \_\_\_\_\_

State Association: \_\_\_\_\_

Member of which local Club(s)? \_\_\_\_\_

\_\_\_\_\_

Graduated from what high school or GED equivalent? \_\_\_\_\_

Attending which college, technical or vocational institute? \_\_\_\_\_

\_\_\_\_\_

If already enrolled in a program, what year are you in? \_\_\_\_\_

High School or Equivalent GPA: \_\_\_\_\_

If applicable, college, technical or vocational GPA: \_\_\_\_\_

- Have you attached a cover letter introducing yourself and provided your student ID number and your college/trade school name and address to which a scholarship check would be sent?
- Have you attached a resume detailing your involvement in snowmobiling as well as extra-curricular school activities?
- Have you attached an essay on the following subject (must be at least 2 pages, double-spaced and typed)?



OREGON STATE SNOWMOBILE SCHOLARSHIP  
2025 APPLICATION FORM

**Essay Topic:**

A week after President Biden took office, he signed an executive order that announced his commitment to protecting 30% of U.S. land and water by 2030.

**Essay Challenge:**

- How does this executive order impact snowmobiling?
- What action should snowmobilers take on the order?

Note:

Essays will be judged on depth of content, clarity, organization, and persuasiveness.





## ACSA SCHOLARSHIP APPLICATION 2025

The American Council of Snowmobile Associations (ACSA) scholarship is available to either graduating high school seniors or persons currently enrolled in college or trade school full time (*12 semester credits*), either physically or online. Scholarships will be given to the winners regardless of other grants or scholarships that the students may also receive.

### Requirements are as follows:

1. The applicant or immediate family must be a paid member of a state snowmobile association, and the state association must be a member of ACSA.
2. The applicant must submit the completed application form.
3. The applicant must submit a cover letter. This letter must include the student ID number and college/trade school name and the address to which a scholarship check would be sent to.
4. The applicant must submit a resume detailing his/her involvement in snowmobiling as well as extra-curricular activities.
5. The applicant must submit an essay (*essay subject located on the Application Form*). The essay **MUST** follow the format below to be accepted and should be sent in **Word or Google Docs**:
  - a. Minimum of 2 pages - typed.
  - b. Double-spaced.
  - c. Font - Times New Roman.
  - d. Font size - 12 point.
  - e. Margins - set to 1 inch for all margins (top, bottom, left side, right side).
  - f. Page numbers (if included) should be .5 inch from the top of the page (not within the 1" margin).
  - g. A header (*for example, the essay question*) can be added 1 inch from the top of the first page, and then enter a double space and begin your essay.
  - h. Do NOT use bold-faced type or other special settings.
  - i. If work is cited, please add an additional 'work-cited' page at the end of the essay. This information will NOT be counted as part of the 2-page minimum.
  - j. The essay must follow the essay topic or be disqualified.
6. The applicable documents must be received via email at the ACSA Office by February 1, 2025. Please email to [info@snowmobilers.org](mailto:info@snowmobilers.org) using a subject line of ACSA Scholarship Application.
7. **Any entry that does not meet ALL of these requirements will be disqualified.**  
**NO EXCEPTIONS.**

### Additional rules:

1. Students must use the scholarship within one year of receiving it.
2. All scholarship checks will be written directly to the college and not to the student.

No Exceptions.

All applicants will be notified of the final scholarship selection by April 15, 2025. The scholarship winner will be publicly announced at the International Snowmobile Congress (ISC) in June. While ACSA understands it may be difficult for the winner to attend the ISC, at the very least, ACSA may attempt to make an electronic presentation to the winner and record it for playback at the ISC.

The American Council of Snowmobile Associations (ACSA) scholarship is available to either graduating high school seniors or persons currently enrolled in college or tradeschool full time (12 semester credits), either physically or online. Scholarships will be given to the winners regardless of other grants or scholarships that the students may also receive.



**ACSA SCHOLARSHIP APPLICATION FORM**  
2025

Applicant Name: \_\_\_\_\_

Email: \_\_\_\_\_ Phone: \_\_\_\_\_

Mailing Address: \_\_\_\_\_

City: \_\_\_\_\_ State: \_\_\_\_\_

Postal Code: \_\_\_\_\_

State Association: \_\_\_\_\_

Member of which local Club(s)? \_\_\_\_\_

Graduated from what high school or GED equivalent? \_\_\_\_\_

Attending which college, technical or vocational institute? \_\_\_\_\_

If already enrolled in a program, what year are you in? \_\_\_\_\_

High School or Equivalent GPA: \_\_\_\_\_

If applicable, College, Technical or Vocational GPA: \_\_\_\_\_

“ Have you attached a cover letter introducing yourself and provided your student ID number and your college/trade school name and address to which a scholarship check would be sent to?

“ Have you attached a resume detailing your involvement in snowmobiling as well as extra-curricular school activities?

“ Have you attached an essay on the following subject (must be at least 2 pages, double-spaced and typed)?

(continued)





## ACSA SCHOLARSHIP APPLICATION FORM 2025

### **Essay Topic:**

How do you, as a young snowmobiler, perceive how to get the business of the organization (your local club) done on a monthly/timely basis and not make the meeting boring, as is often a sentiment expressed.

### **Essay Challenge:**

1. The business aspect of an organization includes finances, records/minutes, projects your club is doing for your local trail, fundraising and other club activities and decisions.
2. The social aspect of an organization includes enticing meeting attendance, an enjoyable setting, membership growth and representation of your club at a higher level, such as at State Association, American Council of Snowmobile Associations (ACSA) or International Snowmobile Congress (ISC) meetings/events.
3. How would you propose to transition an existing club into what you would like your club or club meetings to be like.

Note:

Essays will be judged on depth of content, clarity, organization, and persuasiveness.



<https://www.facebook.com/AmericanCouncilofSnowmobileAssociations>

International Snowmobile Safety Week January 11-19, 2025

Take a Friend Snowmobiling Campaign February 8-17, 2025







Well we have been busy this fall getting cabins cleaned out, fixed up and ready for winter. Wood has been cut, split and stacked, roof fixed, stove fixed, emergency supplies replenished, garbage removed...

**PLEASE REMEMBER YOU PACKED IT IN - PLEASE, PACK IT OUT!!!** Hill climbs cleared, trail clearing is on going till road closes. Signage and Cat maintenance is next with the snow falling here in Wallowa County things are moving forward very quickly.





**Thank you to the volunteers that have helped, it is greatly appreciated.** We had a successful trip to Clear Creek Cabin to take care of much-needed maintenance. A huge shout out to the handful of volunteers who made it possible in the very short window of time we had. Now it's ready for snow!

To members who haven't volunteered lately, please get involved it takes so much to keep this club going... **GET INVOLVED TODAY!!!** Don't know how?? Then call the secretary or president of your club today.

### *Upcoming events for the Gamblers...*

Poker Run January 19th

Kids Ride January 26th

**BRING ON THE SNOW !!!!!!!**

**ECX dog sled race**- still looking for volunteers, snowmobilers to lead and sweep, other positions available as well just check out their website [www.eaglecapextreme.com](http://www.eaglecapextreme.com) to sign up

**Did you know ...**

**Your privilege to snowmobile is being threatened?**

**Do you know who's representing your snowmobile interests in Washington DC?**

**It's the American Council of Snowmobile Associations (ACSA).**

**Are you a member? Do you care about snowmobiling?**

**Make sure YOUR voice is heard.**



**Join your local snowmobile club,  
your state snowmobile association and  
become a member of ACSA TODAY  
for only \$15.00!**

**Now's the time to get involved!**

**[www.snowmobilers.org](http://www.snowmobilers.org)**

**ACSA**  
equals  
**ACCESS**



<https://www.facebook.com/AmericanCouncilofSnowmobileAssociations>

## No Trespassing Contest

ACSA is holding a No Trespassing Snowmobile Awareness Contest. This Contest will include snowmobilers of all ages, from the little ones through the experienced riders and will generate the conversation and awareness of snowmobilers across the U.S. on an issue that impacts snowmobile access. Too often volunteers are left scrambling trying to re-route snowmobilers because of trespass incursions by snowmobilers that do not understand the consequences of riding on trails/areas that are off limits to snowmobilers.

The Contest includes the following categories to promote rider responsibility, including the need to respect Land Owners and Land Managers that allow us the privilege of riding by Not Trespassing.

- Snowmobilers up to the age of 6: **Coloring Contest**
- Snowmobilers between the ages of 7 -12: **Word Search**
- Snowmobilers between 13 – 17: **Create a Meme**
- Snowmobilers +18: **Create a Video 30 second or less**

**Entries for the Contest can be made by emailing submissions to [snowygirl1974@gmail.com](mailto:snowygirl1974@gmail.com) until January 15, 2025. For more information on contest details, visit [www.snowmobilers.org](http://www.snowmobilers.org)**

## Did You Know?

### Montana:

Forest Service protects Montana avalanche center staff amid budget delay. Gallatin National Forest Avalanche Center employees will not be affected by a Forest Service hiring freeze of seasonal workers, implemented this year by the agency's chief due to concerns about congressional appropriations. In Forest Service lingo, temporary seasonal workers are referred to as 1039s. This is because they work less than 1,040 hours a year, or less than six months.

### North Dakota:

The recent wildfires are cutting into North Dakota oil production. The director of North Dakota's pipeline authority says North Dakota is down about 500,000 barrels so far from the wildfires. The massive wildfire near Ray had shut down the Tioga gas plant temporarily, as well as several nearby wells as a precaution. So far, a few well sites lost some buildings in the wildfire, but fortunately there were no oil tank fires.



<https://www.facebook.com/AmericanCouncilofSnowmobileAssociations>

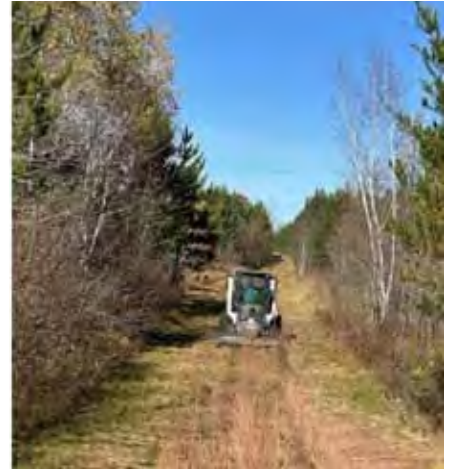
### Washington:

Wild fires continue to burn the Washington landscape, but well-positioned aircraft and a streamlined communication process helped limit burned land to just more than 300,000 acres this year, according to Washington Public Lands Commissioner Hilary Franz. “It has been a very difficult (wildfire season), like many of the ones before,” Franz told reporters Friday at an end-of-wildfire-season news conference at Deer Park Airport.

The 308,000 acres burned were more than the 151,000 in 2023 and 174,000 in 2022, but less than the 674,000 in 2021 and 842,000 in 2020, according to data provided by the Washington State Department of Natural Resources.

**This is what the non-club members don't understand...  
all the prep work for our trails.**

**Trails don't just “appear” every winter!  
Thanks to all of the volunteers for this labor of love!!**



## Forest Service Budget

It sounds like the Forest Service has drastically closed the reported \$750 Million gap through tough decisions and creative money management.

Reducing a budget gap of this size by \$700M is certainly not an easy task, and the Forest Service did it relatively quickly. However, this did not come without tough decisions.

The Forest Service has made tremendous progress regarding the budget for FY25 and has reduced the \$750M salary budget gap down to \$50M. It appears this was accomplished through personnel actions and permanent employee actions and was also assisted with trust funds and contract adjustments.

The decision was made weeks ago that no non-Fire seasonal hires will happen in fiscal year 2025, which should free up a tremendous amount of money. There have also been discussions about providing buy-out opportunities for “close to retirement” employees.

This does not mean everything is back to normal. Difficult decisions will still need to be made. The coming year will be difficult with the absence of seasonal workers. The current budget, which expired in September was continued until late December, when additional action will be required from Congress.



## Chiloquin Ridge Riders

12080 Homedale Road  
Klamath Falls, OR 97603

This year, OSSA is having the 2025 Convention at Diamond Lake Resort. The rides will be no-host, but they are asking to please RSVP to the dinners so that they can get an accurate headcount. Below is the link to register for dinners.

<https://www.oregonsnow.org/2025-ossa-convention-diamond-lake-resort/>

1100 miles will be allowed for our club this year for grooming.

There will be a Zoleo put into the cat for drivers to communicate.

Rouge club is doing a District 5 playday on 3/22, inviting all District 5 clubs if we are interested. It will be at 1,000 springs.

If you have not yet signed up for the club, it is quite easy! Please go to OSSA's website and register there. If you would like to pay with a check, just let me know. Below is the link to sign up!

<https://www.oregonsnow.org/become-a-member/>

If you have any questions, let us know!

Thank you,  
Josie McCarty  
Treasurer/Secretary  
chiloquinrr@gmail.com



Well, the snow is falling and it looks like there will be plenty of the fluffy stuff to ride on for the convention.

CC Riders will be hosting jointly with the Rogue Snowmobilers, and it looks good for the rides that will soon be announced.

Gary Olsen and Mike Wampler removed the tiller from our groomer and loaded it up on a trailer to take down to the shop for some maintenance in September. It is back on, and ready to go.

Let's keep dancing to keep the snow coming and we'll see you at the convention.

Shirley Wampler  
CC Riders





- Representation
- Education
- Grooming
- Community Service
- Information
- Socializing

**The Rogue Snowmobilers**, located in the Rogue Valley, are the largest snowmobile club in the state of Oregon.

We are a non-profit snowmobile club responsible for grooming in the area just west of Crater Lake National Park in an area known as Thousand Springs Snow Park.

Our club **maintains over 150 miles of trails**, most of which are groomed weekly.

We want to ensure not only do snowmobilers have access to these parts of the woods, but anyone.

Merry Christmas and Happy New Year Everyone.

There is snow in the parking lot at Thousand Springs, Jim Gulrich has been out grooming and club members have been out riding as well.

Our next general meeting is at 6 pm on January 7, 2025 at the 100F Odd Fellows & Rebekah's Hall, 1130 Hazel St. in Central Point.

The Mt. Bailey 3000 poker run is scheduled for February 15 through 16, 2025 at Diamond Lake. Our club is looking for sponsors of the event. Interested people or businesses need to contact John Martinez (541-951-7044) or Ted Boster (541-292-6758) prior to January 15, 2025 for details on how a sponsorship works.

If you have not renewed your club membership you can do so by going to the club website and completing the form.  
<https://roguesnowmobilers.com/membership>

Well, the snow is falling and it looks like there will be plenty of the fluffy stuff to ride on for the convention. CC Riders will be hosting jointly with the Rogue Snowmobilers, and it looks good for the rides that will soon be announced.

Gary Olsen and Mike Wampler removed the tiller from our groomer and loaded it up on a trailer to take down to the shop for some maintenance in September. It is back on, and ready to go.

Let's keep dancing to keep the snow coming and we'll see you at the convention.

### ROUGE SNOWMOBILERS SCHEDULE OF EVENTS 2025

January	2025	
1	New Years Day	HAPPY NEW YEAR
7	General Club Meeting, 6:00 pm	IOOF Central Point
14	Board Meeting 6:00 pm	Teams
15-18	OSSA Convention	Diamond Lake Resort
20	MLK Day	
TBA	Snow Bike Races	Diamond Lake Resort
25-26	Taco Feed	1000 Springs
February	2025	
1 or 8th	No Host Ride	Deer Park, CA
4	General Club Meeting	IOOF Central Point
11	Board Meeting 6:00 pm	Teams
14	Valentines Day	
15-16	Mt. Bailey \$3000 Poker Run	Diamond Lake Resort
17	Presidents Day	
March	2025	
1-2	No Host Ride	10-Mile Snow Park
4	General Club Meeting, & Pie Auction, 6:00pm	IOOF Central Point
TBA	Cascade Ladies Ride	TBA
15-16	Snow Drifters & Rogue Play Day	Annie Creek Sno-park
TBA	District 5 Playday	TBA
11	Board Meeting 6:00 pm	Teams
29	Last Hurrah/ Winter Banquet	Claude Lewis Sno-park
April	2025	
1	General Club Meeting 6:00 pm	IOOF Central Point
5	No Host	3-Lakes Sno-Park
8	Board Meeting 6:00 pm	Teams
TBD	Candlelighters Ride	1000 Springs Sno-park



Howdy all,

Greg here from the Rogue Snowmobilers. I hope you are all as excited to get on the snow as much as I. We've got serious weather coming and I've got that itch to get out there and ride.

Happy to announce our club will be standing up an online store soon to sell swag items to our members. We want to continue to set an example of what other clubs in the state can do with technology, and providing an easy, convenient way to buy club merchandise is an easy way to do that. Stay tuned for when it's online!

Thanks to everyone that came up to our annual work party in October. It was a great turnout and we got a chance to break in our newly expanded parking lot. Our club cooks knocked it out of the park as always.

Thanks all, and I'll see you on the snow soon!

I'll be guiding somerides at the OSSA state convention. I look forward to meeting many of you from across the state.

Greg Gulrich  
President - Rogue Snowmobilers  
madness-iz-back@live.com

Thank You to all who got your Mercy Flights forms to me. I truly appreciate it.

However, if you missed the first deadline to turn in your forms have no fear I can still turn in your completed Mercy Flights forms. Please get your completed forms to me as soon as possible so as not to miss any coverage.

Make your checks out to Mercy Flights or credit cards can be used as well. Then mail both to me at PO Box 1423, Medford, Oregon 97501.

The Mercy Flights forms can be found at this web site:  
<https://roguesnowmobilers.com/>

If you have any questions please do not hesitate to call me at 541-779-9098 or email me: [csdaj@q.com](mailto:csdaj@q.com)

Sherry Allen, Your Secretary



Dennis Jordan and Brian White's kiddo getting ready to go for a ride.

Photo credit - Christine Alwardt



Absolute studs!

Photo credits: Christine Alwardt



The magical fries Travis cooks up.  
Photo credit - Christine Alwardt





## Learn about the importance of trails for Oregon residents, the state's economy, and public health by reading the latest - "Oregon Trails: 2025-29 SCORP Summary Report"

<https://tinyurl.com/ORTrails>

Join us for a workshop to discuss our survey results and shape next steps for the Oregon Trails Plan:

January 8, 2025, 10:00 a.m. - noon

Metro Quarterly Trails Forum

[Online or in-person in Portland, OR](#)



For questions about this survey and/or the Trails Plan update,

***please contact:***

Jessica Horning,

OPRD Statewide Trails Planner at:

[Jessica.r.horning@opr.oregon.gov](mailto:Jessica.r.horning@opr.oregon.gov)

Thank you for your important work supporting Oregon's trail network.

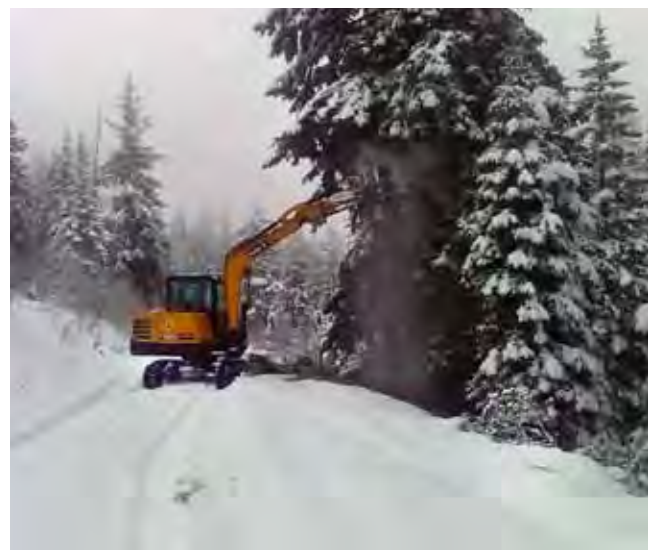
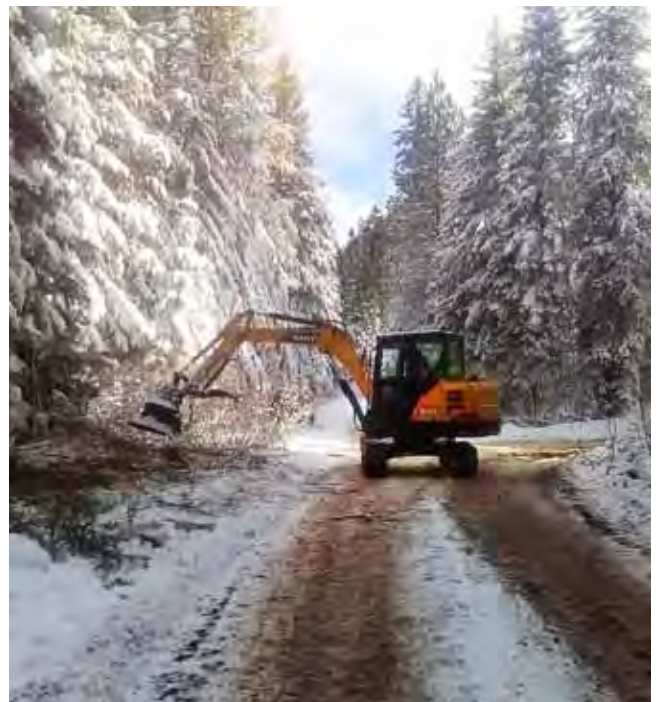
## Welcome to winter

Many hours of hard work have been put in to getting the trails in the Tollgate area ready for winter. A big thank you goes out to the group that headed up submitting a grant to replace and update directional signage on the trails. Many posts and signs have been replaced. Also, a big thank you goes out to Grooming Chairman Jess Thompson and the crew from Blue Mountain Excavation, for putting in a long cold week brushing on 6403 and 6411. This work finished up Nov 16. The Tollgate area was fortunate that there was not very much fire damage in the riding area. Our sympathy goes out to the clubs that were heavily effected by the fires. Lets all hope for a heavy snow year to help lower the risk of fires next year.

All This work, along with this summer's wood cutting and restocking, have the mountain ready to ride, please take a moment to re-new your membership if you haven't yet and encourage others to do so also. Oregon State Snowmobile Association has had a dramatic cut in dedicated funding since last year and your membership is more vital than ever before. Membership funds help bring you the web cam and weather station, a club house and two warming shelters, two snow cats for grooming trails and keeping access open to snow parks and trail highway crossings. Did you know that all trail grooming in Oregon is done by volunteer snow cat operators?

If you benefit from many hours of hard work donated by others, [please say thank you by joining the Tollgate Trailfinders. Club membership is open to everyone including cabin owners, Nordic skiers, snow shoers, snow campers, sledders, snowbikers, and snowmobilers.](#)

Become a Member - membership numbers are more important now than ever with every OSSA snowmobile club in the State dealing with a 30% cut in funding. Please encourage everyone that rides, to join a club. Membership helps fund brushing, warming-shelters and firewood, grooming, weather station and camera, and kids safety classes. We are getting a few more membership renewals coming in, but we are still down 40% from the end of the season last year.





# 2025 Public Meeting Schedule

## Blue Mountains Forest Plan Revision Malheur, Umatilla, and Wallowa-Whitman National Forests

These meetings offer an opportunity for the public to learn about the upcoming NEPA process and to hear plan development updates. For questions and more information, please reach out to [sm.fs.bluesforests@usda.gov](mailto:sm.fs.bluesforests@usda.gov) or (541) 278 - 3716.

The public meetings will be in person and virtual. Meetings will be held from 5 - 8 p.m., with doors opening at 4:30 p.m. More information and meetings links will be available at <https://tinyurl.com/ythmbdnt>.

### Please note: New dates for the next step in the Blue Mountain Forest Plan Revision

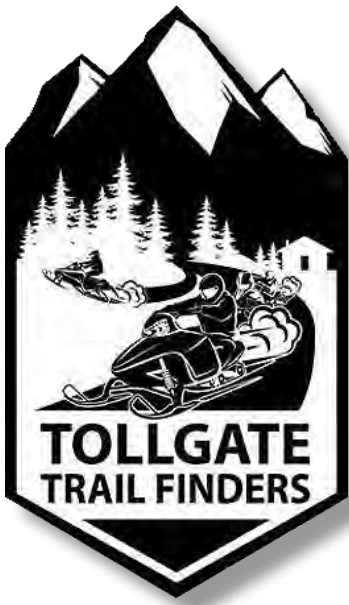
Blue Mountains Forest Plan  
Revision Winter 2025 Public  
Meeting Schedule

All public meetings will be  
held from 5 – 8 p.m.  
Doors open at 4:30 p.m.

Virtual links and informa-  
tion will be available at:  
[https://www.fs.usda-  
gov/detail/umatilla/  
home/?cid=fseprd1200075](https://www.fs.usda.gov/detail/umatilla/home/?cid=fseprd1200075)

Forest Service Link  
[https://www.fs.usda.gov/  
detail/umatilla/home/?cid=  
fseprd1188541](https://www.fs.usda.gov/detail/umatilla/home/?cid=fseprd1188541)

Date	Host Forest	Location
February 24, 2025	Umatilla National Forest	Gilliam & Bisbee Event Center 105 E May St Heppner, OR 97036
February 25, 2025	Umatilla National Forest	Pendleton Convention Center, West Conference Rooms 1601 Westgate Pendleton, OR 97601
February 26, 2025	Umatilla National Forest	Columbia County Fairgrounds, Pavilion 5 N Pine St. Dayton, WA 99328
March 3, 2025	Malheur National Forest	Grant County Fairgrounds, Trowbridge Pavilion 411 NW Bridge St John Day, OR 97845
March 4, 2025	Malheur National Forest	Harney County Fairgrounds, Memorial Building 8560 S Egan Ave Burns, OR 97720
March 5, 2025	Wallowa-Whitman National Forest	Cloverleaf Hall 800 NW 1st St. Enterprise, OR 97828
March 6, 2025	Wallowa-Whitman National Forest	Baker County Fairgrounds 2600 East St. Baker City, OR 97814
March 7, 2025	Wallowa-Whitman National Forest	Eastern Oregon University, Gilbert Event Center EQU – 1 University Blvd La Grande, OR 97850



# Getting Grant Money and Designing Sign Changes

**June 2023** - Tollgate Trailfinders club cares about our riders so much so we have taken on the huge task of replacing and upgrading signage on a 200-mile snowmobile trail. Thanks to Amazon Grant money we were able to start getting our arms around this project which was more work than you would think. Our progress needed to be documented on the Amazon website ChangeX.

<https://www.changex.org/project/trail-signs-replacement>

**Sept. 2023** - Some signs have been shot at and destroyed - really people?! Please! Other signs need changes in lettering, for example the Forest Service stopped using the ranger station and it is no longer of any use to us, even though in the past we had put it on half of our junction signs. And we need to create new signage where there always should have been information posted. The first step was to get photos of all existing signs. We felt like explorers doing that since we usually only ride these trails in the winter.



**Nov. 2023** - "I'm still working on the best verbiage and checking mileage for each Junction sign. Most of Chappy's mileage is spot on. We perhaps should first focus on Private Property and Stay on Trail etc."

**Jan. 2024** - We have also had additional signs printed to show where we are on private property and to show Wilderness Boundaries. We are using local sign printing business "Signs by Sue" in Pasco WA - who have helped us in the past.



## Documenting the New Sign information and Checking Proofs from the Printer

**8-30-2024** – Twenty-six (26) Junction Signs Sent To the Printer TODAY! The first batch is a major accomplishment. We have paid the junction sign deposit as well as the past bill for Stay On Trail standard signs.

And we have purchased special poles and a ladder. We have many poles in good condition and others totally broken, fallen, or missing. Our goal is to make as much of the trail signage brand new at the same time.

We have purchased the posts, PVC pipe, etc for the install. Signs are being made

**9-15-24** – All told Bob, Shane, and I have spent about 80 hours collecting info on the 200+ miles of signs, designing missing or new junction signs, checking mileage and location names, and proofing what the printers are to order. I have one more proof round and then they will all go to the press.

**10-26-2024** 11 snowmobile club members met last Saturday at Tollgate to work on areas in our trail system where the sign poles needed replacement or repair. We broke into two teams and one set of pick-up trucks went north and the other group went south heavily burdened with our new poles.



Bob Carrell, Steve Harvill, Evan Harville Replacing a Stop sign at the highway crossing at Andies Prairie



Replacing a short pole on 31 Road - *we get more snow than that!*



To enjoy this...



Volunteers are needed for this!



**WE ARE SO THANKFUL FOR OUR VOLUNTEERS!**

Klamath Basin Snowdrifters



Always wear protective gear to stay safe





# DON'T MISS A SINGLE EVENT, RENEW YOUR MEMBERSHIP TODAY!

REPRESENTATION • EDUCATION • COMMUNITY SERVICE • GROOMING • SOCIALIZING



## OSSA Membership

Become a general member online today at <http://oregonsnow.org/about/> Please also consider joining your local club to further help support our sport. (This is only for OSSA membership. Most club memberships automatically include a membership in OSSA. Be sure to check with your local club. Many of our members have memberships in several clubs. If you are a member of multiple clubs you would only pay OSSA dues one time.)

Use the online form at <http://oregonsnow.org/about/> to join OSSA only.

**If you wish to join a local club, please contact your local club directly. Local club membership automatically includes a membership in OSSA.** Thank you for your support!

Note: Many powersports dealers give discounts to OSSA Club members.

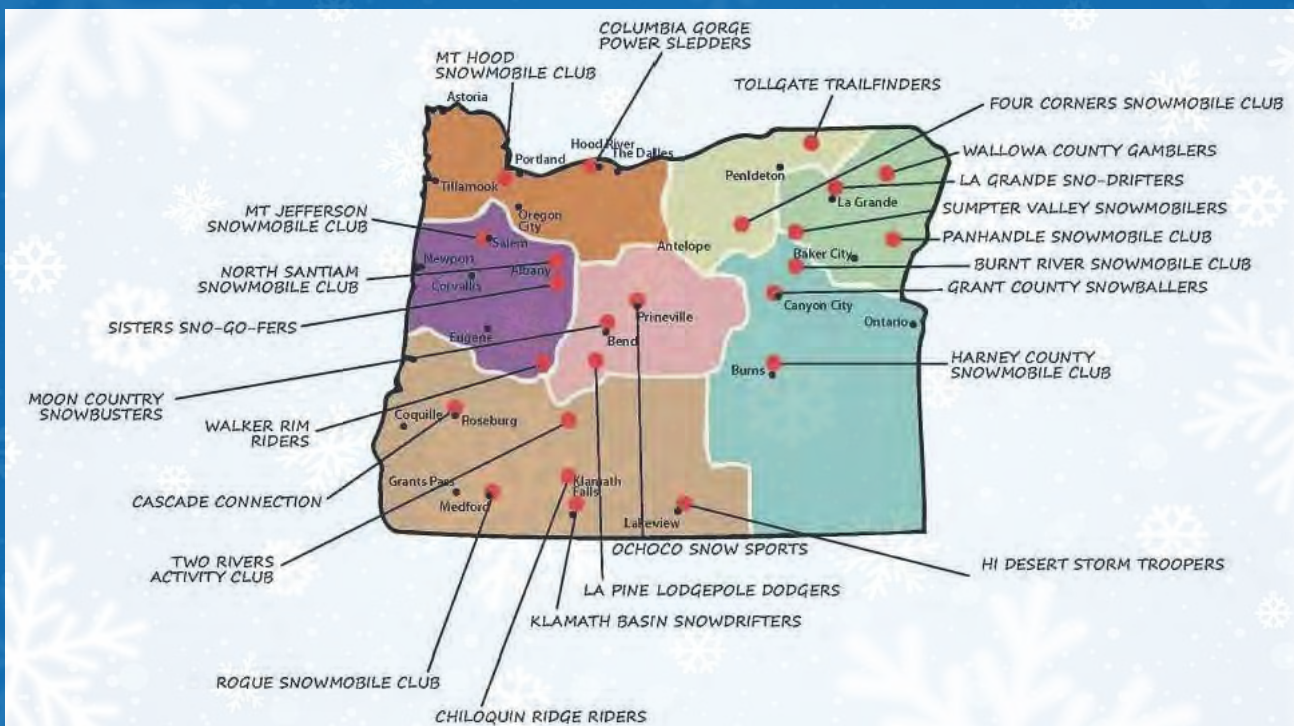
### Some attributes of club membership include :

- \* Cooperative enjoyment in club activities, rides and play days.
- \* Assistance through club membership in formalizing legislation for snowmobiles.
- \* Learning new areas to ride and familiarity with areas through joint rides.
- \* Strength in state organization through local club organization and input.

- \* Opportunity to gain knowledge of snowmobiling through club meeting speakers.
- \* Obtaining a feeling of "Belonging" a common bond experience.
- \* Meet new people and make new friends.
- \* Promote and understand safe snowmobiling.
- \* To protect and preserve the rights and freedoms to enjoy the sport of snowmobiling.
- \* To help preserve and promote our natural resources.
- \* Assist in search and rescue missions.
- \* The ability to enjoy snowmobiling activities as a family and at a price reasonable for doing so.
- \* Helping provide a trail groomer.
- \* Helping to discourage bad snowmobiling practices.
- \* Assistance in formulating and conducting youth driver education clinics.
- \* Promote sanitation and non-littering in all areas used for snowmobiling.
- \* Serve as a catalyst in service to state and federal agencies in providing new snowmobiling trails and parking facilities.
- \* Club membership brings recognition to the member from both state and federal agencies and prestige in that recognition.

**Our Volunteers spend hundreds of hours taking care of and grooming snowmobile trails.**

A ski lift ticket for one person for one day is \$100 or more.  
Say "Thank you" to our volunteers by joining your local club today.  
It's only \$60 per year or less for your entire family. <https://oregonsnow.org/clubs/>





# OSSA Officers & Directors

## President

Dennis Jordan  
(541) 821-6570  
Email

## Vice President

T.J. Reilly  
(503) 804-2075  
Email

## Past President

Email

## Executive Director

Lisa Mahoney  
PO Box 6255  
Bend, OR 97708  
(541) 767-6880  
Email

## Assistant Executive Director / Membership

Lisa Burt  
(541) 480-0479  
Email

## Membership Director

### District 1

- Mt Hood Snowmobile Club
- Columbia Gorge Power Slidders

Dan Gill  
(503) 880-0812  
Email

## Membership Director

### District 2

- Mt Jefferson Snowmobile Club
- North Santiam Snowmobile Club

Anthony Kuenzi  
(503) 991-0351  
Email

## Grooming Director

### Districts 1 & 2

- Mt Hood Snowmobile Club
- Columbia Gorge Power Slidders
- Mt Jefferson Snowmobile Club
- North Santiam Snowmobile Club

## Membership Director

### District 4

- Ochoco Snow Sports
- La Pine Lodgepole Dodgers
- Walker Rim Riders
- Sisters Sno-Go-Fers
- Moen Country Snowbusters
- Two Rivers Activity Club

Roger Ellis  
(503) 475-8995  
Email

## Grooming Director

### District 4

- Ochoco Snow Sports
- La Pine Lodgepole Dodgers
- Walker Rim Riders
- Sisters Sno-Go-Fers
- Moen Country Snowbusters
- Two Rivers Activity Club

Richard Colman  
(541) 480-1908  
Email

## Membership Director

### District 5

- Klamath Basin Snowdrifters
- Rogue Snowmobilers
- Chiloquin Ridge Riders
- Cascade Connection
- Hi Desert Storm Troopers

Dan Riblett  
(541) 882-0162  
Email

## Grooming Director

### District 5

- Klamath Basin Snowdrifters
- Rogue Snowmobilers
- Chiloquin Ridge Riders
- Cascade Connection
- Hi Desert Storm Troopers

Dabe Griffin  
Home (541) 770-1592  
Cell (541) 941-4484  
Email

## Membership Director

### District 6

- Harney County Snowmobile Club
- Grant County Snowmobilers
- Burnt River Snowmobile Club
- Sumpter Valley Snowmobilers

Tim Healy  
(541) 820-0408  
Email

## Grooming Director

### District 6

- Harney County Snowmobile Club
- Grant County Snowmobilers
- Burnt River Snowmobile Club
- Sumpter Valley Snowmobilers

Dave Hannibal  
Cell (541) 620-0626  
Email

## Membership Director

### District 7

- La Grande Sno-Drifters
- Panhandle Snowmobile Club
- Wallowa County Gamblers

Duane Miles  
(541) 540-5151  
Email

## Grooming Director

### District 7 & 8

- La Grande Sno-Drifters
- Panhandle Snowmobile Club
- Wallowa County Gamblers
- Four Corners Snowmobile Club
- Tolgate Trailfinders

Denny Farrell  
(541) 540-4560  
Email

## Membership Director

### District 8

- Four Corners Snowmobile Club
- Tolgate Trailfinders

Jeff Wagner  
(509) 386-2425  
Email

## Avalanche Safety Coordinator

## Safety

Kelly Fough  
Cell (503) 910-5898  
Email

## Public Lands

John Vogel  
Cell (541) 490-6114  
Email

## Oregon Snowmobile News

Gordon Scott  
PO Box 16964  
Portland, OR 97292  
(503) 936-9592  
Email

## Webmaster

Kirk Snyder  
818 SW 3<sup>rd</sup> Ave #144  
Portland, OR 97204  
(503) 702-2149  
Email



<https://www.oregonsnow.org/become-a-member/>

Become a Member - Oregon State Snowmobile Association ([oregonsnow.org](https://www.oregonsnow.org))

Visit

[WWW.OREGONSNOW.ORG](http://WWW.OREGONSNOW.ORG)

[OregonSnow.org](http://OregonSnow.org)

is Oregon State Snowmobile Association's Official Website.







# OSSA CLUB WEB SITES

[www.BurntRiverSnowmobileClub.com](http://www.BurntRiverSnowmobileClub.com)

[www.CascadeConnection.org](http://www.CascadeConnection.org)

[www.ChiloquinRidgeRiders.com](http://www.ChiloquinRidgeRiders.com)

[www.columbiagorgepowersledders.com](http://www.columbiagorgepowersledders.com)

[www.FourCornersSnowmobileClub.com](http://www.FourCornersSnowmobileClub.com)

[www.GrantCountySnowballers.org](http://www.GrantCountySnowballers.org)

[www.HarneyCountySnowmobileClub.com](http://www.HarneyCountySnowmobileClub.com)

[www.HiDesertStormTroopers.com](http://www.HiDesertStormTroopers.com)

[www.kbsnowdrifters.org](http://www.kbsnowdrifters.org)

[www.lapinedodgerssnow.org](http://www.lapinedodgerssnow.org)

[www.snodrifters.com](http://www.snodrifters.com)

[www.mcsnowbusters.wixsite.com/website](http://www.mcsnowbusters.wixsite.com/website)

[www.MtHoodSnowmobileClub.org](http://www.MtHoodSnowmobileClub.org)

[www.mtjefferson.org](http://www.mtjefferson.org)

[www.NorthSantiamSnowmobileClub.com](http://www.NorthSantiamSnowmobileClub.com)

[www.OchocoSnowSports.com](http://www.OchocoSnowSports.com)

[www.PanhandleSnowmobileClub.com](http://www.PanhandleSnowmobileClub.com)

[www.roguesnowmobilers.com](http://www.roguesnowmobilers.com)

[www.sistersnogofers.org](http://www.sistersnogofers.org)

[www.SumpterValleySnowmobileClub.com](http://www.SumpterValleySnowmobileClub.com)

[www.tollgatetrailfinders.org](http://www.tollgatetrailfinders.org)

[www.walkerrimriders.com](http://www.walkerrimriders.com)

[www.TwoRiversActivityClub.com](http://www.TwoRiversActivityClub.com)

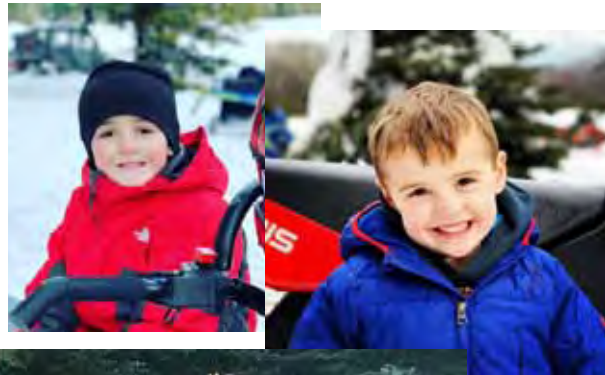
[www.WallowaCountyGamblers.com](http://www.WallowaCountyGamblers.com)

## SNOWMOBILERS CARE ABOUT THE ENVIRONMENT





# Four Corners Club



Klamath Basin  
**SNOWDRIFTERS**



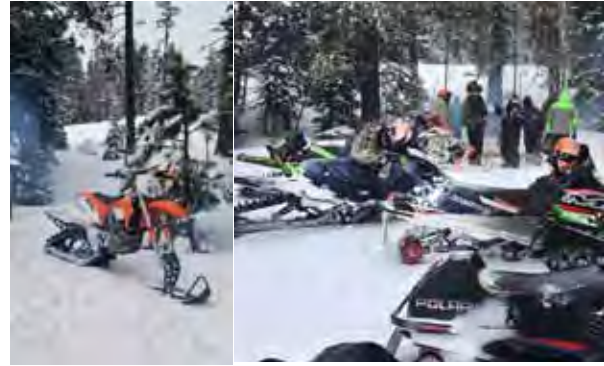


Chiloquin Ridge Riders

12080 Homedale Road  
Klamath Falls, OR 97603



# Burnt River Club



Sumpter Valley Blue Mountain Snowmobile Club



CC Riders Cascade Connection Snowmobile Club Roseburg, OR Douglas County

Harney County Snowmobile Club







OSSA News Is Needing  
 YOUR Club group, event and  
 member ACTION photos  
 for publication!  
 Please email them to:  
[gscott@oregonsnow.org](mailto:gscott@oregonsnow.org)



**Make New Friends, Join a Snowmobile Club**

**You'll Never Ride Alone**

International Snowmobile Manufacturers Assn.  
 1640 Haslett Road • Suite 170 • Haslett MI 48840  
 (517) 339-7788 • [www.snowmobile.org](http://www.snowmobile.org)







## Two Rivers Activity Club



Connect with snowmobiling



# BE INFORMED!



# BE A WINNER!

Visit [snowmobileinfo.org](http://snowmobileinfo.org) for everything snowmobile.



# Oregon State Snowmobile Association

The Oregon State Snowmobile Association is a non-profit organization formed in 1972 by a small group of snowmobilers working to find a way to provide a groomed statewide trail system and to assure continued access to our public lands. We are currently an organization with twenty-five member clubs and a trail system of 6,410 miles of multi-use snowmobile trails. We promote safe and responsible snowmobiling, represent snowmobilers as an organized group and promote proper recreational use of our land by working together with the Forest Service, BLM and other land managers to develop and maintain a quality trail system and winter recreation opportunities. Our mission, briefly stated, is to protect, promote and enhance the family sport of snowmobiling.

## Our Mission

Our mission is to protect and enhance the sport of snowmobiling. We work closely with the Forest Service and BLM to keep areas open, resolve conflicts, and to provide the quality snowmobiling the Oregon is famous for. We work with local, state, and federal legislators to protect the rights of all snowmobilers. We fight any damaging legislation, and we support legislation that helps our sport. We coordinate with industry, national and international snowmobile groups to share knowledge, provide mutual support, and protect the sport we all love so dearly.

**\*\*\*\*\* Snowmobilers Leave No Trace \*\*\*\*\***

