



OFFICIAL PUBLICATION OF THE OREGON STATE SNOWMOBILE ASSOCIATION

Hello Fellow Snowmobilers!

Welcome

to the 2022-2023 Riding Season



September President's Letter

By Dennis Jordan

As I sit here writing this letter it is 106° outside in Eagle Point. But there are only 12 Fridays until we will be riding.

As we have many large fires burning out of control across Oregon, please keep our Firefighters and First Responders in your thoughts and prayers.

Some of you may already know, HUGE CONGRATULATIONS go out to Bob Keller of The LaPine Lodgepole Dodgers for being awarded the International Groomer of the Year by the International Snowmobile Hall of Fame. Bob was honored with this award after many years of dedicated service to his local club, OSSA and all the snowmobilers visiting the Newberry Crater Monument (Paulina Lake area) and some of the best snowmobiling in the state of Oregon. Great Big Thank You Bob and again, Congratulations.

As we finish our 50th year of OSSA, I just want to remind you of where we started and where we are today. We started with 5 people getting together to protect snowmobiling in Oregon in 1972. And here we are 50 years later with 25 clubs and over 1,200 members. We have 25 clubs with an all-volunteer grooming program, grooming 6,410 miles of trails each year. All these hard-working, dedicated people in our clubs and grooming program also maintain our trails, fill our woodsheds, clean up roadsides, help with search and rescue, give to charities, and just enjoy the sport of snowmobiling together.

We have purchased three new groomers across the state for the upcoming season. The Walker Rim Riders (Crescent Lake area) will get one of the cats. Moon Country Snowbusters (Bend area) is also getting a new cat. And the third new cat will be going up to The Tollgate Trail Finders. (Pendleton area) This cat was made possible by a grant from RTP (Recreation Trails Program). We have been performing maintenance and upgrades to our existing fleet of groomers, so we can continue serving our Oregon snowmobile communities and clubs with equipment. We have two grooming sheds completed and ready for the snow. The two sheds are located at Blue Mountain and the other grooming shed is up at Parrish Cabin. (Seneca area)

Chuck Ehlert, our OSSA Avalanche Safety Coordinator is putting together a class that outlines training materials to start our local club avalanche awareness training. We will also be offering two different three-day classes in the state. One will be offered in the Central Oregon area. The other will be in the Northeast Corner of the state.

CONTINUE TO PAGE 3

FREE!  **OSSA "Members Only"**

SNOWMOBILE GIVE-A-WAY

 plus many more prizes!

RULES: No tickets will be sold.
You must be a Member to win.

JOIN YOUR LOCAL OSSA SNOWMOBILE CLUB FOR A CHANCE TO WIN A NEW SNOWMOBILE

WWW.OREGONSNOW.ORG



Prizes:

Snowmobile and other prizes will be given out Saturday evening at the OSSA Convention in La Grande Oregon February 11th. Winner need not be present to win.

Contest Rules:

Go to:

<https://www.OregonSnow.org/snowmobile-give-a-way/>

For more information contact:

TJ Reilly

OSSA Vice President
503-804-2075

TReilly@OregonSnow.org

Snowmobile model and other prizes will be announced very soon ...stay tuned!

POLARIS

WINTER STARTS NOW

LIMITED SLEDS
AVAILABLE.
GET YOURS TODAY!

[SHOP OFFERS](#)

Terms and conditions may apply. See dealer for details.



POLARIS®

SNOWMOBILES

MT HOOD POLARIS, INC

27850 SE HWY 212

BORING, OR 97009

503-663-3544

www.mthoodpolaris.com

38 years in business. Thanks for all your support, You have made us what we are today !



September President's Letter

By Dennis Jordan

(CONTINUED FROM PAGE 1)

Chuck Ehlert, our OSSA Avalanche Safety Coordinator is putting together a class that outlines training materials to start our local club avalanche awareness training. We will also be offering two different three-day classes in the state. One will be offered in the Central Oregon area. The other will be in the Northeast Corner of the state.

Please check our website for more information on these classes and much more avalanche information. We have 24 Avalanche Beacon Checker Signs at specific clubs across the state. These signs will be installed at avalanche prone locations throughout Oregon. These clubs will be in charge of installing and maintaining each sign during the season.

We are having a membership contest/drive this year and the grand prize will be a **Brand New 2022 Ski Doo 850**. To win and or get a chance to win is as simple as signing up for your local club, sign up with another club, sign up a new member, take a friend snowmobiling, or just sign up for our annual convention early. Check our website or Oregon Snowmobile News for all the rules and how to give yourself more chances to win.

Our annual Convention this year will be in La Grande, hosted by The La Grande Sno-Drifters. This year's Convention will be February 7-11, 2023. I am extremely excited to travel to La Grande area to snowmobile and visit this incredibly beautiful area of our state. Please check our website for registration and motel information. (**Sign up early for a chance to win that Ski Doo.**)

I will continue my plan to attend club meetings at selected OSSA member clubs over the 2022-2023 season.

If you have any comments or concerns, please do not hesitate to reach out to me at dljordan14@gmail.com or call me at (541) 821-6570.

Thanks, and start thinking SNOW!

Dennis Jordan
President,
Oregon State Snowmobile Association



Hello Snowmobilers!

Shorter days and cooler nights mean one thing to a snowmobiler. Snow is on its way! Our club volunteers have been busy all summer stocking shelters with wood, trail maintenance, and groomer maintenance. Our club volunteers are the best and I can't stop singing praises of them.

OSSA has applied for two Recreational Trails Program (RTP) grants. One for a new Tucker Sno-Cat® for the Harney County Snowmobile Club (Burns area). Another for two Safety Trailers. Last year we received an RTP grant for 24 "Are You Beeping?" Avalanche Beacon Checker Signs. These signs will be installed in avalanche prone riding areas throughout the state. Installation and maintenance will be done by the local club volunteers.

We have purchased three new cats this season. A new Tucker Sno-Cat® was purchased through an RTP grant for the Tollgate Trailfindersclub. A new Pisten Bully cat will go to the Walker Rim Riders (Crescent area) and another Pisten Bully cat will go to Moon Country Snowbusters (Bend area). Grant County Snowballers (John Day area) and Burnt River Snowmobile Club (Unity area) are putting the finishing touches on their new groomer barns that were installed this last season. We are working to get electricity to the Hi Desert Stormtroopers (Lakeview area) groomer barn. We are also working to replace the floor in the Klamath Basin Snowdrifters groomer barn. Columbia Gorge Powersledgers are working on a groomer barn expansion. A new fuel tank for the Mt Jefferson Snowmobile Club groomer barn is scheduled to be installed before the snow flies.

Bob Keller was to receive the International Groomer of the Year Award at the International Hall of Fame in Eagle River, Wisconsin this month. Due to health issues, Bob was not able to attend. We will have a ceremony for Bob in La Pine, Oregon that will be hosted by his home club, La Pine Lodgepole Dodgers and OSSA. The date has not been set.

Our clubs have begun their annual membership drive. We encourage everyone to join their local snowmobile club which includes membership to OSSA. If you ride in other areas of the state, consider joining clubs in those areas.

Copy this link into your browser for more information about OSSA club membership.
<https://www.oregonsnow.org/membership/>

Lisa Mahoney
OSSA Executive Director

OSSA STORE ALERT

GET YOUR OSSA YETI RAMBLER TRAVEL MUG!!

Copy the link below and paste in your browser search window to order yours today.

<https://oregonsnowmobileassociation.growthzoneapp.com/store/>



OSSA CLUB NEWS

Monthly club report submission
Due Dates for publication season 2022-23

Email to: gscott@oregonsnow.org

Questions please call Gordon at 503-936-9592

OCTOBER NEWS due September 26th

NOVEMBER NEWS due October 24th

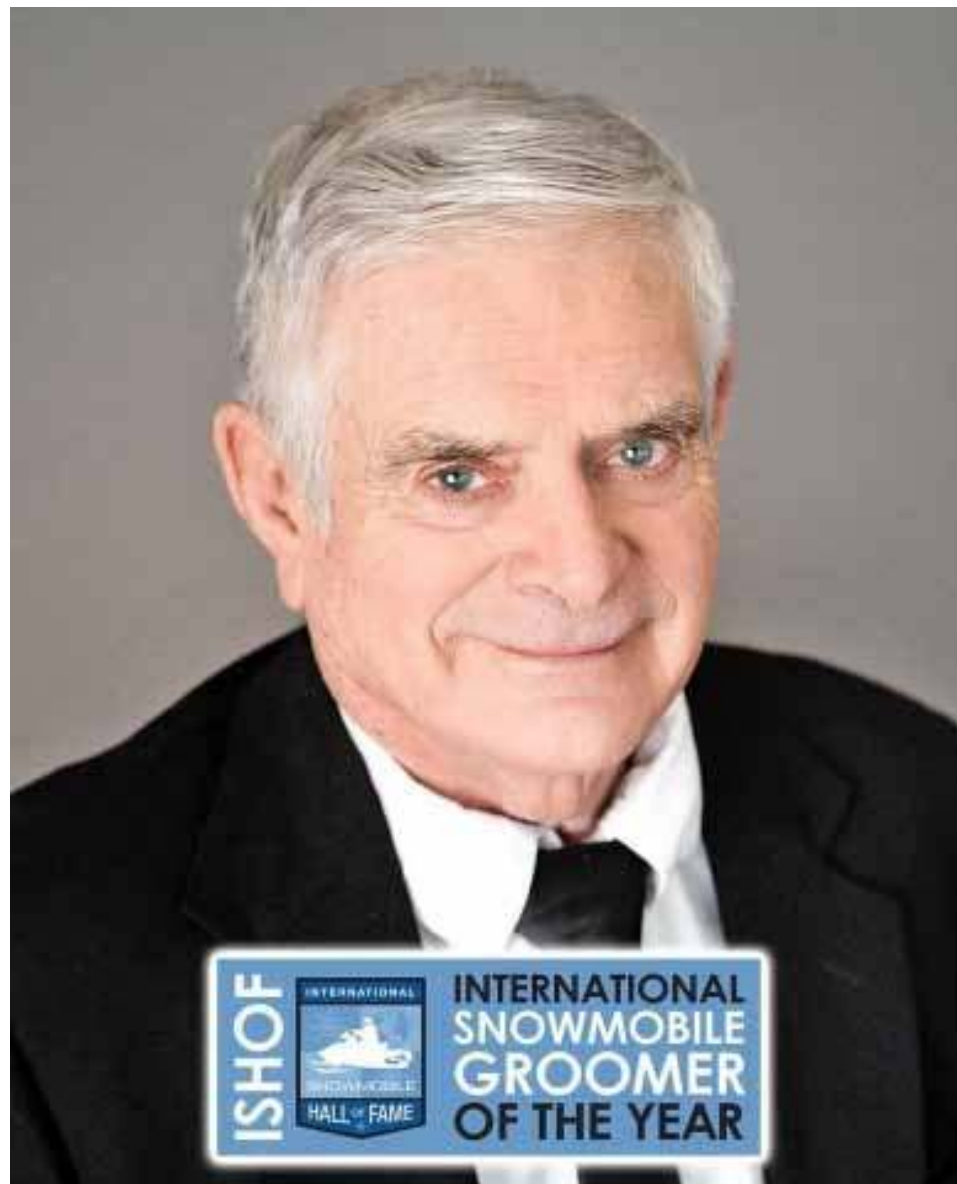
DECEMBER NEWS due November 21st

JANUARY NEWS due December 19th

FEBRUARY NEWS due January 23rd

MARCH NEWS due February 20th

APRIL NEWS due March 20th



The International Snowmobile Hall of Fame is honored to Officially announce, Bob Keller from La Pine, Oregon as the 2022 International Groomer of the Year

Sponsored by Arrowhead Groomers, Track Inc., Pisten Bully, Prinoth Ltd., and SnoBoss Groomers.

Over the past two decades Bob has volunteered countless hours grooming the 150+ miles of trails in the Newberry National Volcanic Monument located in Deschutes National Forest in Oregon. Bob has worked closely with the park service establishing and managing the snowmobile trail system in and around the Newberry Crater. Bob schedules, grooms, manages and maintains a grooming program that ensures his trails are free from hazards and always freshly groomed for club rides and key community events. Bob's track record of safety and readiness has been unmatched over the years and has resulted in a trail riding experience that thousands of snowmobile riders enjoy every winter. Bob always makes a point to spend ample time with his groomer operators to provide positive feedback. He and his team keep the trails in outstanding condition throughout the winter season. It has been this way consistently for close to two decades. His humble expertise and outstanding people skills have resulted in numerous groomer operators being trained on various grooming equipment. Bob's ability to instruct while building driver confidence is among his best attributes. Bob and his team are always willing to do whatever it takes to keep the trails in the Newberry National Volcanic Monument ready for snowmobilers' riding pleasure seven days a week. It is this unwavering dedication that makes Bob Keller an excellent choice for the 2022 International Snowmobile Groomer of the Year Award.

https://www.ishof.com/award_groomer.html





EFFORTLESSLY AGILE. ENDLESSLY EXCITING.

When winter pushes your limits, push back with the new 2023 Summit Edge. Engineered with our new lighter, narrower REV Gen5 platform for maximum performance and effortless handling on steep and technical rides. Paired with the relentless power of a Rotax 850 E-TEC engine, the Edge will give you more goosebumps than a fierce mountain top wind.

DISCOVER MORE AT [SKI-DOO.COM](https://www.ski-doo.com)

THAT *ski-doo* FEELING

© 2022 Bombardier Recreational Products Inc. (BRP). All rights reserved. ®, TM and the BRP logo are trademarks of BRP or its affiliates. Products in the United States (U.S.) are distributed by BRP US Inc. Always ride responsibly and safely.

A BRP BRAND




NORTHWEST
POWERSPORTS
503-872-0000
[WWW.SK NORTHWEST.COM](https://www.sknorthwest.com)

OSSA
CLUB OF THE YEAR 2022

Dan Riblett
SNOWMOBILER
OF THE YEAR 2022



The Klamath Basin Snowdrifters is a non-profit snowmobile/grooming club responsible for grooming in the Lake of the Woods/Fish Lake/Hyatt Lake area. During the snow season the Clubs volunteer members keep **360 miles of designated trails** smooth, clear, and safe for all riders. Safety and fun are top priorities of the club. With a wide range of rider skill levels, anyone can find a comfortable riding group.



**Pelican
Butte
Summit**



**Stocking the
4-mile shelter**



**Kam
Nielsen
dropping
into
Pelican
Butte**



We were happy to have the OSSA President, Dennis Jordan, at our last club meeting. He informed us that the avalanche boards are nearly done. It is probably too late for this season, but they should be up by next season. He informed us that OSSA has over 1,300 family memberships. During this season, groomers across the state have groomed 26,000 miles as of the end of February. Our club has groomed about 2,100 miles this season, which is down slightly from 3,000 miles last season.

We are very pleased to report that our club reached 107 family memberships by the end of the season last year. We have plateaued at 102 paid memberships as of March 8th. Of the 102 family memberships, 87 joined the OSSA through our club. The other 15 memberships are people who joined other clubs first, and then joined our club as an additional club.



The joint Klamath Basin Snowdrifters/Chiloquin Ridge Riders banquet was held Saturday April 23rd at Trappers Inn and was catered by Melissa's Country Kitchen. Awards were given. Pictured from left to right- Jess and Caemen Buckley with their son, Jax, representing Black Bear Diner, Co-Sponsor of the year; Bill Kennedy, Longest Day Award, Ken Crutchfield, Most Groomed Miles in a Day award, Hap Brown, Snowmobiler of the Year, Mike DeSmit, President's Award, Monica and Dave Miller (kneeling) representing Dave's Motorsports, Co-Sponsor of the Year, and Monica Miller, Certificate of Appreciation for her years as Treasurer. Not pictured, Cliff McMillian and Kim Howard, representing Alder Creek Landscaping, Co-Sponsor of the Year, Mark Moore, Longest Day Award, and Jim Goossen, Most Miles Groomed in a Day.

Volunteer hours and miles Are Vital to OSSA

What is a snowmobile club volunteer?

By Lisa Mahoney, OSSA Executive Director

A snowmobile club volunteer is a special person who dedicates their time, energy, and sometimes money to benefit not only their snowmobile club but others. This person is involved, helpful, charitable, selfless and always humble. Much of the time, the public has no idea what our volunteers do. So, let us share just a few things that they do.

They voluntarily maintain over 31,500 miles of multi-use trail each year. These trails benefit not only snowmobilers but cross-country skiers, snow bikers, snow-shoers, and dog sledders. In the spring and fall, volunteers are busy cleaning trails and putting up trail markers to get ready for the next season. They cut wood and fill the shelters for all to use. They build bridges, shelters, re-roof existing grooming sheds, and do their own maintenance on their sno-cats. They voluntarily teach snowmobile safety classes and avalanche safety classes. They donate to charitable organizations such as Candlelighters, Wounded Warriors, Hospice, and Meals on Wheels just to name a few.

Our volunteers are the backbone of our organization. We could go on and on about all that they do. *So, we want to humbly thank each and every one of you for your hard work and dedication to our wonderful organization.*

Volunteer hours/miles = \$\$\$. More \$\$\$ = **the more we can provide for snowmobiling!**

Use this form to track your volunteer hours and miles. Please turn in the form monthly. You can mail to OSSA, PO Box 6255, Bend, OR 97708; email to lmahoney@oregonsnow.org; or fax to (458) 202-1193.


Thank you so much for all that you do for snowmobiling!
Sincerely, Lisa Mahoney OSSA Executive Director

VOLUNTEER HOURS REPORT											
Month:						Year					
Club Name			Club #			Submitted by:					
Volunteers Name	Date Worked	Miles Driven	Trail Work Hours	Trail Miles Worked	Shelter Maintenance/ Woodcutting	Charity Hours	Fund Raising	Meetings (USFS & Others)	Safety Programs	Groomer Maintenance	Other Activities (Identify)
*Pls indicate charity \$ amt											
*Please name charity											
TOTALS:											




VOLUNTEER



 **Wallowa County Gamblers Snowmobile Club**
 August 7 · 🌐

Got the cabin ready for season. Couldn't fit another piece of wood.
 Bring on the snow!!!



 **Wallowa County Gamblers Snowmobile Club**
 June 28 · 🌐

A thank you from Northern American Packgoat Association they ask me to share.....
 They also donated \$300 to the club. So thank you #NAPgA.

Thank you so much for allowing NAPA to use your warming hut for our Rendezvous at the Sno Park. It was very much appreciated by all who attended on such a chilly, damp weekend! Please accept our donation toward your club along with our thanks.

-NAPgA





MT. HOOD SNOWMOBILE CLUB

TJ Reilly • 503-804-2075 sdas88@aol.com
Mt Hood Snowmobile Club President



Mt. Hood Snowmobile Club was formed in August of 1967. Thirteen people met and expressed the idea of forming a club to bring together the people of this “new sport” of snowmobiling in Oregon. Articles of Incorporation were filled out, presented to the State and approved in December of 1967.

Mt. Hood Snowmobile Club has been instrumental in setting up several shelters in the snowmobile areas on Mt. Hood.

In the fall of 1972, four members of our Club journeyed to Bend, Oregon to meet with snowmobilers from other areas in Oregon to form a state snowmobile association. In time, this became the Oregon State Snowmobile Association. The State was divided into different areas with a representative in each area to bring their ideas and problems before the State Association.

Since 1978, MHSC has been grooming the trails around the designated snowmobile areas. As finances become available, more modern equipment is being used. The grooming committee now has use of a PistenBully 400 with a special grooming attachment that keeps approximately 400 miles of trails groomed in the Mt. Hood National Forest.

Mt. Hood Snowmobile Club considers snowmobiling to be a family sport. Our activities are geared to that idea.

The most enjoyable function on our calendar is the snowmobile rides we give to the children who have cancer. In doing this we started giving our donated money to the “Candlelighter Organization” a parent support group.

MHSC currently has approximately 100 members and are always looking for more. Thank you for your interest in MHSC. Ride safe and have fun.

We now have double doors instead of hanging plastic at our warming shelter!

A special THANK YOU to Chris Larsen for all his volunteer work to get this done. Also special thanks to all our supporting members as this was paid for with our club dues. Our shelter will stay a lot warmer now.



We had a very good snowmobile year 2021-22

Our club volunteer groomers groomed close to 3,000 miles and moved over 1,000 trees off of the trails this season.

Our volunteers have been busy this summer installing a new generator provided by OSSA for our Grooming Shed. In addition, we have been busy servicing our chain saws and other equipment for the upcoming snowmobile season.

Our first club meeting will be Tuesday October 4th. On Sunday

October 30th we will be hosting a groomer orientation at Skyline Sno-Park for any member that wishes to get involved with our grooming program.





International Snowmobile Day October 29, 2022

The snowmobile manufacturers are pleased to announce Snowmobile Day, happening October 29, 2022. Snowmobile Day is a day to celebrate the snowmobiling community and begin preparations for the upcoming season. Snowmobile clubs, local dealers, associations, and snowmobile groups are invited to participate.

Snowmobile Day is being patterned after the successful "Snöskoters Dag", held in Sweden for over 45 years. The celebration in Sweden started in the 1970s and expanded rapidly through the 1980s as snowmobiling in Sweden expanded. The success of the event is traced to creating a fun family party, with involvement from clubs, associations, media, dealers, and other industry stakeholders.

Snowmobile clubs are encouraged to begin the season with a party that might include games activities, and more. A "Show and shine" event featuring vintage and custom snowmobiles, towing and groomer vehicles could be another type of activity planned. Safety training, maintenance and winter check-ups for snowmobiles and trailers are other activities clubs and associations might hold during a Snowmobile Day celebration.

Snowmobile Day should be a fun, family festival type event, where BBQ, refreshments, music, and an open house can get snowmobilers excited for the upcoming season.

Snowmobile Clubs are encouraged to participate in the activities and serve food, coordinate special events, conduct safety classes, sell trail, riding permits, and registrations. This is a great opportunity for clubs and associations to increase membership and recruit volunteer for trail activities.

Snowmobile associations and clubs are encouraged to contact local Chambers of Commerce, Visitor and Convention Bureaus, and regional media to support and help with a local event.

Planning a Snowmobile Day celebration is a perfect opportunity to bring enthusiasts together in kicking off the season and enjoying the snowmobile family lifestyle.



**TUCKER
SNO-CAT®
CORPORATION**

Building Quality Since 1942.

No road too steep...

NO SNOW TOO DEEP.



SCAN THIS CODE

**Made in
the USA!**

**Call: 866-SNO-CAT1
or 541-779-3731
www.SNO-CAT.com**

*Experience the
4-Track Advantage!*



Sumpter Valley Blue Mountain Snowmobile Club

Find us on Facebook (<https://www.facebook.com/sumptersnowmobileclub>)
See upcoming events for a disclaimer

Sumpter valley blue mountain snowmobile club, PO Box 3, Sumpter Oregon.
We groom trails throughout the season and clear them in the summer.
Meeting once a month throughout the season, beginning Oct 15th.
We sponsor the Sumpter Poker Run each year, on President's Day Weekend.

Our Poker Run went very well even if we didn't have a lot of snow. Our top prize of \$800 winner was Jakob Elvrun with 5-2's and he also won \$75 with a F/H 7/K's with 4 high for the tie. The other winners you can find on our Facebook page (Sumpter Snowmobile Club). Our Member only drawing for \$150 went to RaNae Cameron. 50/50 drawing went to Roy Belveal with him getting \$715. We had a couple members of the club that donated an awesome Corn Hole Game that was auctioned off and brought \$1000 for the club. Shane Kanyid was the happy bidder of it.

We had a lot of awesome prizes for our raffle drawing given by businesses and individuals who donated them. We didn't have one last year due to the Covid situation, so it was really nice getting back to it. Please thank them for their generosity. We sold over 3000 raffle tickets and 355 Poker Hand cards.

The club would like to thank all the merchants and to the members and non members that helped with the stations and with the other activities that went along with preparing for the Poker Run and clean up after. If it wasn't for all their help, we wouldn't have enough people to put this on.



Crowd at Poker Run Ceremony



Girl drawing a cup



RaNae Cameron Winner of the Member Only Drawing



Marsha Demaris winner of Eric Church Tickets



Drawing for a cup



Winner of Corn Hole Game: Shane Kanyid



Poker Run Winners of 2022



Roy Belveal, Winner of the 50 50 Drawing



PROUD TO BE YOUR TRAIL GROOMING PARTNER IN OREGON



SCAN THIS CODE TO LEARN MORE!



REACH OUT TO YOUR LOCAL SALES REP

Don Summers:
don.summers@prinoth.com
Telephone: (541) 508-9241



Morrow County Grain Growers
350 Main Street
P.O. Box 367
Lexington, OR 97839

JUSTIN BAILEY
Polaris Sales and Finance
Cell: 541-256-0229
541-989-8221
1-800-452-7396
justinb@mcgg.net

Salem Hydraulics
"We Put The Power In Your Equipment"
Statewide Fast Service Calls to the Snow or the Field!
www.salem-hydraulics.com/
503.378.1832

OREGON STATE SNOWMOBILE ASSOCIATION
50th Anniversary 1972-2022
OSSA
www.OREGONSNOW.ORG
FREE PUBLICATION
SEASON 2022 - 23

OFFICIAL PUBLICATION OF THE OREGON STATE SNOWMOBILE ASSOCIATION



FULL COLOR

HIGH IMPACT

ADVERTISING

Monthly, October 2022 - April 2023

Thousands of Readers!

Ad Description	Ad Size	7 Full Season Prepaid Issue Rates	Single Issue
Business Card	2" x 3.5"	\$ 472.50 / \$ 67.50 per issue	\$ 75
1/4 page	4" x 5"	\$ 945.00 / \$135 per issue	\$150
1/2 page	8" x 10.25"	\$ 1,575.00 / \$225 per issue	\$250
Full Page	16.25" x 10.25"	\$ 2,362.50 / \$337.50 per issue	\$375



RECEIVE 10% DISCOUNT for SEASON prepaid ads

Discount applies to 7 prepaid season issues.

Deadline for this offer is September 30th, 2022

Payment can be made by VISA, MC, Zelle direct deposit, or check.

Provided Art needs to be emailed in .pdf, .png, or jpeg in high resolution format.

Email Art to: OregonSnowmobileNews@oregonsnow.org

Customer Service, Call / Text 503-936-9592 or gscott@oregonsnow.org

SPECIAL OFFER LOGO ONLY, Art size up to: 2" x 1.5" \$35 per issue

SPECIAL OFFER SUPER IMPACT FRONT PAGE AD

1/4 page - \$250 per issue Bcard size - \$125 per issue

*Special offer is a separate offer and does not apply to the 10% discount for prepaid season ads.

CHECK OUT YOUR OSSA STORE ONLINE AT THE OSSA WEBSITE!

<https://oregonsnowmobileassociation.growthzoneapp.com/store/>



Unisex - Black Heather Hoodie
w/OSSA Blue/Gold 50th
Anniversary

\$50.00 - \$57.50



Unisex - Black Heather Hoodie
w/OSSA 50th Anniversary

\$50.00 - \$57.50



Unisex - Jerzees Long Sleeve
Heather Grey Tee W/OSSA 50th
Anniversary

\$25.00 - \$30.00



Unisex - Jerzees Long Sleeve
Black Tee W/OSSA 50th
Anniversary

\$25.00 - \$30.00



Youth Hoody Sweatshirt - Grey
W/OSSA 50th Anniversary

\$35.00



Youth Hoody Sweatshirt - W/OSSA
Blue/Gold 50th Anniversary

\$35.00



Men's Sport-Tek 1/2 Zip Grey
W/OSSA 50th Anniversary

\$55.00 - \$63.00



Men's Sport-Tek 1/2 Zip Grey
W/OSSA Blue/Gold 50th
Anniversary

\$55.00 - \$63.00



Woman's Sport Tek 1/2 Zip
Pullover Grey W/50th Anniversary

\$55.00 - \$63.00



Woman's Sport Tek 1/2 Zip
Pullover Grey W/OSSA Blue/Gold
50th Anniversary

\$55.00 - \$63.00



20 oz Yeti Rambler Travel Mug

\$50.00



Yeti 20 oz Tumbler

\$50.00



OSSA 50th Anniversary Hat

\$10.00



Ask An Expert: Trail Grooming Tips & Tricks with Brian from PRINOTH

We had a chance to sit down with Brian Ainsworth from PRINOTH to talk about snowmobile trail grooming tips and tricks. PRINOTH is a manufacturer of a variety of trail grooming machines. If you are interested in learning more about PRINOTH or trail groomers, visit prinoth.com or call 603.267.7840.

Why do snowmobile trails get groomed?

To make them smooth for people to enjoy. You can't enjoy the sport unless you're comfortable.

It's important that riders allow time for the trails to set up after the groomers have done their job. This creates a fantastic concrete surface that lasts for many riders, not just the first few. Clubs spend a lot of money on their choice of snow grooming equipment so everyone can enjoy the sport. This is one good reason why you join a club and support their events.

What goes into grooming a trail?

It all starts with the cooperation from very generous land owners. Without them, we would have nothing. Before the snow falls there's a lot of preparation done by the clubs. There are a lot of volunteers that do groundwork, tree, limb, and rock removal, and general trail clearing. If you have a smooth base you'll have a smooth trail.

Then, with the cooperation of Mother Nature, we have snowmobile trails.

After there's snow, the clubs go out and start preparing the base by either rolling or packing. Heavy snow is preferred, but any snow is welcome. A heavy snow packs the best, so that's what we want first. Powder just gets pushed aside.

After you have a base, normal grooming takes place – most of the time with drags.

Let's talk about drags:

All drags have cutting bars, processing bars, and a pan in the back to process the snow. In the right temperatures, the drag will create heat that sets up the finished product – the trail you ride on. If temperatures cooperate, you'll have a nice firm, flat surface. Anything below 20 degrees is optimal. Drags are designed to be pulled between 6-8mph. Anything faster than that, you aren't letting the drag operate as designed.

When is the best time to groom a trail?

The clubs groom nightly when the temperatures drop and there's no traffic. It's also when you have the time to be out there and do the work.

What are tips you can give to someone who wants to get into grooming trails?

1. Join a club.
2. Be an ACTIVE volunteer (volunteering is VERY important). You need to show the club that you are there to be a member, not just a driver.
3. Ride and train with an experienced grooming operator.
4. Obey the laws of the club.

What would you say to riders to help them get the most out of a snowmobile season?

It all hinges on the responsibility of the snowmobiler to obey the club laws, signage and show appreciation for the landowners.

Stay in the trail, be responsible, don't drink & drive, and above all have fun! The ability for us to ride these trails is a privilege, so let's treat it like that.

It's a family sport full of volunteers. We all work together and it's vital that everyone respect and contribute to the sport through club membership, appreciation toward land owners, and participation in fundraising to keep it going strong for generations.

DON'T MISS A SINGLE EVENT. RENEW YOUR MEMBERSHIP TODAY!

REPRESENTATION ■ EDUCATION ■ COMMUNITY SERVICE ■ GROOMING ■ SOCIALIZING



SIGN UP NOW!

OSSA Membership

Become a general member online today at <http://oregonsnow.org/about/> Please also consider joining your local club to further help support our sport. (This is only for OSSA membership. Most club memberships automatically include a membership in OSSA. Be sure to check with your local club. Many of our members have memberships in several clubs. If you are a member of multiple clubs you would only pay OSSA dues one time.)

Use the online form at <http://oregonsnow.org/about/> to join OSSA only.

If you wish to join a local club, please contact your local club directly. Local club membership automatically includes a membership in OSSA. Thank you for your support!

Note: Many powersports dealers give discounts to OSSA Club members.

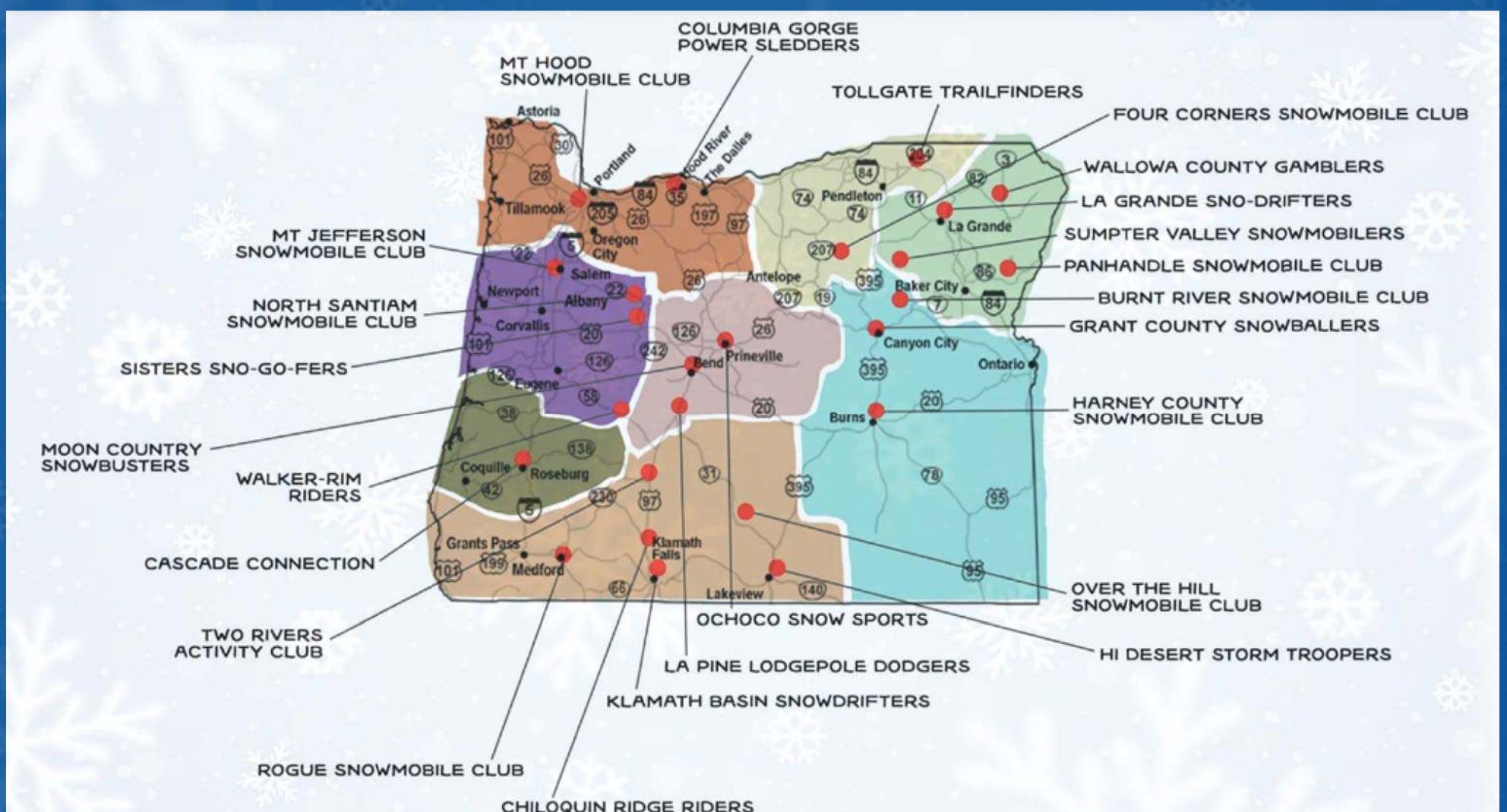
Some attributes of club membership include :

- * Cooperative enjoyment in club activities, rides and play days.
- * Assistance through club membership in formalizing legislation for snowmobiles.
- * Learning new areas to ride and familiarity with areas through joint rides.
- * Strength in state organization through local club organization and input.
- * Opportunity to gain knowledge of snowmobiling through club meeting speakers.
- * Obtaining a feeling of "Belonging" a common bond experience.
- * Meet new people and make new friends.
- * Promote and understand safe snowmobiling.
- * To protect and preserve the rights and freedoms to enjoy the sport of snowmobiling.
- * To help preserve and promote our natural resources.
- * Assist in search and rescue missions.
- * The ability to enjoy snowmobiling activities as a family and at a price reasonable for doing so.
- * Helping provide a trail groomer.
- * Helping to discourage bad snowmobiling practices.
- * Assistance in formulating and conducting youth driver education clinics.
- * Promote sanitation and non-littering in all areas used for snowmobiling.
- * Serve as a catalyst in service to state and federal agencies in providing new snowmobiling trails and parking facilities.
- * Club membership brings recognition to the member from both state and federal agencies and prestige in that recognition.

Our Volunteers spend hundreds of hours taking care of and grooming snowmobile trails.

A ski lift ticket for one person for one day is \$100 or more.
Say "Thank you" to our volunteers by joining your local club today.

It's only \$60 per year or less for your entire family. <https://oregonsnow.org/clubs/>





Online Payment links for OSSA and each club:

Oregon State Snowmobile Association: <https://members.oregonsnow.org/ap/Membership/Application/WpMwVbLY>

OSSA Legal Fund: <https://oregonsnowmobileassociation.growthzoneapp.com/ap/donate/49p84Zpv>

Mt Hood - <https://members.oregonsnow.org/ap/Membership/Application/aPoQedrV>

Columbia Gorge - <https://members.oregonsnow.org/ap/Membership/Application/mP7EDOrZ>

Mt. Jefferson - <https://members.oregonsnow.org/ap/Membership/Application/nplkgBrR>

North Santiam - <https://members.oregonsnow.org/ap/Membership/Application/QraZaqpW>

Ochoco Snow Sports - <https://members.oregonsnow.org/ap/Membership/Application/VLzBa5Ln>

La Pine Lodgepole Dodgers - <https://members.oregonsnow.org/ap/Membership/Application/nPeZewLa>

Walker Rim Riders - <https://members.oregonsnow.org/ap/Membership/Application/GrZR6Rr1>

Sisters Sno-Go-Fers - <https://members.oregonsnow.org/ap/Membership/Application/4pVeG4r8>

Moon Country Snowbusters - <https://members.oregonsnow.org/ap/Membership/Application/QLmdaBP4>

Two Rivers Activity Club - <https://members.oregonsnow.org/ap/Membership/Application/Dr6Vy0r4>

Klamath Basin Snowdrifters - <https://members.oregonsnow.org/ap/Membership/Application/OpR37RPd>

Rogue - <https://members.oregonsnow.org/ap/Membership/Application/Mp5l4org>

Chiloquin Ridge Riders - <https://members.oregonsnow.org/ap/Membership/Application/bLqW32pD>

Cascade Connection - <https://members.oregonsnow.org/ap/Membership/Application/mP7E7VrZ>

Harney County Snowmobile Club - <https://members.oregonsnow.org/ap/Membership/Application/yr4ID6rl>

Grant County Snowballers - <https://members.oregonsnow.org/ap/Membership/Application/DLyEAYLG>

Burnt River Snowmobile Club - <https://members.oregonsnow.org/ap/Membership/Application/qPYEkRP6>

Sumpter Valley Snowmobilers - <https://members.oregonsnow.org/ap/Membership/Application/nLv5A0Pk>

Hi Desert Storm Troopers - <https://members.oregonsnow.org/ap/Membership/Application/MrDgEqLx>

La Grande Sno Drifters - <https://members.oregonsnow.org/ap/Membership/Application/EPKVBOpw>

Panhandle Snowmobile Club - <https://members.oregonsnow.org/ap/Membership/Application/vrAnBNp2>

Wallowa County Gamblers - <https://members.oregonsnow.org/ap/Membership/Application/VPNa2Gp9>

Four Corners Snowmobile Club - <https://members.oregonsnow.org/ap/Membership/Application/zLEqG1L1>

Tollgate Trailfinders - <https://members.oregonsnow.org/ap/Membership/Application/kLxRzMp5>

Winter Wonderland



Resort Open 7 Days a Week
Year Round Now!

Winter Rates For Cabins & RV Sites Everyday
Snowmobiling - X Country Skiing
Snowshoeing & Ice Fishing
Overboard Pizza Shop Open *Everyday!*

Call Toll Free

About 40 Miles From

Klamath Falls, Ashland & Medford, Oregon

866-201-4194

www.LakeOfTheWoodsResort.com



Members Only

GIVEAWAY



SEE COVER PAGE OF THIS PUBLICATION FOR DETAILS !

OSSA AVALANCHE PROGRAM



OSSA Avalanche Program

In 2021 OSSA embarked on an effort to improve rider safety in the backcountry. The focus of the effort was to make training and education opportunities available to our club members. With the support of various Avalanche Schools, motorized Avalanche Instructors and our partners in industry, we have developed a five point program, which will be initiated by our Ambassadors, but ultimately managed at the club level to become a foundation for members of OSSA to begin their avalanche training.

The program includes the following initiatives:

- Develop regional avalanche ambassadors to assist clubs in standing up the program;
- Identify critical avalanche equipment and provide recommendations;
- Develop and provide avalanche training opportunities; and
- Expand the avalanche forecasting areas to cover the areas we ride.

We have spent most of this season creating and collecting program content as well as training our Ambassadors. The following are our Avalanche Ambassadors:

- Southern Oregon Ambassador is Suzanne Andersen.
- Northern Oregon Ambassador is Christian Sammons.
- Central Oregon Ambassador is Chuck Ehlert.
- Eastern Oregon we will be working closely with Victor and Kelly McNeil. They are presently working closely with local clubs and snowmobile industry partners in eastern Oregon. They not only have an established ambassador program with the local clubs and offer formal motorized avalanche training, but they are also responsible for avalanche forecasting in their area.

We will be putting finishing touches on our program over the summer with plans to roll it out to clubs beginning this fall. Our ambassadors will connect with the respective local clubs to introduce the training and eventually look for club members to take over the responsibility of training its new club members and providing a fresher each season to kick off another epic winter in the backcountry.

Look forward to working with everyone in the fall.

Cheers,
Chuck Ehlert

Third Annual Central Oregon

SLED SWAP

**SATURDAY
OCTOBER 22nd 9 AM TO 5 PM AT
PRO CALIBER MOTORSPORTS OF BEND**

**Sell what you don't need and
buy what you do need. Sleds,
Snowbikes, Parts, Jackets, Bibs, Pants,
Boots, Gloves, Trailers, Accessories**

**Two ways to sell ... sell it yourself for NO fee or consign it with the clubs
for 10% fee. Register your consignments at 9 AM and pick-up by 5 PM**

**KLIM
GIVE AWAYS**

**2023 SKI DOO
MODEL LINE-UP**

**SNOW PARK
PERMITS**

BURGERS & BRATS

**CLUB
MEMBERSHIPS**

RAFFLE PRIZES

Bring your vintage sleds down for show & shine !!



**KEEP
RIGHT**

**RIDE SINGLE FILE.
ANTICIPATE
ON-COMING
TRAFFIC.**

This message brought to you
by the American Council of
Snowmobile Associations
www.snowmobilers.org



OSSA CLUB WEB SITES

www.BurntRiverSnowmobileClub.com
www.CascadeConnection.org
www.ChiloquinRidgeRiders.com
www.columbiagorgepowersledders.com
www.FourCornersSnowmobileClub.com
www.GrantCountySnowballers.org
www.HarneyCountySnowmobileClub.com
www.HiDesertStormTroopers.com
www.kbsnowdrifters.org
www.lapinedodgerssnow.org
www.snodrifters.com
www.mcsnowbusters.wixsite.com/website

www.MtHoodSnowmobileClub.org
www.mtjefferson.org
www.NorthSantiamSnowmobileClub.com
www.OchocoSnowSports.com
www.PanhandleSnowmobileClub.com
www.roguesnowmobilers.com
www.sisterssnogofers.org
www.SumpterValleySnowmobileClub.com
www.tollgatetrailfinders.org
www.walkerrimriders.com
www.TwoRiversActivityClub.com
www.WallowaCountyGamblers.com

amazonsmile
You shop. Amazon gives.

Here is a way to support organized snowmobiling with absolutely no money out of your pocket. Amazon Smile.

We all buy from Amazon, some of us buy a lot and some of us buy a little. Some of us buy often and some of us buy occasionally. But reality is, we all buy from Amazon.

Sign into your Amazon account, navigate to smile.amazon.com and enter "American Council of Snowmobilers" as your charity of choice.



— washington state —
WSSA
snowmobile association

30th
Anniversary

2022 WASHINGTON SNOWMOBILE & POWER SPORTS EXPO AND SWAP MEET

WWW.WSSAEXPO.COM



*** Friday 3:00pm till 9:00pm Saturday 9:00am till 6:00pm ***

Washington State Fair Events Center, Puyallup, Washington

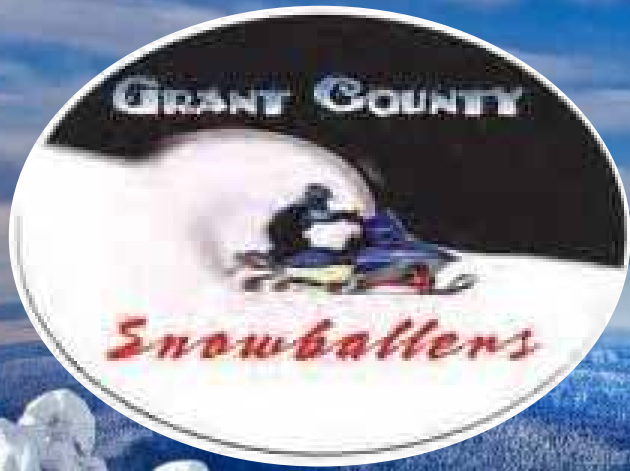
Admission \$10.00 • Children 12 and Under Free

Safe Rider Snowmobile Seminar for 12-16 year olds to earn a Snowmobile Safety Certificate
Call WA State Parks at 1-360-902-8684 to register or send e-mail to: winter@parks.wa.gov

Free Seminars on Friday and Saturday

EXPO: 1-509-220-1001 or expo@wssaexpo.com





Grant County Snowballers



Hello all!

Can't say we had an epic year of riding in winter 2021-22, but it is what it was. Our club last minute had to change the vintage ovals we host from Sumpter to Bear Valley due to low snow conditions. We had a good turnout, and want to thank the Haberly's and John Day Polaris for hosting our race and hauling the groomer, Robert Lawrence "the Flaggman" for putting on good show and keeping the race running smoothly, Fly Racing for added awards, Blue Mountain Hospital for their EMT and ambulance on standby, Bill Sproul and Garrett Carniglia for their tireless efforts in track preparation and race prep, our four corner flaggers and those members of our club that pitched in and helped. It always takes a small army to host an event, and the weather couldn't have been more perfect (except for more snow). That's a wrap! Enjoy your summer and pray for rain! We need the moisture.



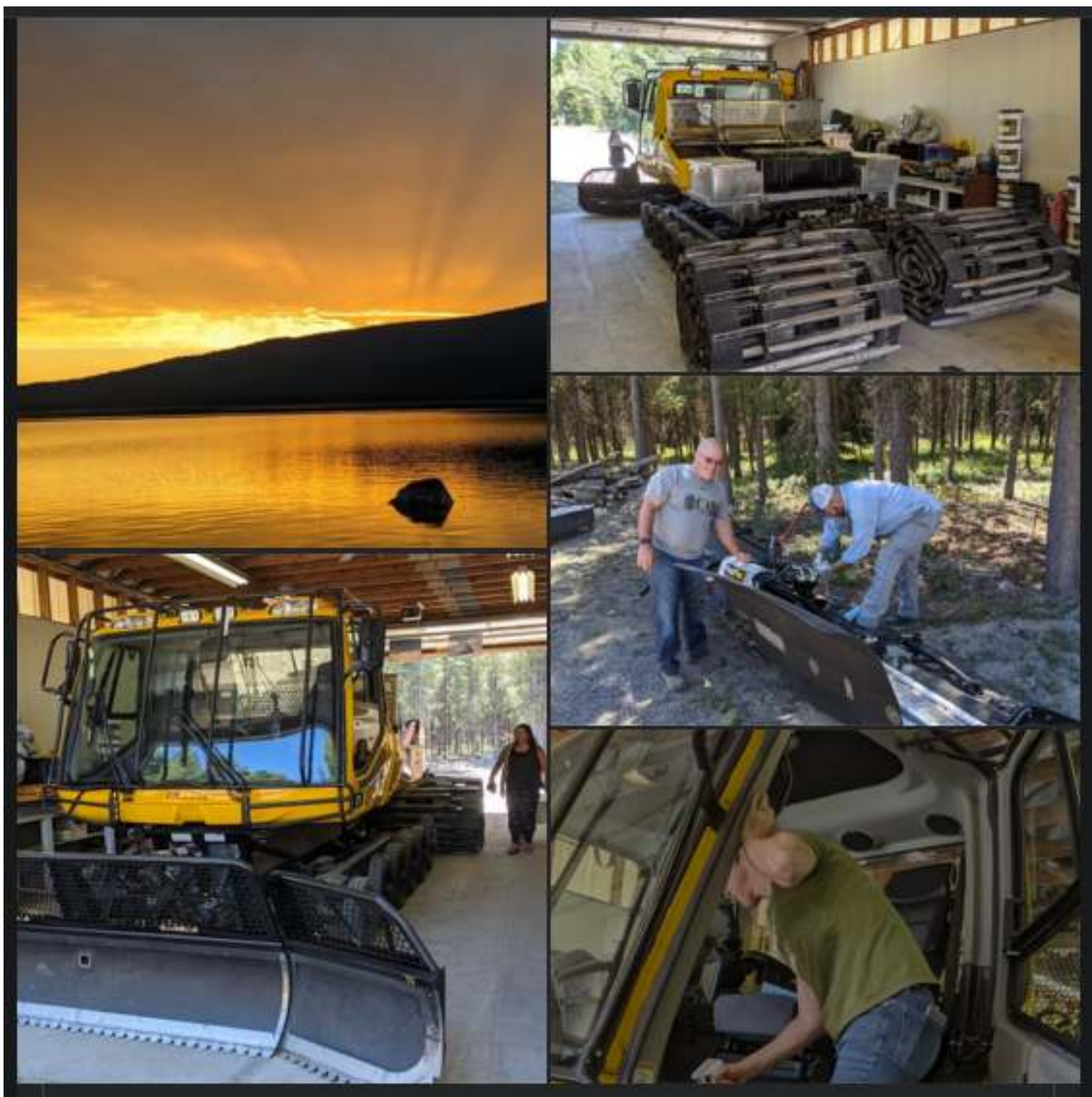


Walker Rim Riders Snowmobile Club

THE WEATHER IS CHANGING!!

The Walker Rim clubs grooming program (Crescent Lake Junction, Oregon) took this weekend to bust out more cat maintenance and start prepping for what quite possibly could be the BEST SEASON EVER coming up!! The crew went crazy from scrubbing the cat top to bottom, rebuilding tracks, hitting bearings and zerks and joints with grease, complete fluid changes and even had time to throw in shop maintenance! The amazing trails around the Crescent Lake area don't just happen on their own-We had five people working for 8 hours straight on just one of the prep days!

If you are a winter recreationalist of any type that enjoys using the amazing trails we have please consider joining the club ASAP! This year the Oregon State snowmobile association will be raffling off a new snowmobile, but there's a catch! You can't go out and just buy raffle tickets.... But you can earn them with your paid membership! The sooner you join the more tickets/chances you have to win the new snowmobile!





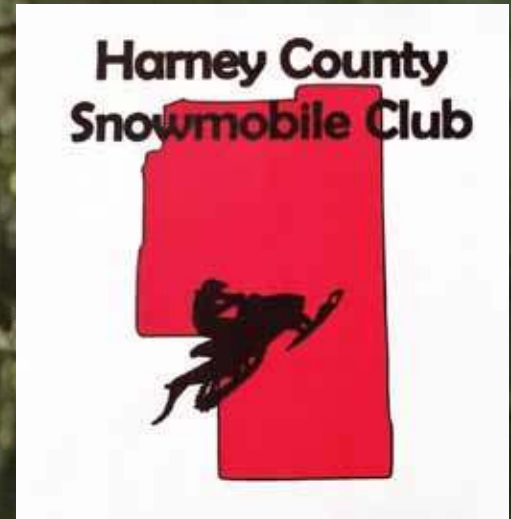
La Grande Sno-Drifters Snowmobile Club

Trail cleanup/maintenance 07-02-22. Thanks to the 5 members who showed up to work. You got a lot accomplished.



Big HUGE Shout out

to all of you Volunteers in July!



Members of the HCSC gathered and were able to mark hundreds of miles with diamonds and arrows. I can't thank you all enough for all your help. Same time next year to finish the couple hundred more miles to finish it!!





Celebrating 100 Years



Diamond Lake Resort



**Oregon's Favorite
Snowmobiling Destination!**

With Access to Crater Lake National Park, over 300 miles of groomed trails, & thousands of acres of National Forest Playgrounds. Motel Rooms, Guest Cabins, Store, Cocktail Lounge, Restaurant, & Gas Station
79 miles east of Roseburg, Oregon on Highway 138

43° 10' 38.07 N 122° 08' 19.27 W
Diamond Lake Resort is an equal opportunity service provider operating by Special Use Permit with the Umpqua National Forest

541-793-3333 • www.diamondlake.net



**La Grande
Sno Drifters
Snowmobile Club**



2023 OSSA CONVENTION Hosted by the La Grande Sno Drifters! Dates: February 7-11, 2023

Location:
National Guard Armory
404 12th St
La Grande, OR 97850

The La Grande Sno Drifters are working out the rest of the details. They should have a list of motels and other information available Soon.

MT JEFFERSON
SNOWMOBILE
CLUB



We wanted to reach out to our ODOT family at the Santiam Pass. These folks take care of the pass and our snow parks. With the shortage of CDL drivers they spent a lot of overtime to keep things open for us this winter.



Panhandle Snowmobile Club
48090 Cornucopia Hwy
Halfway, OR 97834

The morning was spent preparing for next winter. Thanks to everyone who came to split and stack wood at the SnoCat Shed. PC: Katy Bloom





Candlelighters.
For Children With Cancer

Our club has donated over \$100,000 to the local chapter of this organization over the last ten years. Candlelighters for Children with Cancer is a non-profit organization that supports families whose children have or have had cancer. They work through all the stages: discovery, diagnosis, treatment and remission. They also help with other issues, such as those that arise when a child passes. Through your donation the CANDLELIGHTERS are able to do many things. They can grant a child's last wish, take the children on a fun outing and give the children and their family hope and support as they go thru their treatment. The funds will help with travel expenses, (food, gas & lodging), for those children who must travel to OHSU in Portland or Doernbecker's Children's Hospital for treatment. Priority is given to requests pertaining directly to utility bills, rent, mortgage, phone bills, grocery needs and emergency car maintenance. Financial assistance is awarded to high school seniors or current college students to support their pursuit of a higher education who have previously been or are currently diagnosed with cancer. Through it all, the families are never charged a dime. These children are near and dear to our hearts. They come and help with our annual pie auction which is used as our annual fund raiser for the CANDLELIGHTERS. We also take them for snowmobile rides and a BBQ at our snow shelter near Crater Lake. They also join us at our annual summer camp out for fun, games and great food. It is donations such as yours that helps this organization do a little more for their kids. Your donation is tax deductible because CANDLELIGHTERS (501c3) and Rogue Snowmobilers (501c7) are registered as nonprofit organizations.

this organization still needs our help. There are only two organizations that provide donations to Southern Oregon Candlelighters each year. This organization relies on generous donations from our snowmobile club to continue to support families in desperate need each year.

<https://members.roguesnowmobilers.com/rogue-snowmobile-events/Details/candlelighters-fund-raiser-301317?sourceTypeId=Website>

Your donation today is a tax write-off donation. If you do not feel safe donating online, feel free to send us a check to our PO box.

Please write your check out to Rogue Snowmobilers.
PO Box 1423
Medford, OR 97501

Please leave a note with your check if you wish to receive a receipt to use for a tax write-off.

Thank you for your generosity and continued support!

Greg Gulrich
Vice President – Rogue Snowmobilers



Gary Lee Tift

March 12, 1942 - July 24, 2022

Gary was born to Edward and Eveline Tift in Valentine, Nebraska, youngest of five children and born during a severe snow storm. His family moved to Oregon in 1945. Gary grew up in Eugene and graduated from South Eugene High in 1960. Shortly thereafter he enlisted in the US Marines serving from 1960 - 1964 active and 1968 inactive. He spent some of his tour in Japan and Cuba during the Cuban missile crisis of 1963.

Gary met his wife Sharon (Rosser) cruising in his 1964 Chevelle down Tweedy Blvd in South Gate, California one January evening. They married July 3, 1964 and celebrated their 58th anniversary this year. In October 1964 they returned to Gary's hometown Eugene, Oregon. Gary worked for Farwest Steel as an ironworker which remained his trade throughout his career.

The early years of his marriage he did a great deal of hunting, fishing and waterskiing while his family grew. With the help of many friends and family he built a 2200 square foot house on 5 acres which his family enjoyed for 2 years before being transferred to Portland where he worked as a supervisor for Mercer Industries for 8 years. Transferring again in 1987 to Farwest Steel in Medford, Oregon as the shop superintendent. He worked there and retired some 20 years later. During his years in Medford he became involved with the Rogue Snowmobilers Club where he groomed trails at Thousand Springs snow park every Friday and rode his snowmobile all weekend. Upon retirement he and his wife traveled the west and midwest states spending winters in Arizona coming home in May until the new year had them heading south again. The most wonderful trip he took and loved was to Alaska in their motorhome for a month. It was a dream come true which his wife surprised him with on their 50th wedding anniversary.

Gary is survived by his wife Sharon, sons Rodney Tift and Michael Tift and daughter Amber Salvey. He was the proud grandfather of five, Christain Tift, Johnathan Tift, Justin Tift, Rylee Salvey, Corbin Salvey and one great grandchild, Lillian Tift. He is also survived by brother Norman Tift of Springfield, sisters Clarise Hookland of Eugene; Janice Reagor of Kelso, WA along with many nieces and nephews. His parents Edward and Eveline and sister Donna Stewart preceded him in death.

Gary's big personality, love for food, family and his side - kick Diva will be greatly missed.

Fond memories and expressions of sympathy may be shared at www.batemancarrollfunerals.com for the Tift family.



Snowmobiler Hand Signals

Approved ACSA Snowmobiling Hand Signals

Hand signals are easy to use and can be a very reliable way to communicate while riding a snowmobile. They can be vital to safe snowmobile riding, so always make clear, very deliberate signals with your left arm that can be seen by other drivers behind you or on approaching sleds.

Stop



Left arm is raised from the shoulder and extended straight up over the head with palm of hand flat. Note that some riders may indicate the STOP signal by extending their right arm instead of their left since the left hand is used for braking; therefore watch for and be prepared to stop for either signal.

Left Turn



Left arm extended straight out from the shoulder to point in the direction of the turn.

Right Turn



Bend your left arm at the elbow to shoulder height; with your hand pointing straight up and your palm flat, your arm should make a right angle.

Oncoming Sleds



Guide your snowmobile to the right while pointing to the right side of trail over your head, signaling to riders behind you that they should make sure they are riding on the right half of the trail and are yielding to on-coming traffic.

Slowing



Left arm extended out and down from the side of the body with a downward flapping motion of hand to signal warning or caution.

Sleds Following



Left arm is raised with elbow bent; with thumb pointing backward in hitchhiking motion, move arm forward to backward over your shoulder to advise approaching riders there are other sleds behind you in your group. Note that many riders may instead raise a number of spread fingers to indicate how many sleds are following in their group (if five or more, simply hold all five fingers up with fingers spread, or flash multiples of five). If traffic is heavy or if you're riding in the middle of a large group that is spaced fairly close together (next sled is clearly visible directly behind your sled), it is best to keep both hands on the handlebars and concentrate on driving your own snowmobile versus worrying about this signal since it should be quite obvious that other sleds are following.

Last Sled in Line



Left arm is raised at shoulder height, elbow bent and forearm vertical with hand clenched in a fist; important signal used to advise approaching riders that you are the last sled in your group.



Contact Us

American Council of Snowmobile Associations
 P.O. Box 1670
 Brighton, MI 48116
info@snowmobilers.org
 Phone: (517) 351-4362



Avalanche Education for Snowmobilers



Kolby Christensen was selected as the Trailfinders Snowmobiler of the Year!

Earlier this year we presented the new Rescue Boggan to the Umatilla County Sheriff's Office



Huge thanks to everyone that donated to the Umatilla Search and Rescue for the Rescue Boggan Fund. High Fives all around to the anonymous donors that helped us reach our goal to fund this project. Sergeant Dwight Johnson from Umatilla County Sheriff's office managed the assembly once it arrived from Canada recently.

This thing could be really fun to ride in ... unless you really need a ride in it. It will be located at one of the TTF facilities for use by Umatilla Search and Rescue, Union County Search and Rescue and the Union and Umatilla County Sheriff's departments.



Won't be long folks

Powderchasers is at Powder River Pass, WY. • Follow

6d · Sundance, Wyoming · 🌐

Today! Northern Wyoming ❄️. Snow 🌨️ was noted from the Big Horns of Wyoming and Montana extending into Canada 🍁 in the past 24 hours. There is even some pow on the snow cams. It's happening! 🏂🌨️🌨️ #snow #powderchasers #pow #montana #wyoming #tirerack #forecast #winteriscoming



Our new "Are You Beeping" signs were delivered

SNOWMOBILING DO'S & DON'TS

SNOWMOBILING DO'S

- ◆ Know the local hazards and forecasted weather conditions.
- ◆ Understand the importance of protective equipment and proper clothing while riding a snowmobile.
- ◆ Be alert and constantly scan the trail or riding area for other snowmobiles, trail users, and hazards.
- ◆ Ride defensively, be courteous, and use common sense.
- ◆ Follow the rules of the road and abide by all trail signs.
- ◆ Steer clear of restricted areas and respect environmentally sensitive areas.
- ◆ Know the operational characteristics of the snowmobile, along with its capacities and limitations: vehicle's range based upon normal fuel capacity and consumption, stopping ability/distance, maneuverability/steering capability, ability in deep snow, ability on steep side slopes, etc.
- ◆ Respect the rights of all other winter recreationists.
- ◆ Obey posted speed limits.
- ◆ Know the assumed risks and potential consequences of careless or reckless behavior while riding a snowmobile, including the potential for fines or injury.

SNOWMOBILING DON'TS

- ◆ Do not operate at high speeds, especially when near houses, buildings, livestock, wildlife, trailheads, or other recreationists.
- ◆ Do not use alcohol or drugs.
- ◆ Do not engage in reckless, careless, or inappropriate behavior.
- ◆ Do not overload a snowmobile or ride double unless the snowmobile is designed for 2 passengers.
- ◆ Do not get too close to other snowmobiles or other recreationists.
- ◆ Do not operate the snowmobile in areas with limited snow cover or on bare ground.
- ◆ Do not disturb wildlife or livestock.
- ◆ Do not ignore sudden changes in weather conditions.
- ◆ Do not disobey local, state/provincial, or federal snowmobile rules, regulations, and policies.
- ◆ Do not allow the snowmobile rental unit to be operated by anyone who has not completed the required rental orientation, training, and rental agreement documentation.
- ◆ Do not disobey rental company guidelines, instructions, or policies.



Oregon State Snowmobile Association

Snowmobile Buyers Guide

Whether you are buying a new or used snowmobile, our goal is to help you purchase the snowmobile that will give you the most value for your dollar. We want you to not only make the best purchase possible, but also have the best snowmobile experience with your purchase.

Snowmobiles have been around for almost 100 years. The technology of snowmobiles gets better every year. Basically, the newer the better.

Safety

The #1 rule of snowmobiling is NEVER RIDE ALONE!

For more safety info see <http://www.oregonsnow.org/tips.aspx>

Reasons to buy a snowmobile:

Snowmobile riding season usually takes place November through April. That's 6 months worth of riding fun!

- You can join a local snowmobile club and meet new friends.
- You don't ever have to buy a lift ticket to snowmobile!
- Unlike snow skiing, you won't get cold waiting for or sitting on a chair lift.
- Snowmobiles have windshields, heated handgrips and heat for your feet to keep you warm.
- Snowmobiling is a very safe family sport. Anyone from young to old, athletic to handicapped can ride a snowmobile.
- Snowmobilers care about our environment. Snowmobilers leave no trace.
- Do you get depressed in the winter? Snowmobilers always have a smile on their face when they are snowmobiling! The scenery is spectacular.

Should I buy NEW or USED?

Obviously a new snowmobile would be great, but not everyone can justify a new snowmobile. If you don't want to invest in a new snowmobile here are some tips on purchasing a used snowmobile.

- Because you're going to depend on your snowmobile for reliable, safe enjoyment, the service history is a top priority when choosing the right sled. Be sure you know it was taken care of properly
- If you don't know the person you are buying it from, take it to your local dealer to have it inspected before purchasing. Just like an automobile, snowmobiles need repair and maintenance to be reliable. It's very possible to buy a used snowmobile for \$2,000 only to find out that it needs \$3,000 worth of repairs.
- How many miles does it have? At 10,000 miles, most snowmobiles are basically worn out (similar to an automobile with 200,000 miles).
- Is the odometer correct? Odometers can easily be tampered with or replaced on snowmobiles. For this reason, if you don't know the seller it's especially important to have it inspected at your local dealer.
- Nada Guides can give you used snowmobile values, but remember the ultimate guide to a snowmobile's value is what else can you buy for the same amount of money. Older snowmobiles in good condition with lower mileage tend to sell for more than book value.
- New or Used, any snowmobile you buy will make you smile!

Should I buy a 2 Stroke or 4 Stroke?

4 stroke engines tend to be more reliable, get better gas mileage and last longer. They are particularly popular in areas where people use them to commute to work. As a general rule, 2 Stroke snowmobiles tend to be more popular in the Pacific Northwest. You also never have to change the oil in a 2 Stroke, although you do have to add oil every time you fill it with gas. Most of the snowmobiles for sale in the Pacific Northwest are 2 Stroke. 4 Stroke or 2 Stroke, any snowmobile you buy will make you smile!



Do I need a snowmobile with reverse gear?

Not all snowmobiles come with a reverse gear. If you don't have a reverse gear you will need a greater turning radius or you will be lifting the back of your snowmobile to turn around. If you have weak upper body strength or a bad back, make sure you buy a snowmobile with reverse. Reverse or No Reverse, any snowmobile you buy will make you smile!

Do I need a snowmobile with electric start?

Pro-riders normally don't ride snowmobiles with electric start because the starter and battery add a small amount of weight to the snowmobile. Most everyday snowmobilers prefer having a snowmobile with electric start. If you have weak upper body strength or a bad back, make sure you buy a snowmobile with electric start. This is especially important on any snowmobile with over 600cc. Pull start or electric start, any snowmobile you buy will make you smile!

Air cooled or water cooled?

Almost all snowmobiles used to be air cooled. They have a belt driven fan that cools the engine. Snowmobile manufacturers later developed water cooled engines when they wanted to increase the horsepower. Some of the manufacturers still make air cooled snowmobiles today. These are great entry level snowmobiles as they tend to be lighter, have less horsepower and also cost a lot less. Air cooled snowmobiles are highly recommended for young people who are just learning to snowmobile. Air cooled or water cooled, any snowmobile you buy will make you smile!

How long of a track do I need?

121, 136, 145, 153, 154, 162, 163, and 172 are some of the common track sizes

As a general rule the longer the snowmobile the less likely you are to get stuck in deep snow. Also, the longer the snowmobile, the harder it will be to maneuver especially if you are a beginner or don't have a lot of upper body strength. Ski Doo makes the 172 snowmobile and it is extremely long. If you are going to go off a groomed trail into the powder a 145 to 154 length is normally preferred for a beginner. Short track or long track, any snowmobile you buy will make you smile!

What type of snowmobile do I want?

The most common types are touring, trail, crossover, and mountain snowmobiles. You will want to purchase the type of snowmobile designed for the type of riding you plan on doing. All of these types can be used for beginners.

- Touring snowmobiles are designed for 2 riders. They are a lot heavier and are not recommended for off trail use as they will easily get stuck in deep snow.
- Trail snowmobiles are designed for groomed trails. They usually have shorter track lengths and a wider ski stance which make them more stable going around corners than the crossover and mountain snowmobiles.
- Crossover snowmobiles are designed to be good on trails and on the mountain. They also have a softer and more comfortable ride than mountain snowmobiles.
- Mountain snowmobiles are designed for deep powder and are least likely to get stuck in deep snow, but because of their longer tracks and narrower ski stance they are slightly more difficult to handle on groomed trails.

Touring, Trail, Crossover or Mountain, any snowmobile you buy will make your smile!



How big of an engine do I need?

When it comes to snowmobiling bigger is not always better, especially if you are new to the sport. Here are some general rules to consider about engine size and horsepower:

- The larger the engine the more the snowmobile weighs. The more your snowmobile weighs the easier it is to get stuck if you are a beginner.
- Less horsepower means longer engine life and less maintenance.
- Less horsepower is a lot safer and better when you are learning to ride.
- Less horsepower equals better fuel economy

During the last 10 years most snowmobiles were either 600cc or 800cc. Many new riders have had minor accidents with 800cc snowmobiles simply because of the extra horsepower. Most experienced snowmobilers don't let their inexperienced friends ride their 800cc snowmobile for this reason. Most 600cc snowmobiles also cost less than most 800cc snowmobiles. Small engine or big engine, any snowmobile you buy will make you smile!

What brand of snowmobile is the best?

If you join your local snowmobile club, this will be a never-ending topic of discussion, kidding and laughter! Arctic Cat, Polaris, Ski Doo and Yamaha are the current snowmobile manufacturers.

- Every piece of machinery or equipment can break down and will need proper maintenance. Having a dealer close to you is a huge plus when you need parts or repair for your snowmobile.
- All 4 brands currently make really good snowmobiles. The differences between them are generally very slight and unless you are a pro-rider you will most likely not be able to tell the difference.
- Even among the pro-riders the differences in the brands tend to be more of a personal preference than anything.

Arctic Cat, Polaris, Ski Doo or Yamaha, any snowmobile you buy will make you smile!

Important things to consider:

- Join your local snowmobile club to optimize your snowmobile experience and learn how to ride like a pro.
- If you don't have a valid Drivers License you will need a Snowmobile Operators Permit to operate a snowmobile in Oregon. To get a permit you will need to take a class sponsored by your local snowmobile club or Oregon State Snowmobile Association. If your child is old enough to read and comprehend they can usually qualify for a Snowmobile Operators Permit.
- Helmets are not required for snowmobiles in Oregon but you will rarely see anyone without a helmet. Helmets not only protect your head, but also help keep you warm.
- Snowmobile trail maps are available from your local snowmobile club and the Forest Service.
- Insurance is not required but is highly recommended. Full coverage is relatively inexpensive and will help to protect your investment. Even if you don't want full coverage for your snowmobile, liability insurance is a must!
- Water cooled snowmobiles can overheat if you are operating at very slow speeds or on hard packed snow or ice. Overheating will destroy your snowmobile. Be sure your snowmobile has ice scratchers and learn how to use them.
- Still have questions? Come to our next club meeting (you don't have to be a member to attend) and ask a question and enjoy all the answers you get from all the "experts" in our club. It's fun, possibly hilarious, and you won't regret it!

Finally, your local snowmobile club spends countless volunteer hours maintaining and grooming the snowmobile trails with equipment and funding provided by the Oregon State Snowmobile Association. Membership in most clubs is usually \$60 a year or less for your whole family and includes a \$35 membership in the Oregon State Snowmobile Association. Volunteering is not required to be a member, but you can still show your support by joining today. You'll be glad you did!

For a list of local snowmobile clubs go to www.OregonSnow.org

YOUTH OPERATORS NEED SAFETY TRAINING

KEEP THEM SAFE.
GET THEM TRAINED.

This message brought to you by the American Council of Snowmobile Associations
www.snowmobilers.org





ARE YOU NEW TO SNOWMOBILING ?
 DO YOU WANT TO LEARN HOW TO RIDE SAFELY ?
 DO YOU WANT YOUR KIDS UNDER AGE 16
 TO BE ABLE TO RIDE LEGALLY ?

Oregon Snowmobile Law says:

ORS 821.150 drivers license or permit required. **Class D Fine up to \$250**

**We can CERTIFY kids 16 and under
 without a driver's license.**

The OSSA Safety Program

Below is a list of current state approved snowmobile safety trainers.

Please contact your local trainer to get your kids 16 or younger without a drivers license trained and obtain their snowmobile safety certificate now.

NAME	LOCATION	PHONE	EMAIL
TJ Reilly	Portland	503-804-2075	treilly@oregonsnow.org
Brent Younker	Boring Or	503-695-2911	b_totalrental@yahoo.com
Randy James	Enterprise	541-426-3854	
Dennis Jordan	Eagle Point	541-826-6326	Djordan@oregonsnow.org
Lyle Klenski	John Day	541-620-1324	
David Miller	Klamath Falls	541-884-2423	DavesATVrepair@gmail.com
Glenn Shirek	Roseburg	541-673-3787	
John Vogel	Hood River	541-386-5584	Jvogel@oregonsnow.org
Maria Sammons	Salem	503-569-5552	cm97383@gmail.com





“Rules of the Road” for Snowmobilers

Do not follow closely behind trail groomers: It takes about one hour after grooming for the snow surface to properly “set up”.

Always ride in a straight line on groomed trails: Spinning and sliding around leaves ruts and soft spots in trails — play areas are provided for these activities.

Always ride on the right hand side of trails: Especially on narrow trails and around blind curves.

Use hand signals for slowing, stopping or turning off of trails: For your own safety and the safety of others on the trail.

Adjust speed to visibility: You should be able to stop short of any obstruction or emergency within your range of eyesight.

Do not stop in the middle of a trail: Others may not see you in time to avoid a collision. If you must stop — pull to the right edge of the trail.

Always use your headlights: Your headlight must be on at all times.

Do not use drugs or alcohol: Drunk driving laws apply the same as they do on the highway.

Do not go out alone: Always ride in pairs or groups and inform someone where you will be riding and the estimated time of your return.

Ride cautiously in Sno-Parks, near lodges and crossing highways: 5 MPH speed limit in snow park. Obstacles and pedestrians can emerge very suddenly in congested areas.

Avoid “showing off” near Sno-Parks and lodges: You are most likely to be observed by opponents to motorized recreation in these areas and the image you project is very important to the future of your sport.

Look out for cross-country skiers, sled dog teams, ATV’s and groomers that may be on the trails at any time: Slow to 10 MPH, pass cautiously and make the effort to be friendly and courteous.

Avoid the use of loud mufflers: Noise projects a very bad image of motorized recreation.

Reduce the noise to a minimum between 10:00pm and 6:00am in the Sno-parks: These parks are used by all types of recreationists – not just snowmobilers.

Always dress appropriately for adverse weather: Helmets are required at all times. Base temperature at 30° travelling at 30 MPH, the wind chill factor is 0°. At 60 MPH the wind chill factor is -20°.

Always be prepared: Carry extra spark plugs, belts and tools. Carry drinking water, snacks, extra socks, gloves, waterproof matches, space blanket and compass.

Know the area in which you are riding: Acquire a trail map from the local forest service or snowmobile club. Even better, join the local snowmobile club and don’t hesitate to ask questions.

Observe and comply with posted areas: Just one set of tracks in the wilderness can last until the next snowfall and leave a telltale sign for opponents to motorized sports to pinpoint for arguments for land closures.

Be aware of snow depth: Do not ride on muddy trails. Avoid damaging soil or vegetation, but preserve it for others to enjoy. Leave no trace.

Avalanche: There are a few slopes in our area that have potential for sliding. When in doubt – avoid questionable slopes.

Licensing & Permits: Anyone operating a snowmobile on public land is required to carry a valid driver’s license or snowmobile permit.



Pre-Season Snowmobile Check List

When the leaves start to turn to red and gold - it's a good time to drag out your sled and blow off the dust. Fall is a good time for maintenance - you can take your time to ensure you covered everything. Once the snow starts to fly you'll be ready to go. Check with your operators manual for special instructions regarding adjustments, lubrication, follow all safety suggestions.

Below is a simple check list to look over prior to starting the season:

- #1 **BRAKES** Check proper setting, free operation, and look for worn brakes.
- #2 **CLUTCH** Check lubrication
- #3 **CHAIN** Check lubrication and examine chain tension
- #4 **TRACK** Examine for broken cleats, loose or torn drive holes, and ply separation. Check alignment.
- #5 **HYFAXES** Check for wear or damage – replace if necessary.
- #6 **SKIS** Check alignment and examine for loose weld joints, or loose or worn out wear rods.
- #7 **IGNITION** Check sparks plugs, carburetor-fuel, replacement of fuel filter and check fittings.
- #8 **DRIVE BELT** Check for wear and cracks. Measure old belt and compare to specifications.
- #9 **LIGHTS** Replace burned out bulbs, apply brakes and check stoplights.
- #10 **SPARE PARTS/TOOLS** Pack lights bulbs, spare belt, tools (pliers, adjustable wrench, screwdrivers) and starter pull rope.
- #11 **WHEELS** Check wheel condition and lubrication, axel wheels and bearings. Look for loose nuts and bolts, broken welds and springs.

• Your Trailer Should be Ready Too

- #1 Make sure the tires are in good shape (check the spare also), and wheel bearings are greased.
- #2 Check all the lights and connections.
- #3 Carry a few extra bulbs and parts to be safe.

• Extra Things to Pack

Take your owners manual, emergency survival kit, siphon hose, duct tape, tow rope, extra bogie wheel.

• Then get out there and **RIDE!!!**

Polaris Issues Stop Ride / Stop Sale for Model Year 2021-2023 MATRYX, 2015-2022 AXYS, and select Model Year 2013-2014 Trail Performance (Pro-Ride) snowmobiles

Polaris has determined that with degraded fuel and especially after extended storage, Model Year 2021-2023 MATRYX, 2015-2022 AXYS, and select Model Year 2013-2014 Trail Performance (Pro-Ride) snowmobiles may pose a risk of fire due to electrostatic discharge (ESD) inside the fuel tank. Under specific conditions, vapors may be ignited inside the fuel tank, posing a potential injury hazard to consumers.

Number of affected vehicles: Around 230,000 units globally

Number of incidents: Polaris has identified 30 reports of fuel tank ruptures, including 16 incidents of fire and one report of injury.

Consumers should immediately stop using the impacted units. Polaris is currently evaluating a comprehensive action plan to correct this concern at no cost to consumers and will contact affected consumers once determined. **DO NOT** attempt any repairs yourself. If a rider needs to start their snowmobile, they must make sure the fuel tank is full and, if it is not, then they need to add fresh gasoline to fill the tank.

Polaris is notifying dealers and contacting registered owners directly. Polaris has reported this matter to the Consumer Product Safety Commission.

To search off-road recalls by model or vehicle identification number (VIN) to see if your unit is affected by any recalls, visit the Off-Road Safety Recalls page or call Polaris at 800-765-2747.

Explore Oregon's Other "Crater"

Newberry National Volcanic Monument

A snowmobile with a sled is shown on a snowy mountain slope at dusk. The snowmobile has its headlights on, and the sled is loaded with gear. The background shows a sunset over a forest of evergreen trees.

La Pine

The Heart of Newberry Country

LA PINE LODGEPOLE DODGERS